

Recombinant Cardiostrophin 1 (CT1)

Catalog No: tcup2039



Available Sizes

Size: 10ug

Size: 50ug

Size: 200ug



Specifications

Application:

Positive Control; Immunogen; SDS-PAGE; WB.

Species:

Rattus norvegicus (Rat)

Source:

E.coli

Purity / Grade:

≥ 92%

Amino Acids:

Met1~Ala203

SwissProt:

Q63086

Predicted Molecular Weight:

25.3kDa

Observed Molecular Weight:

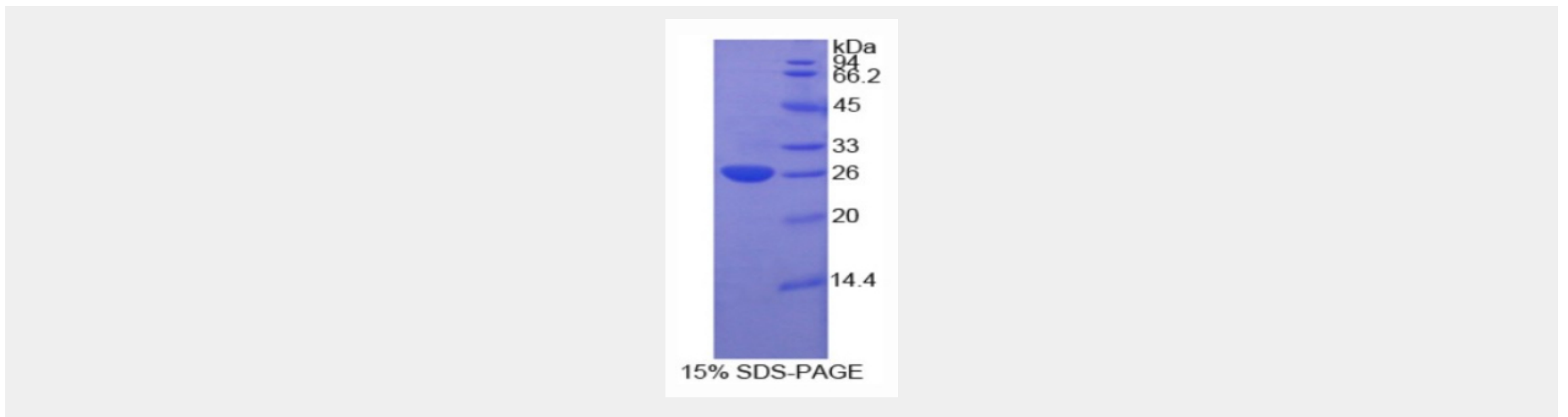
25.3kDa

Tags:

two N-terminal tags, His tag and T7 tag

Product Description

Prokaryotic expression



All products are for RESEARCH USE ONLY. Not for diagnostic & therapeutic purposes!