

Recombinant Lactoferrin (LTF)

Catalog No: **tcup1952**



Available Sizes

Size: 10ug

Size: 50ug

Size: 200ug



Specifications

Application:

Positive Control; Immunogen; SDS-PAGE; WB.

Species:

Canis familiaris; Canine (Dog)

Source:

E.coli

Purity / Grade:

≥ 95%

Amino Acids:

Cys28~Lys351

Predicted Molecular Weight:

41.1kDa

Observed Molecular Weight:

41.1kDa

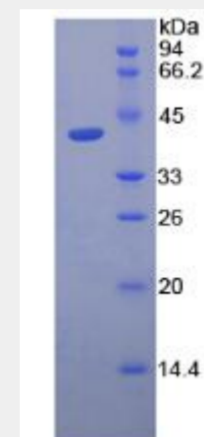
Tags:

two N-terminal Tags, His-tag and S-tag

Product Description

Prokaryotic expression

```
CTT SKAEAKKCSK FQVNMKKVGG
PIVSCTRKAS RQECIQAIKA NKADAVTLDG GLVFEAGLEP NKLRPIAAEV
YGTQTKQQIH YYAVAIKKG TNFQLNQLQG VRSCHTGLGR SAGWNIPIGT
LRPFLNWTGP PEPLEEAVAK FFSASCVPCA DGKQYPNLCR LCAGTEQNKC
ACSSQEPYFG YSGAFKCLQD GAGDVAFVRD STVFENLPDK ADQDKYELLC
LNNTRKPVDA FKDCHLARVP SHAVVARSVG GKEDLIWRL QKAQENFGKD
KSSAFQLFGS PSGEKDLLFK DSAIGFLRIP SNIDSELYLG FNYINAIQSL
K
```



All products are for RESEARCH USE ONLY. Not for diagnostic & therapeutic purposes!