

# Recombinant ATPase, Na<sup>+</sup>/K<sup>+</sup> Transporting Beta 3 Polypeptide (ATP1b3)

Catalog No: tcup1832



## Available Sizes

---

**Size:** 10ug

---

**Size:** 50ug

---

**Size:** 200ug

---



## Specifications

---

**Application:**

Positive Control; Immunogen; SDS-PAGE; WB.

---

**Species:**

Homo sapiens (Human)

---

**Source:**

E.coli

---

**Purity / Grade:**

≥ 98%

---

**Amino Acids:**

Met61~Phe273

---

**SwissProt:**

P54709

---

**Predicted Molecular Weight:**

27.7kDa

---

**Observed Molecular Weight:**

27.7kDa

---

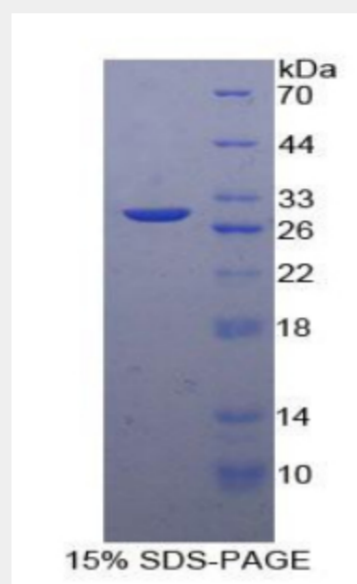
**Tags:**

two N-terminal Tags, His-tag and T7-tag

---

**Product Description**

Prokaryotic expression



All products are for RESEARCH USE ONLY. Not for diagnostic & therapeutic purposes!