

# Recombinant Laminin Alpha 1 (LAMa1)

Catalog No: **tcup1511**



## Available Sizes

---

**Size:** 10ug

**Size:** 50ug

**Size:** 200ug



## Specifications

---

**Application:**

Positive Control; Immunogen; SDS-PAGE; WB.

**Species:**

Homo sapiens (Human)

**Source:**

E.coli

**Purity / Grade:**

≥ 95%

**Amino Acids:**

Val2613~Phe2746

**SwissProt:**

P25391

**Predicted Molecular Weight:**

16.2kDa

**Observed Molecular Weight:**

16.2kDa

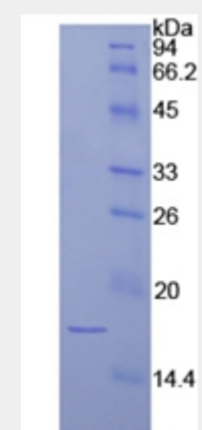
**Tags:**

N-terminal His-Tag

## Product Description

Prokaryotic expression

```
VESRTINV SNLYVGGIPE GEGTSLLTMR RSFHGCIKNL  
IFNLELLDFN SAVGHEQVDL DTCWLSERP K LAPDAEDSKL LPEPRAFPEQ  
CVVDAALEYV PGAHQFGLTQ NSHFILPFNQ SAVRKLSVE LSIRTF
```



All products are for RESEARCH USE ONLY. Not for diagnostic & therapeutic purposes!