

# Recombinant Endothelin Converting Enzyme 1 (ECE1)

Catalog No: **tcup1323**



## Available Sizes

**Size:** 10ug

**Size:** 50ug

**Size:** 200ug



## Specifications

**Application:**

Positive Control; Immunogen; SDS-PAGE; WB.

**Species:**

Rattus norvegicus (Rat)

**Source:**

E.coli

**Purity / Grade:**

≥ 95%

**Amino Acids:**

His214~Ala448

**SwissProt:**

P42893

**Predicted Molecular Weight:**

30.7kDa

**Observed Molecular Weight:**

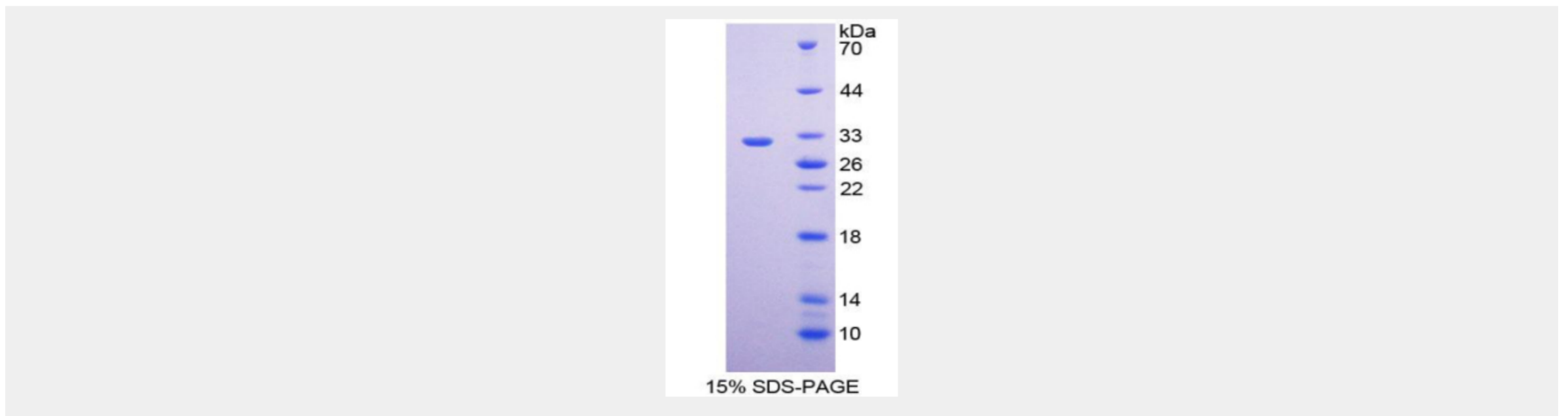
30.7kDa

**Tags:**

two N-terminal Tags, His-tag and T7-tag

## Product Description

Prokaryotic expression



All products are for RESEARCH USE ONLY. Not for diagnostic & therapeutic purposes!