

Recombinant Endothelin Converting Enzyme 1 (ECE1)

Catalog No: **tcup1322**



Available Sizes

Size: 10ug

Size: 50ug

Size: 200ug



Specifications

Application:

Positive Control; Immunogen; SDS-PAGE; WB.

Species:

Mus musculus (Mouse)

Source:

E.coli

Purity / Grade:

≥ 98%

Amino Acids:

Ala326~Asn577

SwissProt:

Q4PZA2

Predicted Molecular Weight:

33.3kDa

Observed Molecular Weight:

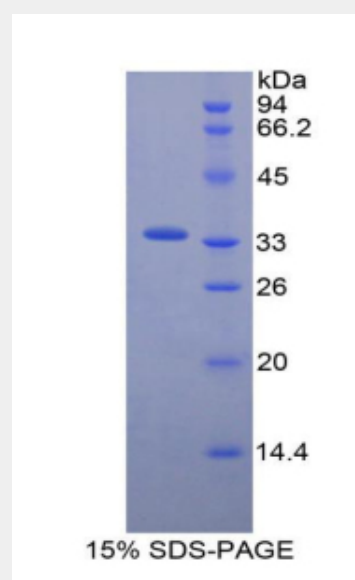
33.3kDa

Tags:

two N-terminal Tags, His-tag and T7-tag

Product Description

Prokaryotic expression



All products are for RESEARCH USE ONLY. Not for diagnostic & therapeutic purposes!