

Recombinant Lipase, Endothelial (LIPG)

Catalog No: tcup1284



Available Sizes

Size: 10ug

Size: 50ug

Size: 200ug



Specifications

Application:

Positive Control; Immunogen; SDS-PAGE; WB.

Species:

Rattus norvegicus (Rat)

Source:

E.coli

Purity / Grade:

≥ 92%

Amino Acids:

Gly203~Lys471

SwissProt:

Q8VBX1

Predicted Molecular Weight:

34.7kDa

Observed Molecular Weight:

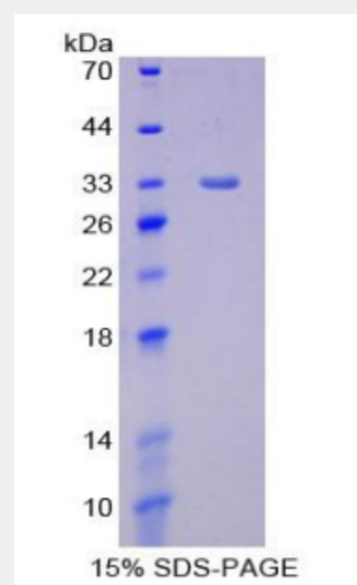
34.7kDa

Tags:

two N-terminal Tags, His-tag and T7-tag

Product Description

Prokaryotic expression



All products are for RESEARCH USE ONLY. Not for diagnostic & therapeutic purposes!