

# Recombinant Lipase, Endothelial (LIPG)

Catalog No: tcup1282



## Available Sizes

**Size:** 10ug

**Size:** 50ug

**Size:** 200ug



## Specifications

**Application:**

Positive Control; Immunogen; SDS-PAGE; WB.

**Species:**

Homo sapiens (Human)

**Source:**

E.coli

**Purity / Grade:**

≥ 98%

**Amino Acids:**

Ala175~Ile412

**SwissProt:**

Q9Y5X9

**Predicted Molecular Weight:**

30.4kDa

**Observed Molecular Weight:**

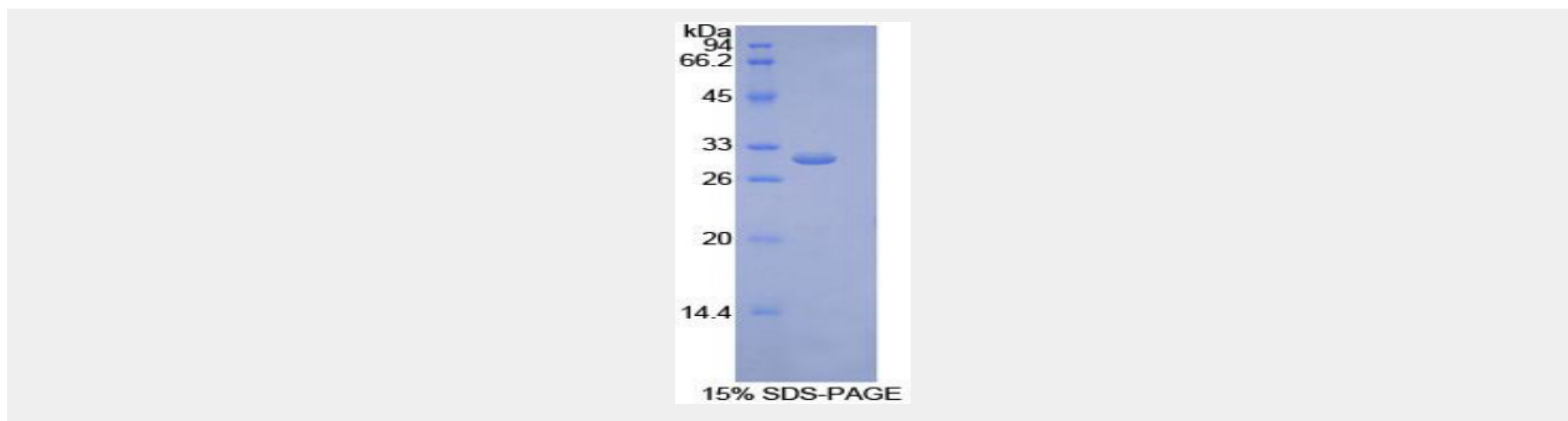
30.4kDa

**Tags:**

two N-terminal Tags, His-tag and T7-tag

## Product Description

Prokaryotic expression



All products are for RESEARCH USE ONLY. Not for diagnostic & therapeutic purposes!