

Recombinant Elastin Microfibril Interface Located Protein 1 (EMILIN1)

Catalog No: tcup1212



Available Sizes

Size: 10ug

Size: 50ug

Size: 200ug



Specifications

Application:

Positive Control; Immunogen; SDS-PAGE; WB.

Species:

Rattus norvegicus (Rat)

Source:

E.coli

Purity / Grade:

≥ 98%

Amino Acids:

Leu684~Gln899

SwissProt:

D3Z9E1

Predicted Molecular Weight:

26.0kDa

Observed Molecular Weight:

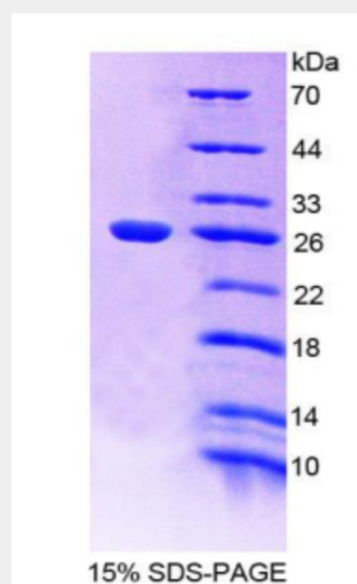
26.0kDa

Tags:

two N-terminal Tags, His-tag and T7-tag

Product Description

Prokaryotic expression



All products are for RESEARCH USE ONLY. Not for diagnostic & therapeutic purposes!