

Recombinant Stromal Cell Derived Factor 1 (SDF1)

Catalog No: tcup600



Available Sizes

Size: 10ug

Size: 50ug

Size: 200ug



Specifications

Application:

Positive Control; Immunogen; SDS-PAGE; WB.

Species:

Rattus norvegicus (Rat)

Source:

E.coli

Purity / Grade:

≥ 98%

Amino Acids:

Gly21~Lys89

SwissProt:

Q9QZD1

Predicted Molecular Weight:

40.4kDa

Observed Molecular Weight:

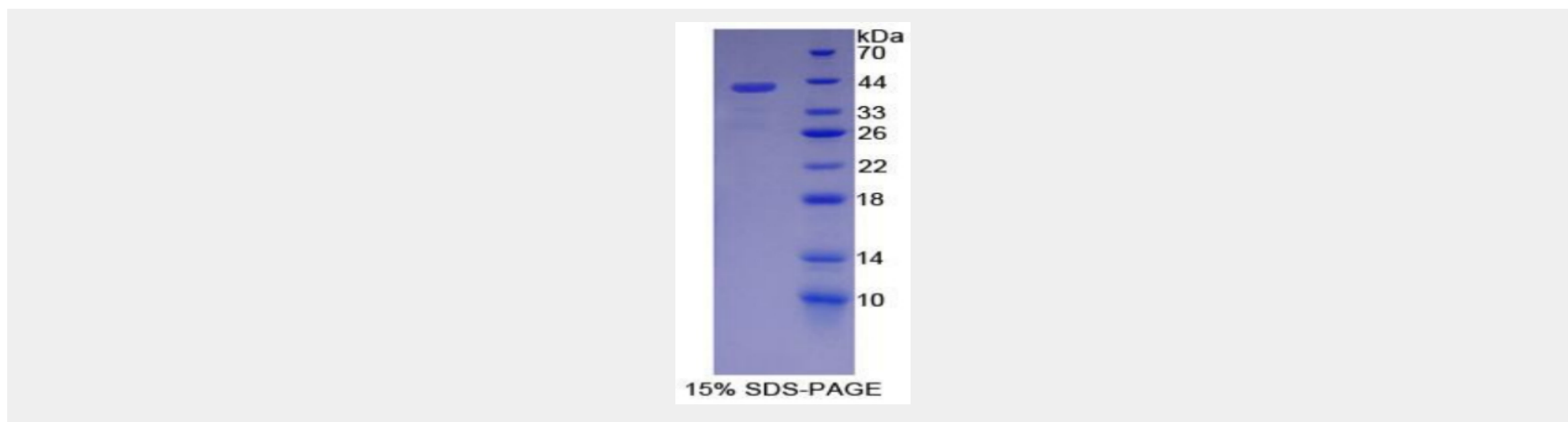
40.4kDa

Tags:

two N-terminal Tags, His-tag and GST-tag

Product Description

Prokaryotic expression



All products are for RESEARCH USE ONLY. Not for diagnostic & therapeutic purposes!