

Recombinant Creatine Kinase, Muscle (CKM)

Catalog No: tcup555



Available Sizes

Size: 10ug

Size: 50ug

Size: 200ug



Specifications

Application:

Positive Control; Immunogen; SDS-PAGE; WB.

Species:

Sus scrofa; Porcine (Pig)

Source:

E.coli

Purity / Grade:

≥ 92%

Amino Acids:

Lys11~Leu367

SwissProt:

Q5XLD3

Predicted Molecular Weight:

72.3kDa

Observed Molecular Weight:

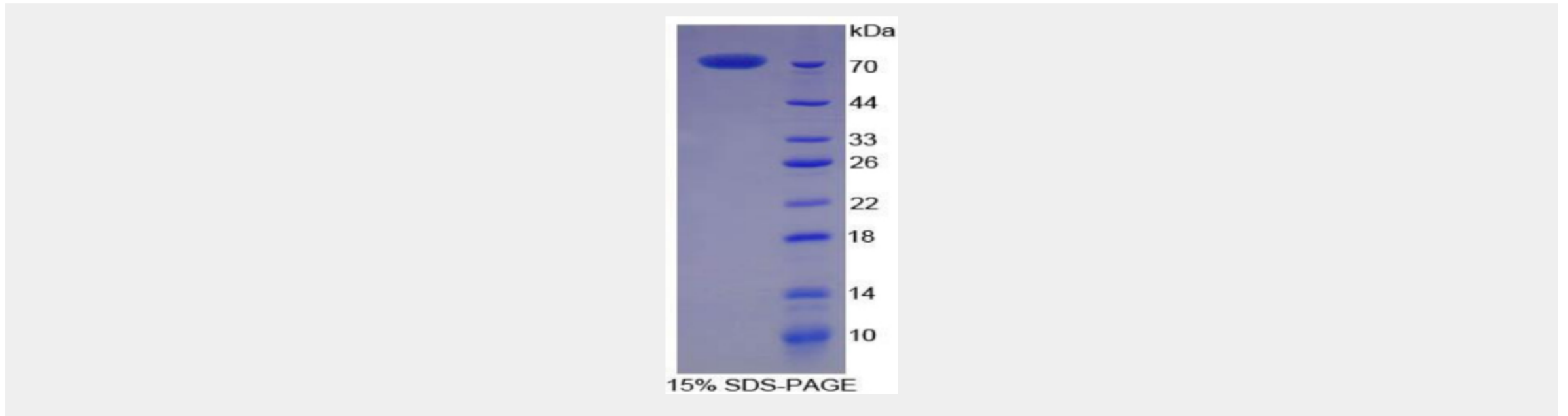
72.3kDa

Tags:

two N-terminal Tags, His-tag and GST-tag

Product Description

Prokaryotic expression



All products are for RESEARCH USE ONLY. Not for diagnostic & therapeutic purposes!