

# Recombinant Insulin Like Growth Factor 2 (IGF2)

Catalog No: tcup318



## Available Sizes

**Size:** 10ug

**Size:** 50ug

**Size:** 200ug



## Specifications

**Application:**

Positive Control; Immunogen; SDS-PAGE; WB.

**Species:**

Rattus norvegicus (Rat)

**Source:**

E.coli

**Purity / Grade:**

≥ 98%

**Amino Acids:**

Ala25~Lys181

**SwissProt:**

B7NZU3

**Predicted Molecular Weight:**

21.0kDa

**Observed Molecular Weight:**

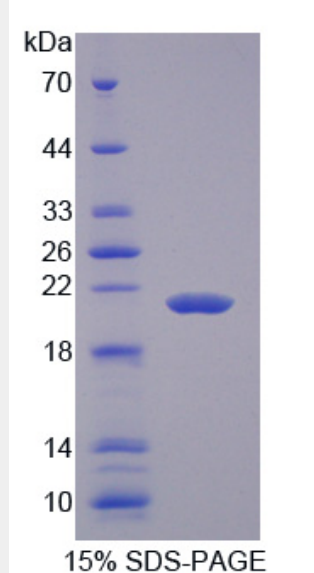
21.0kDa

**Tags:**

N-terminal His-Tag

## Product Description

Prokaryotic expression



All products are for RESEARCH USE ONLY. Not for diagnostic & therapeutic purposes!