

# Recombinant Insulin Like Growth Factor 2 (IGF2)

Catalog No: tcup315



## Available Sizes

**Size:** 10ug

**Size:** 50ug

**Size:** 200ug



## Specifications

**Application:**

Positive Control; Immunogen; SDS-PAGE; WB.

**Species:**

Homo sapiens (Human)

**Source:**

E.coli

**Purity / Grade:**

≥ 92%

**Amino Acids:**

Ala25~Glu91

**SwissProt:**

p01344

**Predicted Molecular Weight:**

11.3kDa

**Observed Molecular Weight:**

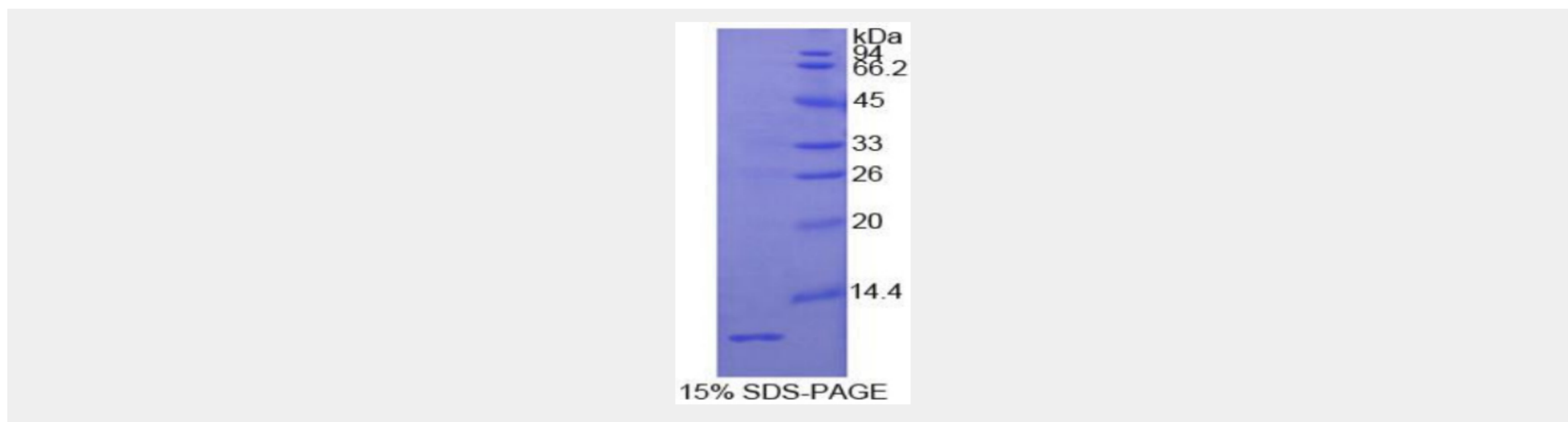
11.3kDa

**Tags:**

N-terminal His-tag

## Product Description

Prokaryotic expression



All products are for RESEARCH USE ONLY. Not for diagnostic & therapeutic purposes!