

Recombinant Selectin, Endothelium (SELE)

Catalog No: tcup213



Available Sizes

Size: 10ug

Size: 50ug

Size: 200ug



Specifications

Application:

Positive Control; Immunogen; SDS-PAGE; WB.

Species:

Oryctolagus cuniculus (Rabbit)

Source:

E.coli

Purity / Grade:

≥ 95%

Amino Acids:

Ala30~Thr142

SwissProt:

P27113

Predicted Molecular Weight:

16.9kDa

Observed Molecular Weight:

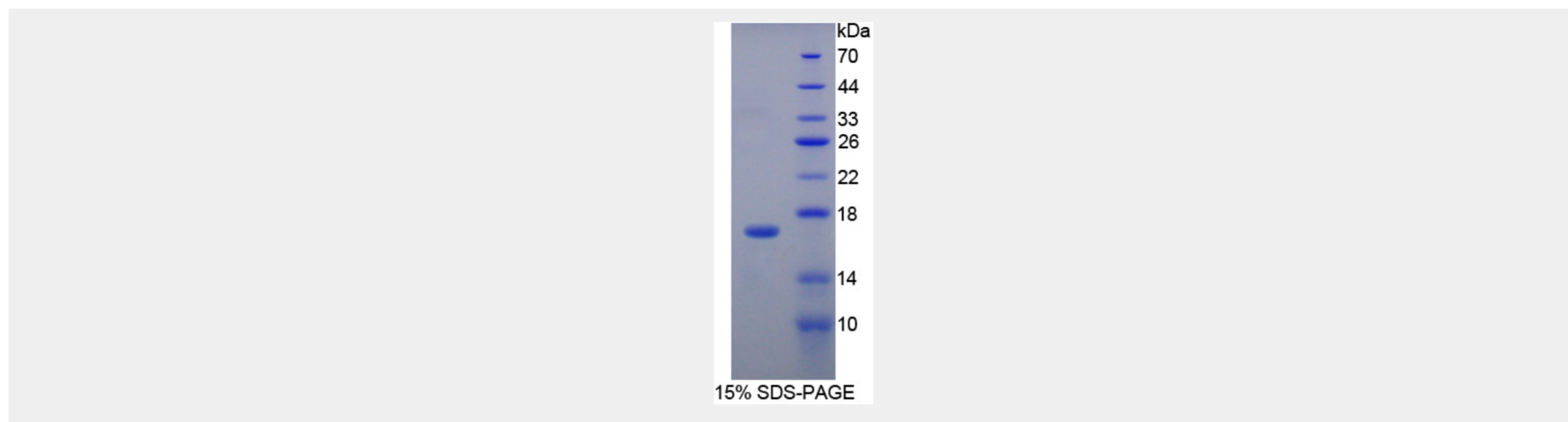
16.9kDa

Tags:

N-terminal His-Tag, T7 tag

Product Description

Prokaryotic expression



All products are for RESEARCH USE ONLY. Not for diagnostic & therapeutic purposes!