

Recombinant Selectin, Endothelium (SELE)

Catalog No: tcup208



Available Sizes

Size: 10ug

Size: 50ug

Size: 200ug



Specifications

Application:

Positive Control; Immunogen; SDS-PAGE; WB.

Species:

Canis familiaris; Canine (Dog)

Source:

E.coli

Purity / Grade:

≥ 98%

Amino Acids:

Trp23~Val240

SwissProt:

P33730

Predicted Molecular Weight:

28.3kDa

Observed Molecular Weight:

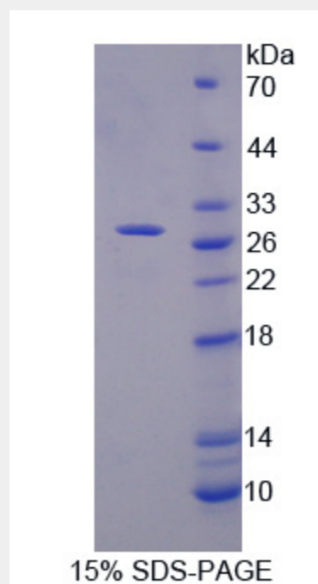
28.3kDa

Tags:

N-terminal His-Tag

Product Description

Prokaryotic expression



All products are for RESEARCH USE ONLY. Not for diagnostic & therapeutic purposes!