

# Recombinant Cadherin, Epithelial (CDHE)

Catalog No: **tcup181**



## Available Sizes

---

**Size:** 10ug

**Size:** 50ug

**Size:** 200ug



## Specifications

---

**Application:**

Positive Control; Immunogen; SDS-PAGE; WB.

**Species:**

Sus scrofa; Porcine (Pig)

**Source:**

E.coli

**Purity / Grade:**

≥ 95%

**Amino Acids:**

Phe375~Thr631

**SwissProt:**

C6EVT4

**Predicted Molecular Weight:**

60.2kDa

**Observed Molecular Weight:**

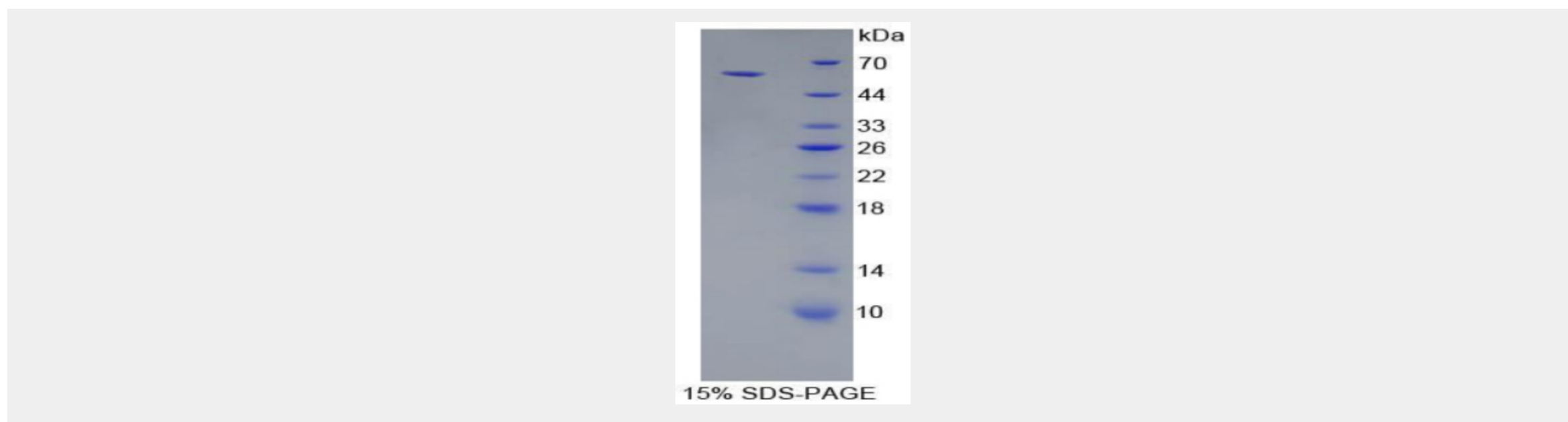
60.2kDa

**Tags:**

two N-terminal Tags, His-tag and GST-tag

## Product Description

Prokaryotic expression



All products are for RESEARCH USE ONLY. Not for diagnostic & therapeutic purposes!