

Active Colony Stimulating Factor 2, Granulocyte Macrophage (GMCSF)

Catalog No: tcup65



Available Sizes

Size: 10ug

Size: 50ug

Size: 200ug



Specifications

Application:

Cell culture; Activity Assays.

Species:

Homo sapiens (Human)

Source:

293F cell

Purity / Grade:

> 95%

Amino Acids:

Ala18~Glu144

SwissProt:

P04141

Predicted Molecular Weight:

16.1kDa

Observed Molecular Weight:

19-26kDa

Tags:

N-terminal His Tag

Product Description

Eukaryotic expression

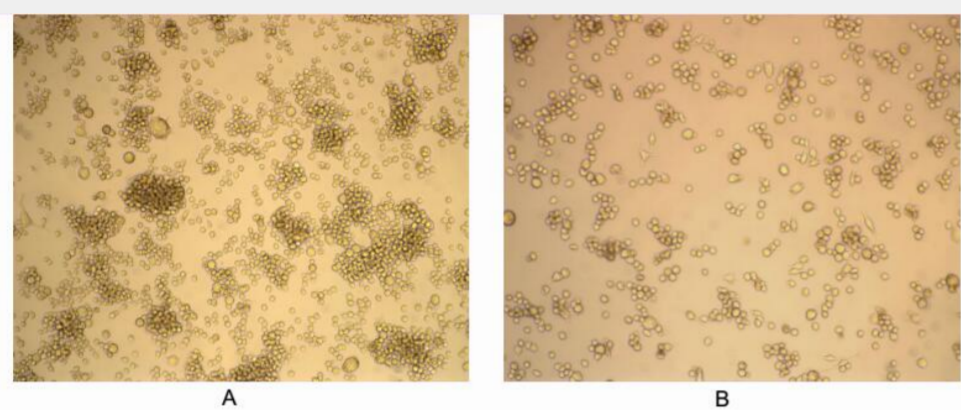
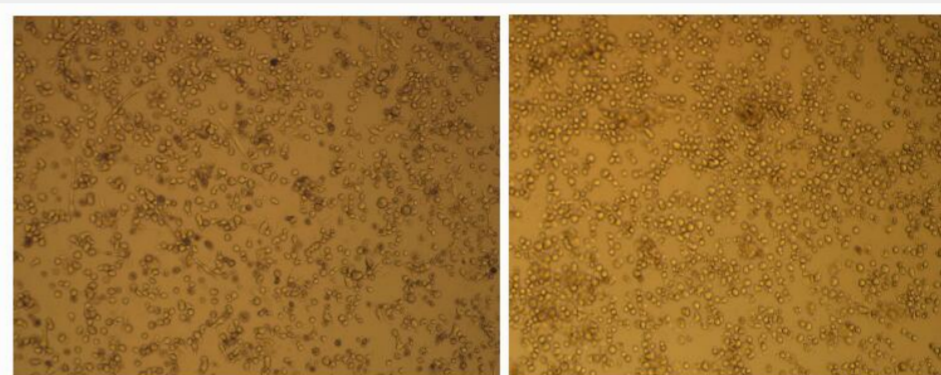


Figure 1. Effect of GM-CSF on TF-1 cells.

(A) TF-1 cells cultured in RPMI 1640, stimulated with GM-CSF (2ng/mL);

(B) Unstimulated TF-1 cells cultured in RPMI 1640.



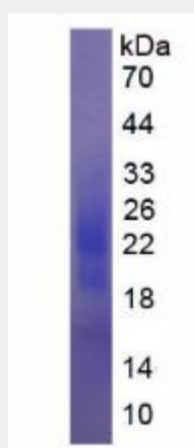
A

B

Figure 2. Effect of GM-CSF on U937 cells.

(A) U937 cells cultured in RPMI 1640, stimulated with GM-CSF (10ng/mL);

(B) Unstimulated U937 cells cultured in RPMI 1640.



All products are for RESEARCH USE ONLY. Not for diagnostic & therapeutic purposes!