

Rat WNT10B (Wingless-Type MMTV Integration Site Family, Member 10B) ELISA Kit

Catalog No: tcee4854



Available Sizes

Size: 96T



Specifications

Research Area:

Metabolism, Stem cells, Neuroscience, Cancer

Species Reactivity:

Rat

Sample Type:

Serum, plasma and other biological fluids

Assay Type:

Sandwich

Sensitivity:

0.19ng/mL

Detection Range:

0.31~20ng/mL

Assay Time:

4.5h

Detection Method:

Sandwich-Ab

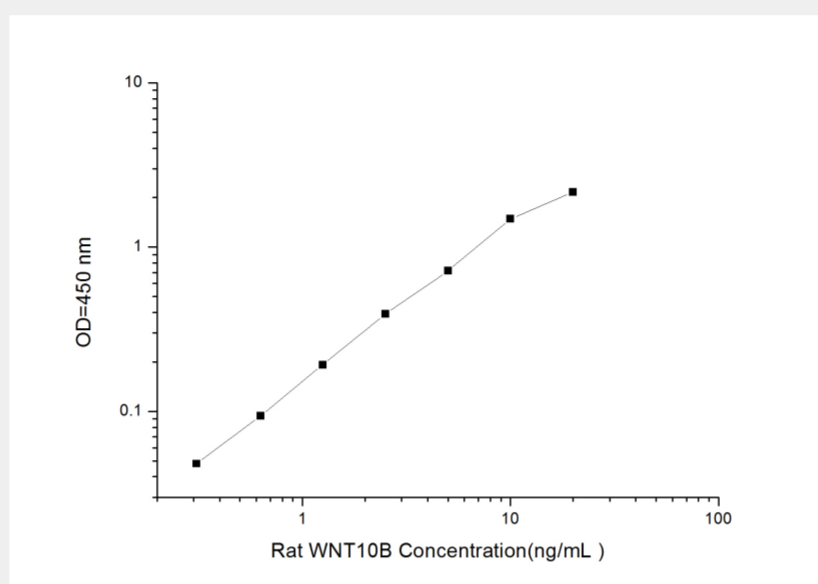
Tested Application:

ELISA

Storage Instruction:

An unopened kit can be stored at 4°C for 1 month. If the kit is not used within 1 month, store the items separately

according to the detailed information on the manual once the kit is received



All products are for RESEARCH USE ONLY. Not for diagnostic & therapeutic purposes!