

# Rat $\alpha$ 2-AP ( $\alpha$ 2-Antiplasmin) ELISA Kit

Catalog No: tcee4510



## Available Sizes

---

**Size:** 96T



## Specifications

---

**Research Area:**

Cell biology, Cardiovascular

**Species Reactivity:**

Rat

**Sample Type:**

Serum, plasma and other biological fluids

**Assay Type:**

Sandwich

**Sensitivity:**

1.88ng/mL

**Detection Range:**

3.13~200ng/mL

**Assay Time:**

4.5h

**Detection Method:**

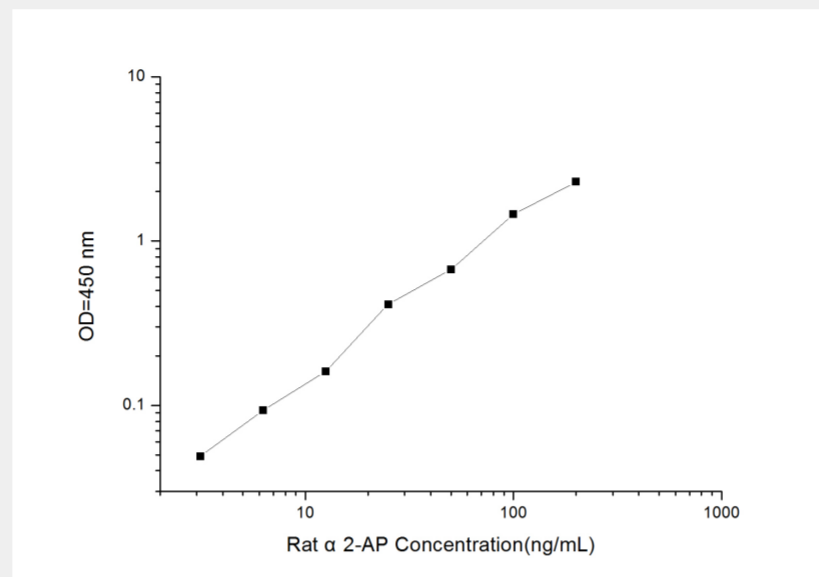
Sandwich-Ab

**Tested Application:**

ELISA

**Storage Instruction:**

An unopened kit can be stored at 4°C for 1 month. If the kit is not used within 1 month, store the items separately according to the detailed information on the manual once the kit is received



All products are for RESEARCH USE ONLY. Not for diagnostic & therapeutic purposes!