

Rat TACR1 (Tachykinin Receptor 1) ELISA Kit

Catalog No: tcee4446



Available Sizes

Size: 96T



Specifications

Research Area:

Neuroscience, Cancer

Species Reactivity:

Rat

Sample Type:

Serum, plasma and other biological fluids

Assay Type:

Sandwich

Sensitivity:

75.00pg/mL

Detection Range:

125.00~8000pg/mL

Assay Time:

4.5h

Detection Method:

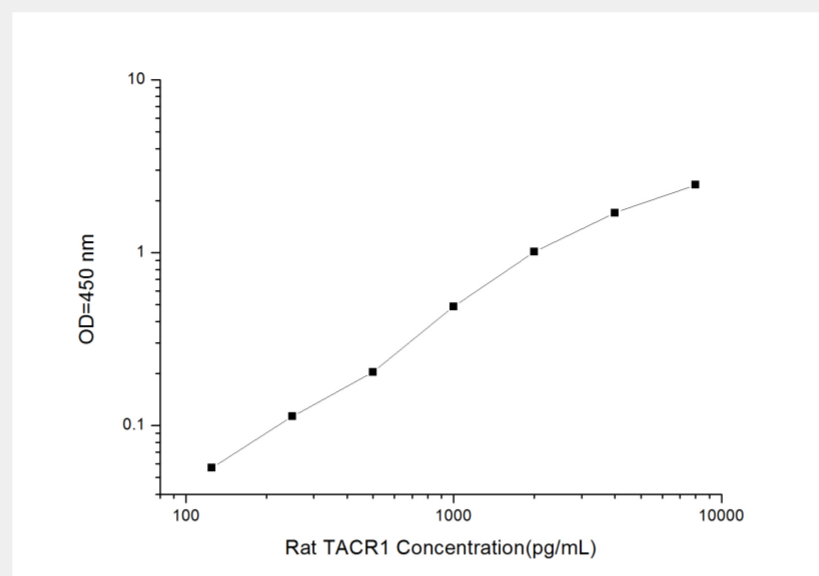
Sandwich-Ab

Tested Application:

ELISA

Storage Instruction:

An unopened kit can be stored at 4°C for 1 month. If the kit is not used within 1 month, store the items separately according to the detailed information on the manual once the kit is received



All products are for RESEARCH USE ONLY. Not for diagnostic & therapeutic purposes!