

Mouse TACR2 (Tachykinin Receptor 2) ELISA Kit

Catalog No: tcee3332



Available Sizes

Size: 96T



Specifications

Research Area:

Neuroscience

Species Reactivity:

Mouse

Sample Type:

Serum, plasma and other biological fluids

Assay Type:

Sandwich

Sensitivity:

0.09ng/mL

Detection Range:

0.16~10ng/mL

Assay Time:

4.5h

Detection Method:

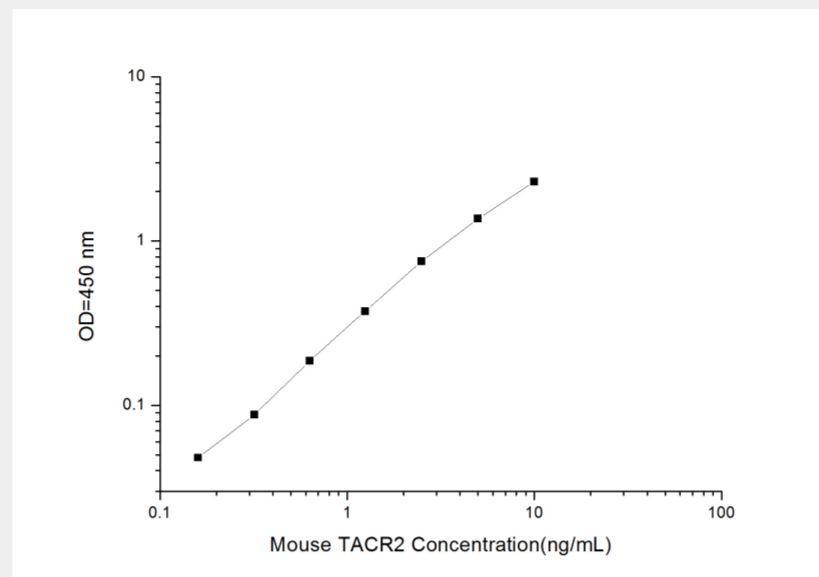
Sandwich-Ab

Tested Application:

ELISA

Storage Instruction:

An unopened kit can be stored at 4°C for 1 month. If the kit is not used within 1 month, store the items separately according to the detailed information on the manual once the kit is received



All products are for RESEARCH USE ONLY. Not for diagnostic & therapeutic purposes!