

Mouse MIP-3 β / ELC / CCL19 (Macrophage Inflammatory Protein 3 β) ELISA Kit

Catalog No: tcee3051



Available Sizes

Size: 96T



Specifications

Research Area:

Signal transduction, Immunology

Species Reactivity:

Mouse

Sample Type:

Serum, plasma and other biological fluids

Assay Type:

Sandwich

Sensitivity:

9.38pg/mL

Detection Range:

15.63~1000pg/mL

Assay Time:

4.5h

Detection Method:

Sandwich-Ab

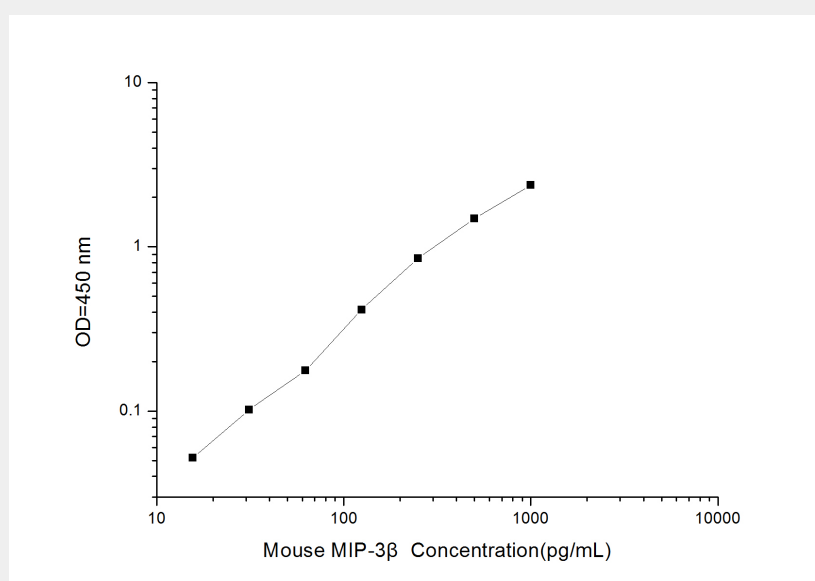
Tested Application:

ELISA

Storage Instruction:

An unopened kit can be stored at 4°C for 1 month. If the kit is not used within 1 month, store the items separately

according to the detailed information on the manual once the kit is received



All products are for RESEARCH USE ONLY. Not for diagnostic & therapeutic purposes!