

# Human RPS6K $\beta$ 1 (Ribosomal Protein S6 Kinase Beta 1) ELISA Kit

Catalog No: tcee1034



## Available Sizes

---

**Size:** 96T



## Specifications

---

**Research Area:**

Cell biology, Metabolism, Epigenetics and Nuclear Signaling, Signal transduction, Cancer

**Species Reactivity:**

Human

**Sample Type:**

Serum, plasma and other biological fluids

**Assay Type:**

Sandwich

**Sensitivity:**

0.09ng/mL

**Detection Range:**

0.16~10ng/mL

**Assay Time:**

4.5h

**Detection Method:**

Sandwich-Ab

**Tested Application:**

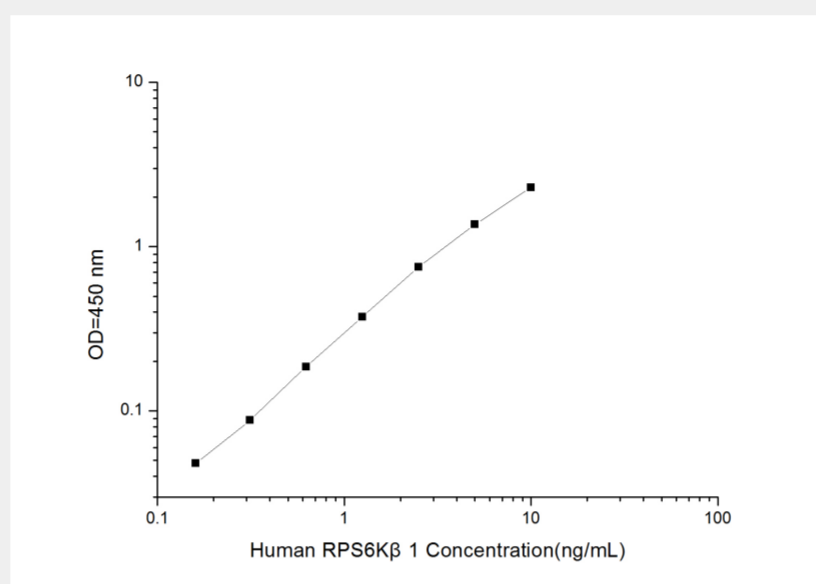
ELISA

**Storage Instruction:**

An unopened kit can be stored at 4°C for 1 month. If the kit is not used within 1 month, store the items separately

according to the detailed information on the manual once the kit is received

---



All products are for RESEARCH USE ONLY. Not for diagnostic & therapeutic purposes!