

anti GAPDH Loading Control Monoclonal Antibody

Catalog No: tcaba12



Available Sizes

Size: 0.1mg



Specifications

Application:

ELISA, Immunostaining, Western Blotting

Research Area:

loading control

Species Reactivity:

BL-21 bacteria, Sf9 insect, Saccharomyces cerevisiae (yeast), human, mouse, rat, rabbit, chicken, hamster

Host Species:

Mouse

Conjugation:

Unconjugated

Clonality:

Monoclonal Antibody

Clones:

GA1R

Isotype:

Mouse IgG1

Form:

Liquid

Storage Buffer:

PBS, Stabilizers, 0.05% ProClin 300

Concentration:

1mg/mL

Recommended Dilution:

WB (ECL): 1:1000-10

000 dilutions (incubate for 1 hour at room temperature) IS: 1:500-2000 dilution

Storage Instruction:

Avoid repeated freeze/thaw cycles. Aliquot and store at -20 °C for 12 months.

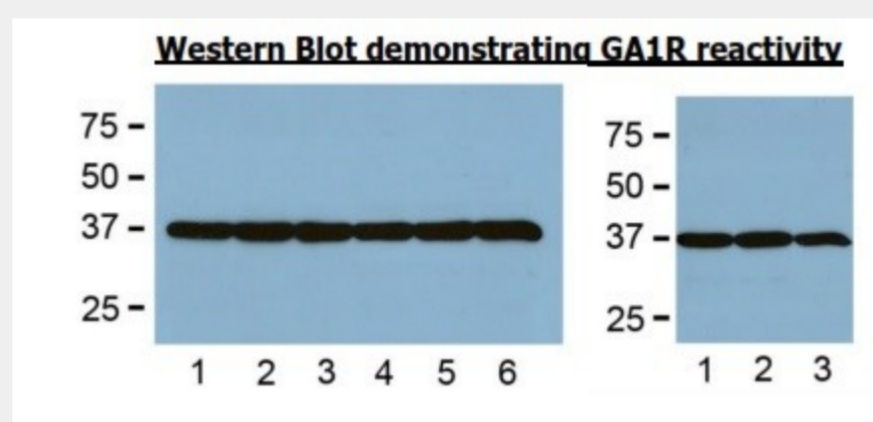


Fig. . LEFT: 1:2000 (0.5µg/mL) Ab dilution used in WB of 5µg/lane tissue lysates from human (1), mouse (2), rat (3), rabbit (4), chicken (5), and hamster (6). RIGHT: WB from BL-21 bacteria (1), Sf9 insect (2), and *Saccharomyces cerevisiae* (3)

All products are for RESEARCH USE ONLY. Not for diagnostic & therapeutic purposes!