

# anti $\beta$ Tubulin Loading Control Antibody

Catalog No: tcaba2



## Available Sizes

---

**Size:** 0.1mg



## Specifications

---

**Application:**

ELISA, Immunostaining, Western Blotting, Dot Blot

**Research Area:**

loading control

**Species Reactivity:**

human, monkey, mouse, rat, rabbit, chicken

**Host Species:**

Mouse

**Conjugation:**

Unconjugated

**Clonality:**

Monoclonal Antibody

**Clones:**

BT7R

**Isotype:**

Mouse IgG2a

**Form:**

Liquid

**Storage Buffer:**

PBS, Stabilizers, 0.05% ProClin 300

**Concentration:**

1mg/mL

**Recommended Dilution:**

WB (ECL): 1:2

000-5

000 dilution (incubate for 1 hour at room temperature) IS: 1:500-2000 dilution

**Storage Instruction:**

Avoid repeated freeze/thaw cycles. Aliquot and store at -20 °C for 12 months.

**Western Blot demonstrating BT7R reactivity**

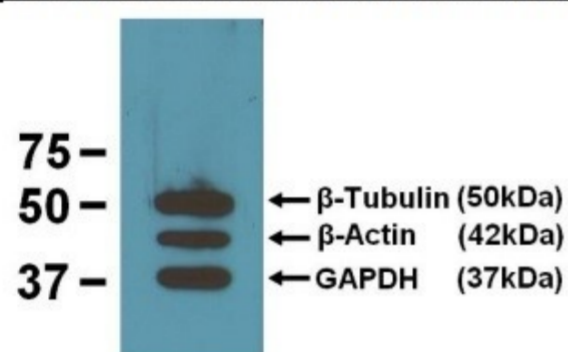


Fig. 1 Three loading control mAbs reacting against 10µg/lane of mouse brain tissue lysates. 50kDa band is Anti-βTubulin (BT7R) at 1:2000 dilution (0.5µg/mL); 42kDa band is Anti-βActin (BA3R) at 1:1000 dilution (1µg/mL); 37kDa band is AntiGAPDH (GA1R) at 1:5000 dilution (0.2µg/mL)

**Western Blot demonstrating BT7R reactivity**

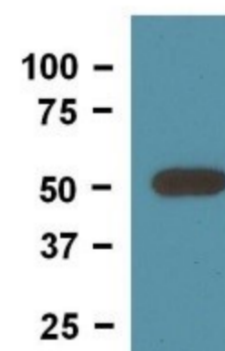


Fig. 02 1:4000 (0.25µg/mL) Ab dilution used in WB of 10µg/lane mouse brain tissue lysates

All products are for RESEARCH USE ONLY. Not for diagnostic & therapeutic purposes!