

# anti $\beta$ Actin Loading Control Monoclonal Antibody

Catalog No: tcaba1



## Available Sizes

---

**Size:** 0.1mg



## Specifications

---

**Application:**

ELISA, Immunostaining, Western Blotting

**Research Area:**

loading control

**Species Reactivity:**

human, mouse, rat, rabbit, chicken

**Host Species:**

Mouse

**Conjugation:**

Unconjugated

**Clonality:**

Monoclonal Antibody

**Clones:**

BA3R

**Isotype:**

Mouse IgG2b

**Form:**

Liquid

**Storage Buffer:**

PBS, Stabilizers, 0.05% ProClin 300

**Concentration:**

1mg/mL

---

**Recommended Dilution:**

WB (ECL): 1:1000-10

000 dilutions (incubate for 1 hour at room temperature) IS: 1:500-2000 dilution

---

**Storage Instruction:**

Avoid repeated freeze/thaw cycles. Aliquot and store at -20 °C for 12 months.

---

**Western Blot demonstrating BA3R reactivity**

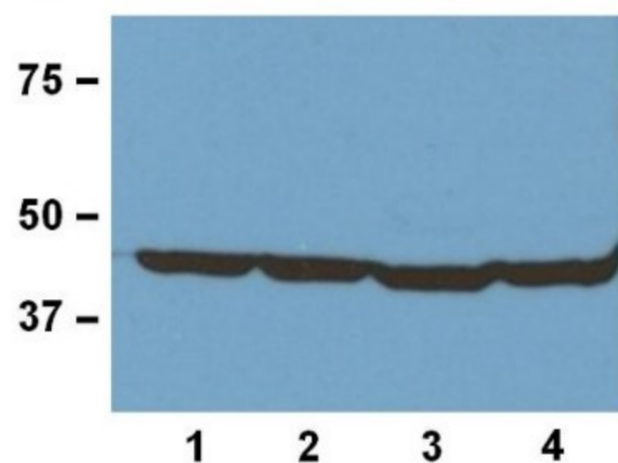


Fig. 1:1000 (1 $\mu$ g/mL) Ab dilution used in WB of 20 $\mu$ g/lane tissue lysates from human (1), mouse (2), rat (3), and rabbit (4)

All products are for RESEARCH USE ONLY. Not for diagnostic & therapeutic purposes!