

Anti Venus antibody

Catalog No: tcsa25965



Available Sizes

Size: 150μg

Size: 300μg



Specifications

Application:

WB, IF, IHC-p, IHC-F, IEM

Species Reactivity:

YFP, GFP, EGFP, Venus

Host Species:

Goat

Immunogen / Amino acids:

Purified recombinant GFP peptide from the jellyfish aequorea victoria produced in E. coli.

Conjugation:

Unconjugated

Clonality:

Polyclonal

Isotype:

IgG

Form:

Liquid

Storage Buffer:

PBS, 20% glycerol and 0.05% sodium azide.

Concentration:

3 mg/mL

Recommended Dilution:

Western blot 1:500-1:2

000 Immunofluorescence 1:50-1:1

000 Immunohistochemistry (paraffin) 1:50-1:1

000 Immunohistochemistry (frozen) 1:50-1:1

000

Storage Instruction:

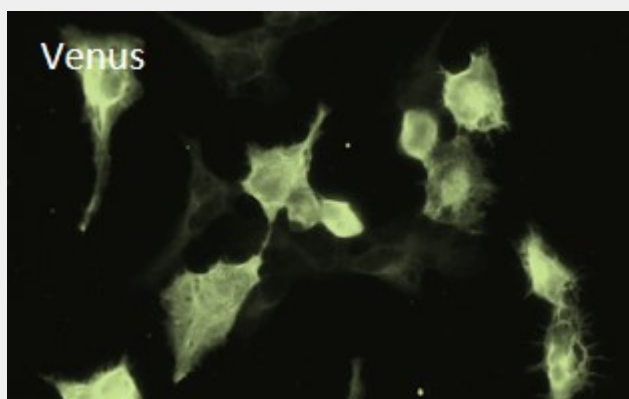
Store at -20°C, and avoid repeated freeze-thaw cycles.

Alternative Names:

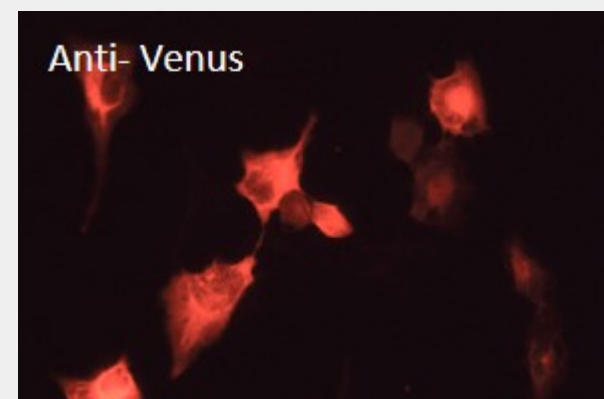
Venus antibody

Product Description

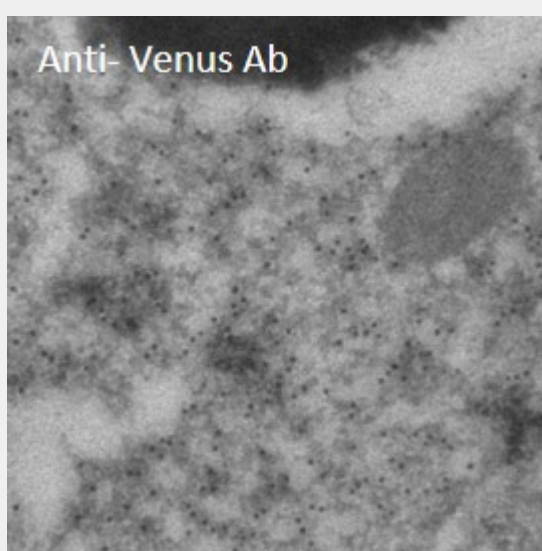
Goat polyclonal antibody to Venus. Venus is a genetic mutant of green fluorescent protein (GFP), derived from *Aequorea victoria*. Its excitation/emission peaks are 515/528 nm respectively and is often used as a donor-acceptor pair by researchers in FRET based co-localization studies.



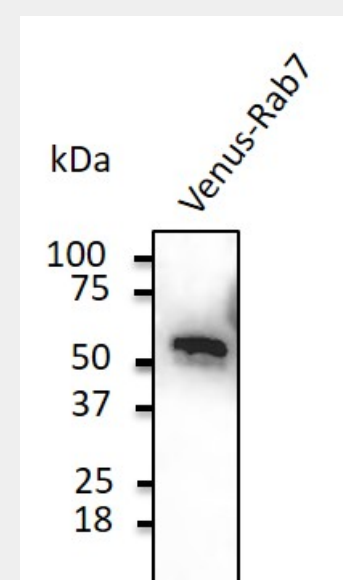
Immunofluorescence was carried out on 4% PFA fixed HEK293 cells transfected with Venus protein, using Anti-Venus Ab at a 1:50 dilution.



Immunofluorescence was carried out on 4% PFA fixed HEK293 cells transfected with Venus protein, using Anti-Venus Ab at a 1:50 dilution.



Immunogold labelling was carried out on epithelium cells, which were in vivo injected with Anti-Venus polyclonal antibody expressing vector.



Western Blot was carried out on HEK293 cells transduced with Venus-Rab7 Ad, using Anti-Venus polyclonal antibody at a 1:2,000 dilution, with lysates of 50 µg per lane and secondary antibody rabbit anti-goat IgG (HRP) at 1:10,000 dilution.

All products are for RESEARCH USE ONLY. Not for diagnostic & therapeutic purposes!