

Anti Rab25 antibody

Catalog No: tcsa25919



Available Sizes

Size: 100μg

Size: 400μg



Specifications

Application:

WB, IF, IHC-p, IHC-F

Species Reactivity:

Human, Mouse, Rat, Bovine, Dog, Chicken, Donkey, Cat, Goat, Guinea Pig, Hamster, Horse, Porcine, Rabbit, Sheep, Simian, Other

Host Species:

Goat

Immunogen / Amino acids:

Purified recombinant peptide derived from within residues 120 aa to the C-terminus of mouse Rab25 produced in E. coli.

Conjugation:

Unconjugated

Clonality:

Polyclonal

Isotype:

IgG

Form:

Liquid

Storage Buffer:

PBS, 20% glycerol and 0.05% sodium azide.

Concentration:

2 mg/mL

Recommended Dilution:

Western blot 1:250-1:2

000 Immunofluorescence 1:25-1:250 Immunohistochemistry (paraffin) 1:200-1:1:1

000 Immunohistochemistry (frozen) 1:200-1:1:1

000

Storage Instruction:

Store at -20°C, and avoid repeated freeze-thaw cycles.

Alternative Names:

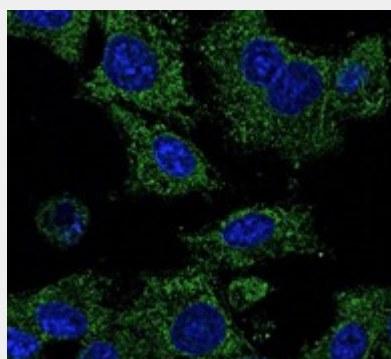
Ras-related protein Rab-25 antibody; CATX-8 antibody

SwissProt:

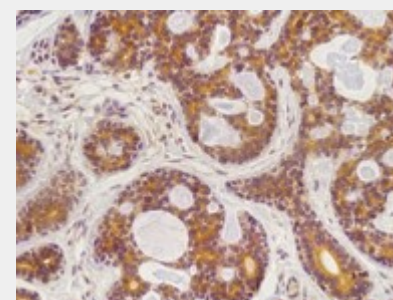
P57735_HUMAN

Product Description

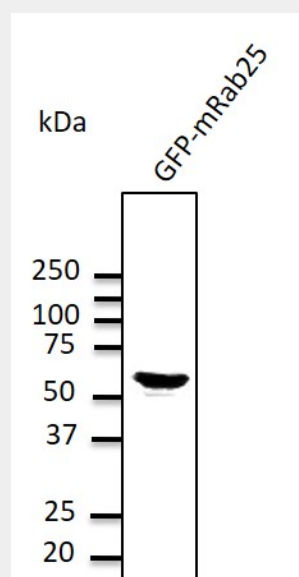
RAB25 belongs to the large RAB family of low molecular weight GTPases that are involved in intracellular membrane trafficking. Members of the RAB11 subfamily, including RAB25, control the return of internalized membrane-associated moieties to the cell surface.



Immunofluorescence was carried out on methanol fixed Hepa1-6 cells, using Anti-Rab25 polyclonal antibody at a 1:50 dilution.



IHC staining was carried out on formalin-fixed, paraffin-embedded mouse stomach after heat-induced antigen retrieval, using Anti-Rab25 polyclonal antibody at a 1:200 dilution.



Western Blot was carried out on HEK293 cells transfected with GFP-Rab25, using Anti-Rab25 polyclonal antibody at a 1:1,000 dilution and secondary antibody rabbit anti-goat IgG (HRP) at 1:10,000 dilution.

All products are for RESEARCH USE ONLY. Not for diagnostic & therapeutic purposes!