

Anti ERP57 antibody

Catalog No: tcsa25882



Available Sizes

Size: 300μg

Size: 1500μg



Specifications

Application:

WB, IF, IHC-p, IHC-F

Species Reactivity:

Human, Mouse, Rat, Bovine, Dog, Chicken, Donkey, Cat, Goat, Guinea Pig, Hamster, Horse, Porcine, Rabbit, Sheep, Simian, Other

Host Species:

Goat

Immunogen / Amino acids:

Recombinant peptide derived from within residues 300 aa to the C-terminus of human ERp57 produced in E. coli.

Conjugation:

Unconjugated

Clonality:

Polyclonal

Isotype:

IgG

Form:

Liquid

Storage Buffer:

PBS, 20% glycerol and 0.05% sodium azide.

Concentration:

2 mg/mL

Recommended Dilution:

Western blot 1:500-1:2

000 Immunofluorescence 1:50-1:500 Immunohistochemistry (paraffin) 1:200-1:1

000 Immunohistochemistry (frozen) 1:200-1:1

000

Storage Instruction:

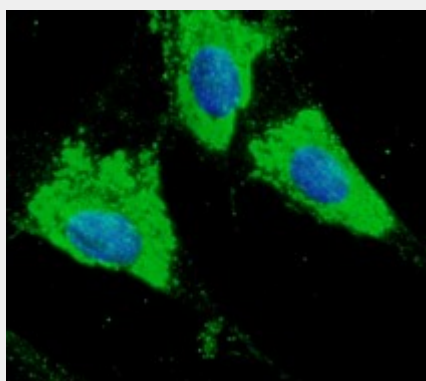
Store at -20°C, and avoid repeated freeze-thaw cycles.

SwissProt:

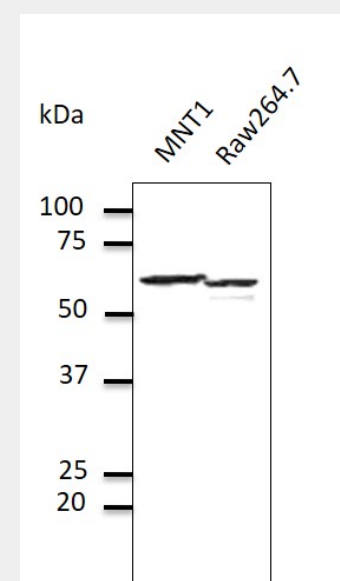
P30101_HUMAN

Product Description

Goat polyclonal to ERp57 - endoplasmic reticulum lumen marker. This endoplasmic reticulum protein interacts with lectin chaperones calreticulin and calnexin to modulate folding of newly synthesized glycoproteins. It has disulfide isomerase activity and complexes of lectins and this protein mediate protein folding by promoting formation of disulfide bonds in their glycoprotein substrates.



Immunofluorescence was carried out on 4% PFA fixed RPE cells, using Anti-ERP57 polyclonal antibody at a 1:100 dilution.



Western Blot was carried out on endoplasmic reticulum lumen marker, using Anti-ERP57 polyclonal antibody at a 1:500 dilution, with lysates of 100 µg per lane and secondary antibody rabbit anti-goat IgG (HRP) at 1:10,000 dilution.

All products are for RESEARCH USE ONLY. Not for diagnostic & therapeutic purposes!