

Anti SLR1 Antibody

Catalog No: tcsa24435



Available Sizes

Size: 100µl



Specifications

Application:

WB

Species Reactivity:

Oryza sativa

Host Species:

Rabbit

Immunogen / Amino acids:

Recombinant protein of Oryza sativa SLR1

Conjugation:

Unconjugated

Clonality:

Polyclonal

Isotype:

IgG

Form:

Liquid

Storage Buffer:

PBS with 0.02% sodium azide, 50% glycerol, pH7.3.

Recommended Dilution:

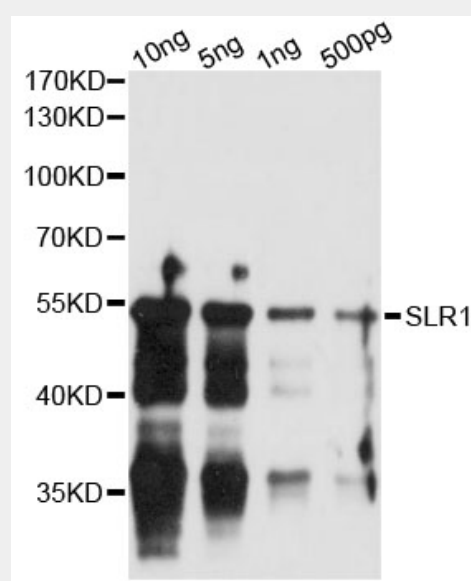
WB 1:500 - 1:2000

Storage Instruction:

Store at -20C. Avoid freeze / thaw cycles.

Alternative Names:

anti-SLR1 antibody



Western blot analysis of extracts of recombinant protein of *Oryza sativa* SLR1, using SLR1 antibody.

All products are for RESEARCH USE ONLY. Not for diagnostic & therapeutic purposes!