

Anti IFI16 Antibody

Catalog No: tcsa23568



Available Sizes

Size: 100µl



Specifications

Application:

WB, IHC

Species Reactivity:

Human, Mouse, Rat

Host Species:

Rabbit

Immunogen / Amino acids:

Recombinant protein of human IFI16

Conjugation:

Unconjugated

Clonality:

Polyclonal

Isotype:

IgG

Form:

Liquid

Storage Buffer:

PBS with 0.02% sodium azide, 50% glycerol, pH7.3.

Recommended Dilution:

WB 1:500 - 1:2000

IHC 1:50 - 1:200

Storage Instruction:

Store at -20C. Avoid freeze / thaw cycles.

Alternative Names:

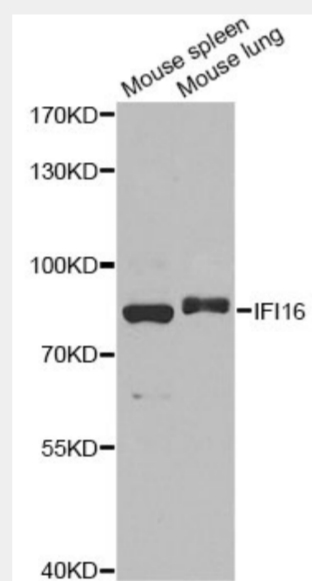
IFI16 antibody; Gamma-interferon-inducible protein 16 antibody; Ili-16 antibody; Interferon-inducible myeloid differentiation transcriptional activator antibody; IFI16 antibody; IFNGIP1 antibody

SwissProt:

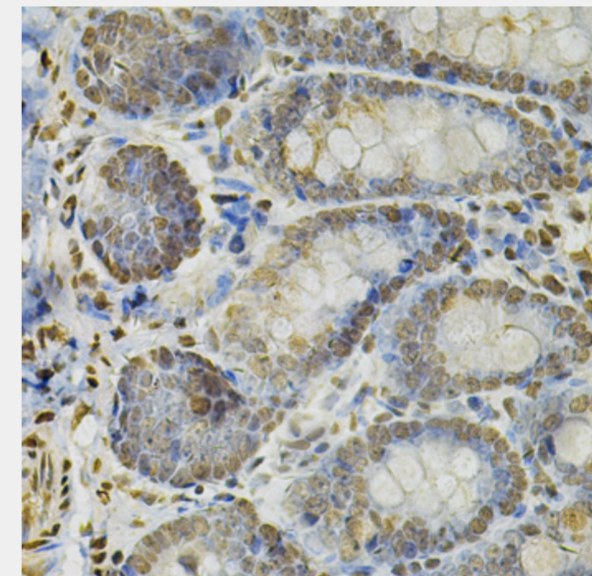
Q16666

Product Description

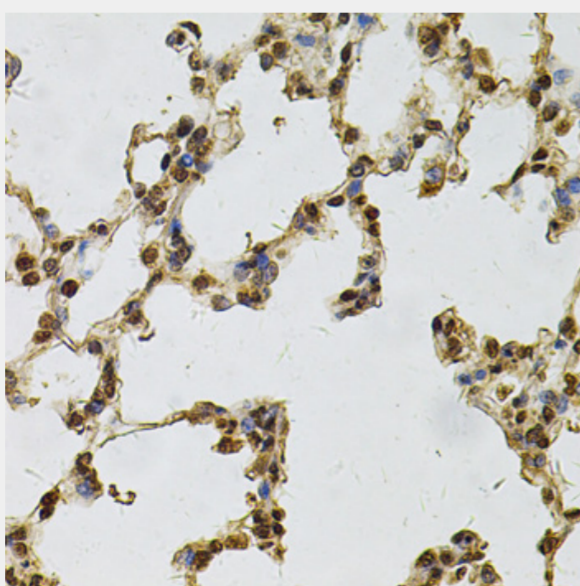
This gene encodes a member of the HIN-200 (hematopoietic interferon-inducible nuclear antigens with 200 amino acid repeats) family of cytokines. The encoded protein contains domains involved in DNA binding, transcriptional regulation, and protein-protein interactions. The protein localizes to the nucleoplasm and nucleoli, and interacts with p53 and retinoblastoma-1. It modulates p53 function, and inhibits cell growth in the Ras/Raf signaling pathway. Alternatively spliced transcript variants encoding different isoforms have been found for this gene.



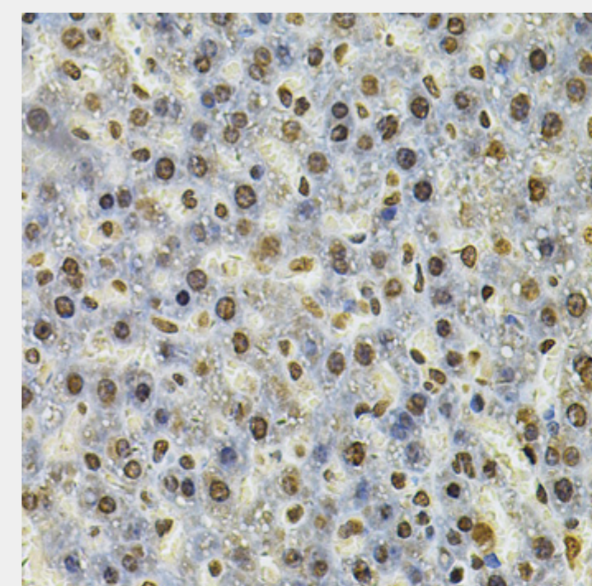
Western blot analysis of extracts of various cell lines, using IFI16 antibody at 1:1000 dilution. Secondary antibody: HRP Goat Anti-Rabbit IgG (H+L) at 1:10000 dilution. Lysates/proteins: 25ug per lane. Blocking buffer: 3% nonfat dry milk in TBST. Detection: ECL Basic Kit. Exposure time: 90s.



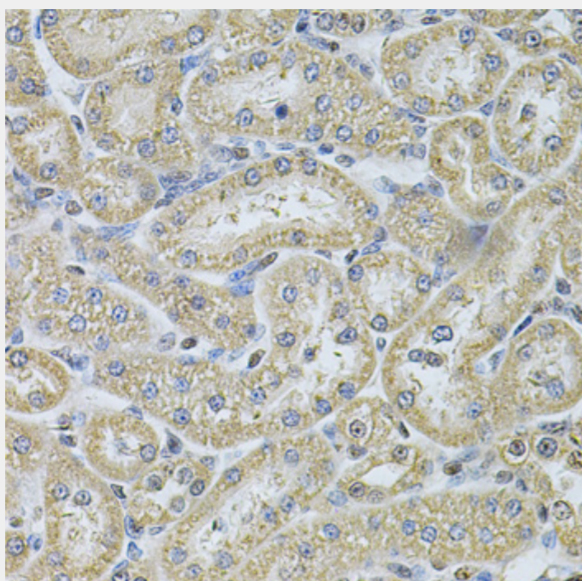
Immunohistochemistry of paraffin-embedded rat intestine using IFI16 Antibody at dilution of 1:100 (40x lens).



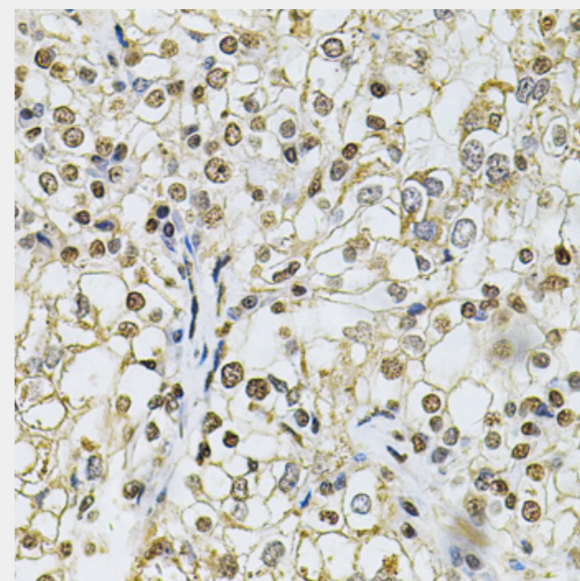
Immunohistochemistry of paraffin-embedded rat lung using IFI16 Antibody at dilution of 1:100 (40x lens).



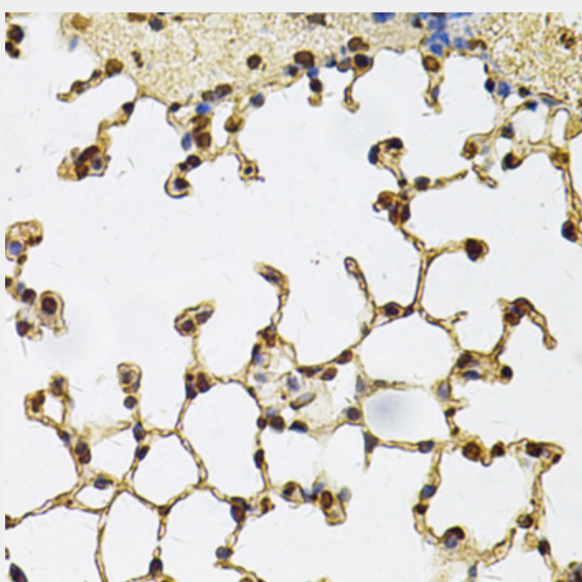
Immunohistochemistry of paraffin-embedded rat liver using IFI16 Antibody at dilution of 1:100 (40x lens).



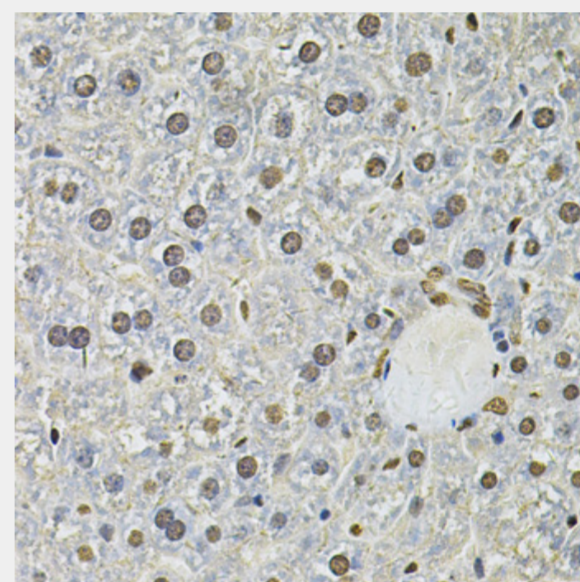
Immunohistochemistry of paraffin-embedded rat kidney using IFI16 Antibody at dilution of 1:100 (40x lens).



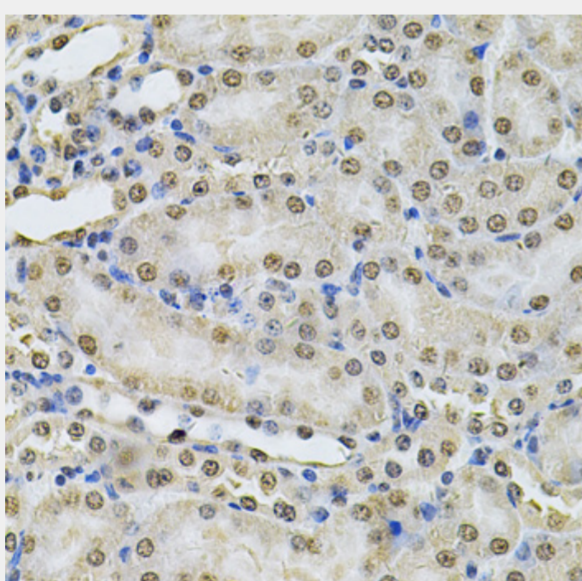
Immunohistochemistry of paraffin-embedded human kidney cancer using IFI16 Antibody at dilution of 1:100 (40x lens).



Immunohistochemistry of paraffin-embedded mouse lung using IFI16 Antibody at dilution of 1:100 (40x lens).



Immunohistochemistry of paraffin-embedded mouse liver using IFI16 Antibody at dilution of 1:100 (40x lens).



Immunohistochemistry of paraffin-embedded mouse kidney using IFI16 Antibody at dilution of 1:100 (40x lens).

All products are for RESEARCH USE ONLY. Not for diagnostic & therapeutic purposes!