

Anti TEAD1 Antibody

Catalog No: tcsa22975



Available Sizes

Size: 100μl



Specifications

Application:

WB, IHC, IF, ChIP

Species Reactivity:

Human, Mouse

Host Species:

Rabbit

Immunogen / Amino acids:

Recombinant protein of human TEAD1

Conjugation:

Unconjugated

Clonality:

Polyclonal

Isotype:

IgG

Form:

Liquid

Storage Buffer:

PBS with 0.02% sodium azide, 50% glycerol, pH7.3.

Recommended Dilution:

WB 1:500 - 1:2000

IHC 1:50 - 1:200

IF 1:50 - 1:200

CHIP 1:20 - 1:50

Storage Instruction:

Store at -20C. Avoid freeze / thaw cycles.

Alternative Names:

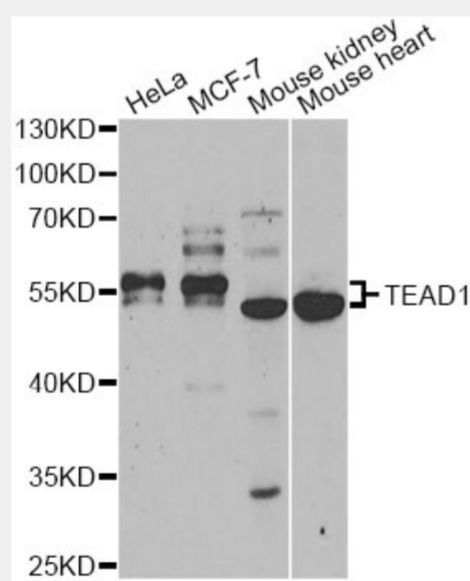
TEAD1 antibody; Transcriptional enhancer factor TEF-1 antibody; NTEF-1 antibody; Protein GT-IIC antibody; TEA domain family member 1 antibody; TEAD-1 antibody; Transcription factor 13 antibody; TCF-13 antibody; TEAD1 antibody; T

SwissProt:

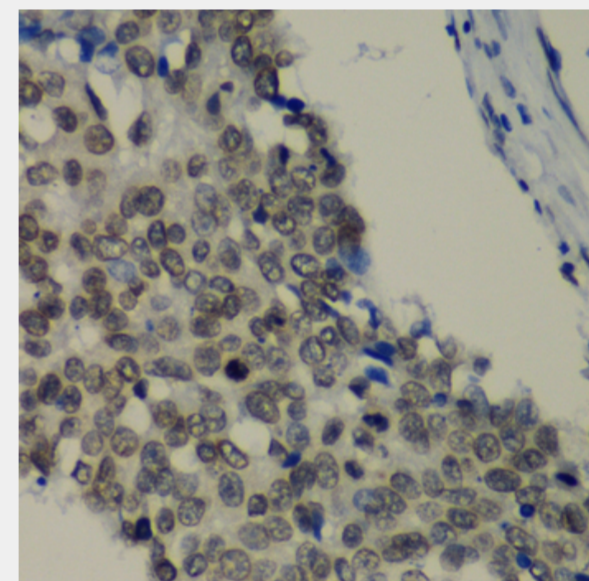
P28347

Product Description

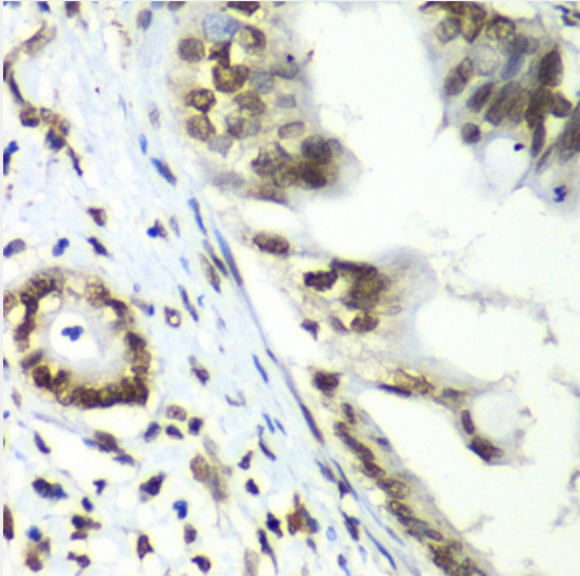
This gene encodes a ubiquitous transcriptional enhancer factor that is a member of the TEA/ATTS domain family. This protein directs the transactivation of a wide variety of genes and, in placental cells, also acts as a transcriptional repressor. Mutations in this gene cause Sveinsson's chorioretinal atrophy. Additional transcript variants have been described but their full-length natures have not been experimentally verified.



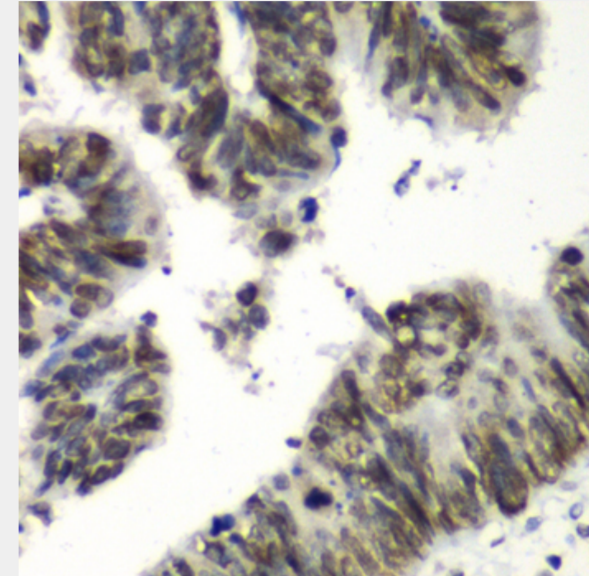
Western blot analysis of extracts of various cell lines, using TEAD1 antibody at 1:1000 dilution. Secondary antibody: HRP Goat Anti-Rabbit IgG (H+L) at 1:10000 dilution. Lysates/proteins: 25ug per lane. Blocking buffer: 3% nonfat dry milk in TBST. Detection: ECL Basic Kit. Exposure time: 120s.



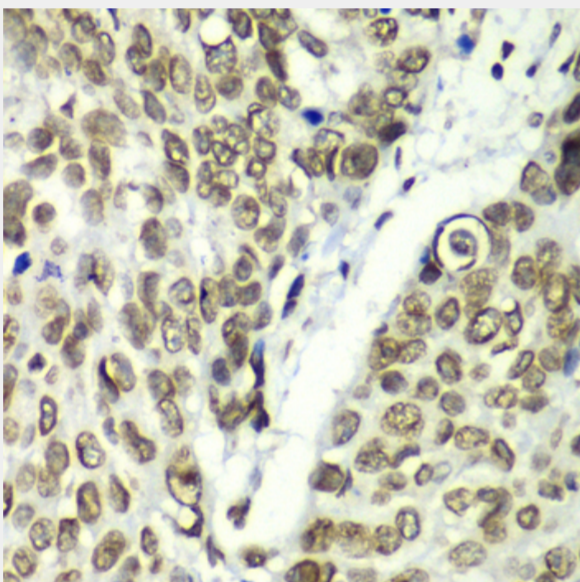
Immunohistochemistry of paraffin-embedded human lung cancer using TEAD1 antibody at dilution of 1:100 (40x lens).



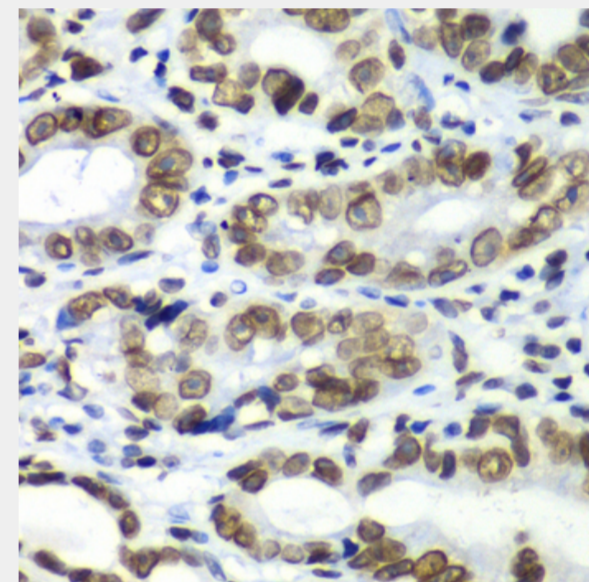
Immunohistochemistry of paraffin-embedded human liver cancer using TEAD1 antibody at dilution of 1:100 (40x lens).



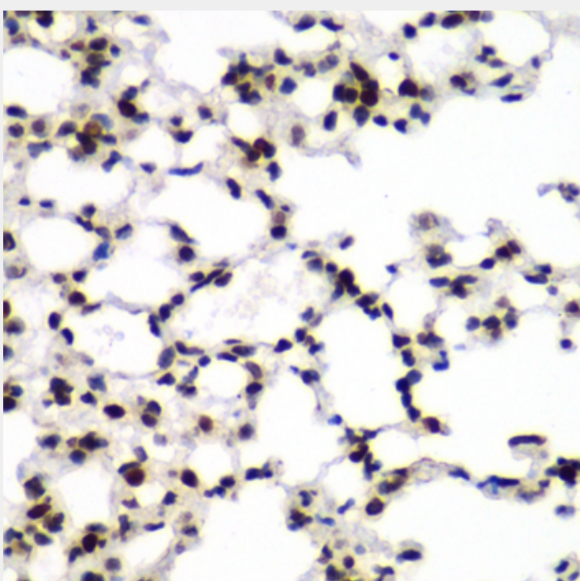
Immunohistochemistry of paraffin-embedded human colon carcinoma using TEAD1 antibody at dilution of 1:100 (40x lens).



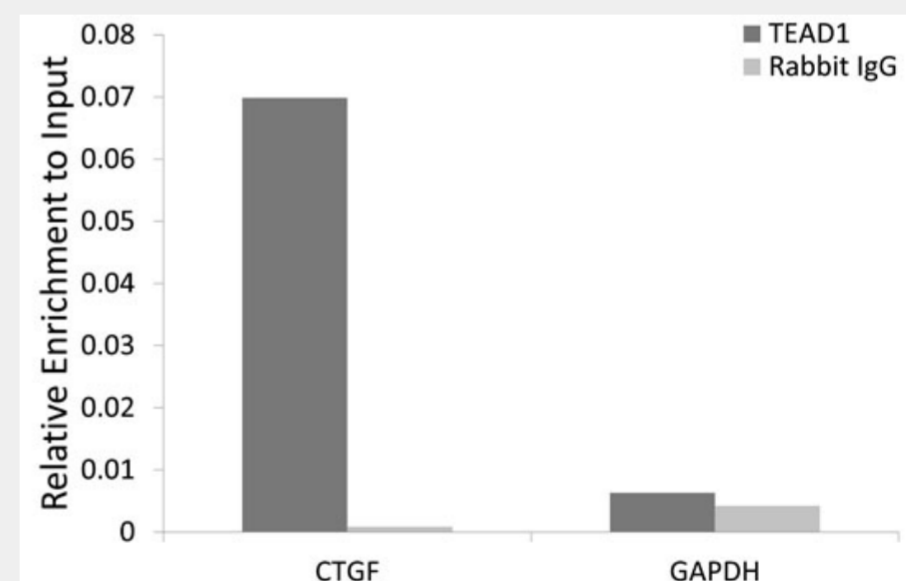
Immunohistochemistry of paraffin-embedded human esophageal cancer using TEAD1 antibody at dilution of 1:100 (40x lens).



Immunohistochemistry of paraffin-embedded human gastric cancer using TEAD1 antibody at dilution of 1:100 (40x lens).



Immunohistochemistry of paraffin-embedded mouse lung using TEAD1 antibody at dilution of 1:100 (40x lens).



Chromatin immunoprecipitation analysis extracts of HeLa cell line, using TEAD1 rabbit polyclonal antibody and rabbit IgG. The amount of immunoprecipitated DNA was checked by quantitative PCR. Histogram was constructed by the ratios of the immunoprecipitated DNA to the input.

All products are for RESEARCH USE ONLY. Not for diagnostic & therapeutic purposes!