

Anti LUC7L2 Antibody

Catalog No: tcsa22711



Available Sizes

Size: 100μl



Specifications

Application:

WB

Species Reactivity:

Human, Mouse

Host Species:

Rabbit

Immunogen / Amino acids:

Recombinant Protein of human LUC7L2

Conjugation:

Unconjugated

Clonality:

Polyclonal

Isotype:

IgG

Form:

Liquid

Storage Buffer:

PBS with 0.02% sodium azide, 50% glycerol, pH7.3.

Recommended Dilution:

WB 1:500 - 1:2000

Storage Instruction:

Store at -20C. Avoid freeze / thaw cycles.

Alternative Names:

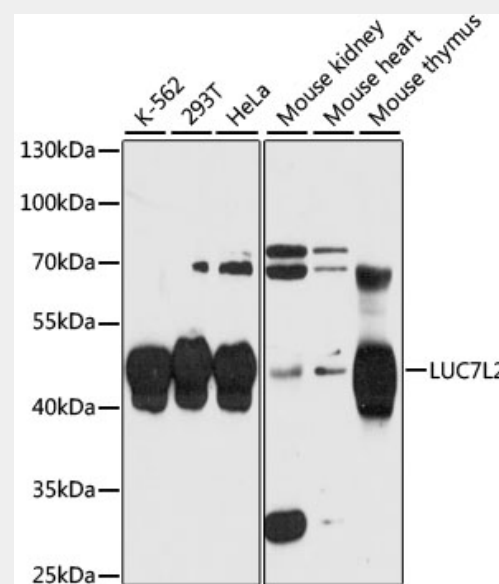
LUC7L2 antibody; Putative RNA-binding protein Luc7-like 2 antibody; LUC7L2 antibody; CGI-59 antibody; CGI-74 antibody

SwissProt:

Q9Y383

Product Description

This gene encodes a protein that contains a C2H2-type zinc finger, coiled-coil region and arginine, serine-rich (RS) domain. A similar protein in mouse interacts with sodium channel modifier 1, and the encoded protein may be involved in the recognition of non-consensus splice donor sites in association with the U1 snRNP spliceosomal subunit. Alternatively spliced transcript variants encoding multiple isoforms have been observed for this gene.



Western blot analysis of extracts of various cell lines, using LUC7L2 antibody at 1:3000 dilution. Secondary antibody: HRP Goat Anti-Rabbit IgG (H+L) at 1:10000 dilution. Lysates/proteins: 25ug per lane. Blocking buffer: 3% nonfat dry milk in TBST. Detection: ECL Enhanced Kit. Exposure time: 30s.

All products are for RESEARCH USE ONLY. Not for diagnostic & therapeutic purposes!