

Anti RPN1 Antibody

Catalog No: tcsa21749



Available Sizes

Size: 100µl



Specifications

Application:

WB, IHC

Species Reactivity:

Human, Mouse, Rat

Host Species:

Rabbit

Immunogen / Amino acids:

Recombinant protein of human RPN1

Conjugation:

Unconjugated

Clonality:

Polyclonal

Isotype:

IgG

Form:

Liquid

Storage Buffer:

PBS with 0.02% sodium azide, 50% glycerol, pH7.3.

Recommended Dilution:

WB 1:500 - 1:2000

IHC 1:50 - 1:200

Storage Instruction:

Store at -20C. Avoid freeze / thaw cycles.

Alternative Names:

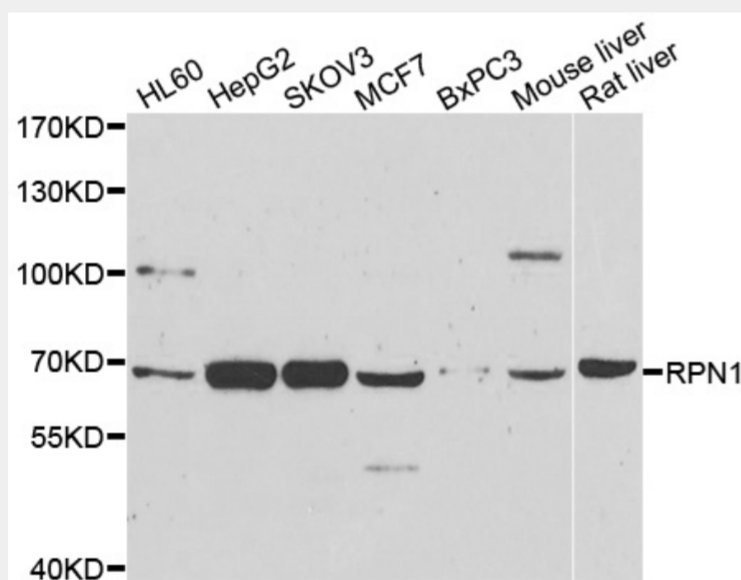
RPN1 antibody; Dolichyl-diphosphooligosaccharide--protein glycosyltransferase subunit 1 antibody; Dolichyl-diphosphooligosaccharide--protein glycosyltransferase 67 kDa subunit antibody; Ribophorin I antibody; RPN-I antibody; Ribophorin-1 an

SwissProt:

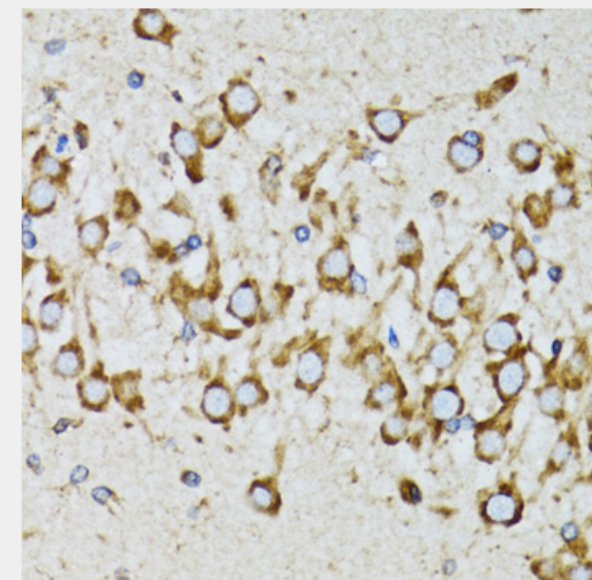
P04843

Product Description

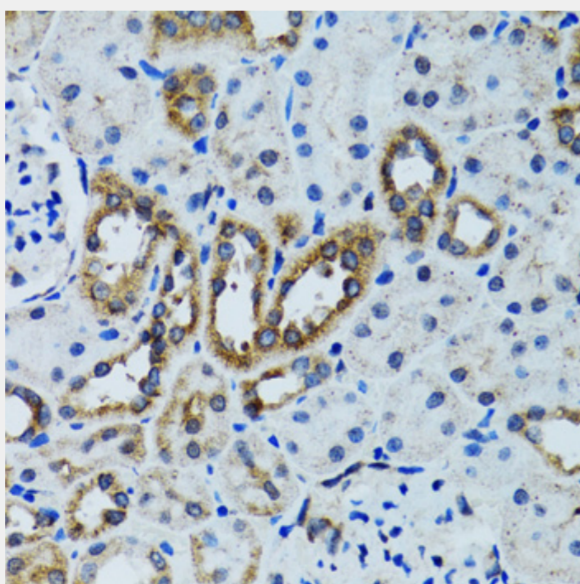
This gene encodes a type I integral membrane protein found only in the rough endoplasmic reticulum. The encoded protein is part of an N-oligosaccharyl transferase complex that links high mannose oligosaccharides to asparagine residues found in the Asn-X-Ser/Thr consensus motif of nascent polypeptide chains. This protein forms part of the regulatory subunit of the 26S proteasome and may mediate binding of ubiquitin-like domains to this proteasome.



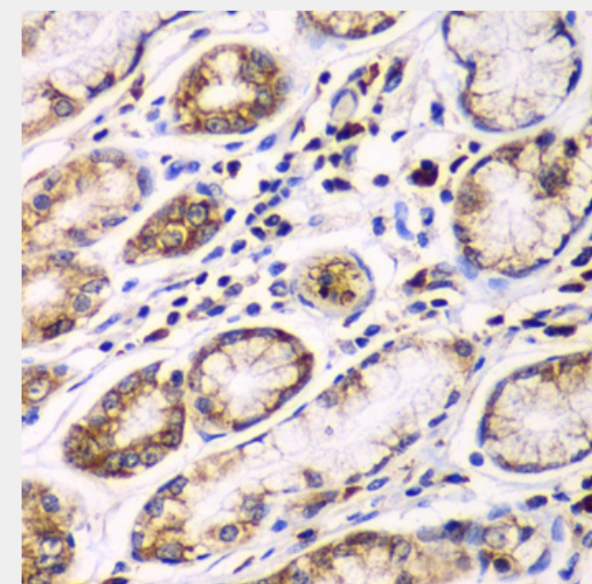
Western blot analysis of extracts of various cell lines, using RPN1 antibody at 1:1000 dilution. Secondary antibody: HRP Goat Anti-Rabbit IgG (H+L) at 1:10000 dilution. Lysates/proteins: 25ug per lane. Blocking buffer: 3% nonfat dry milk in TBST. Detection: ECL Basic Kit. Exposure time: 90s.



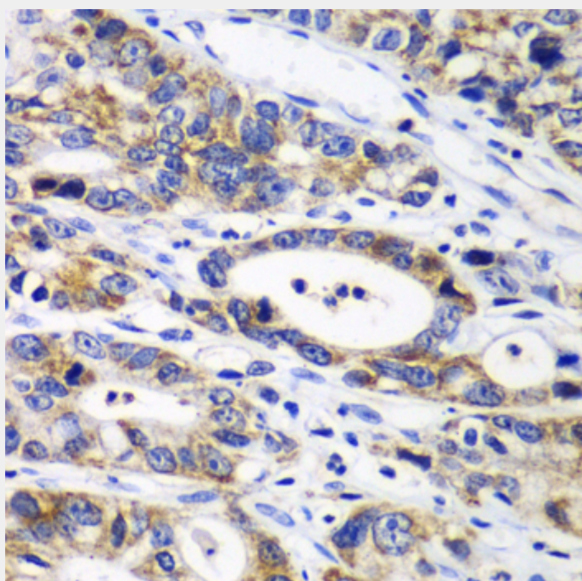
Immunohistochemistry of paraffin-embedded mouse brain using RPN1 antibody at dilution of 1:100 (40x lens).



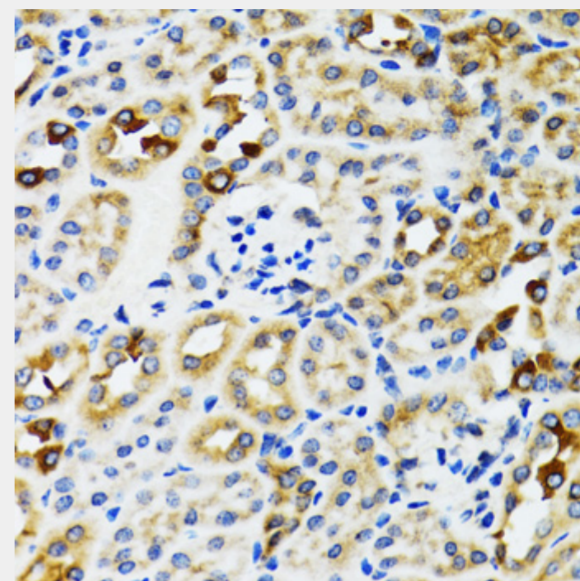
Immunohistochemistry of paraffin-embedded mouse kidney using RPN1 antibody at dilution of 1:100 (40x lens).



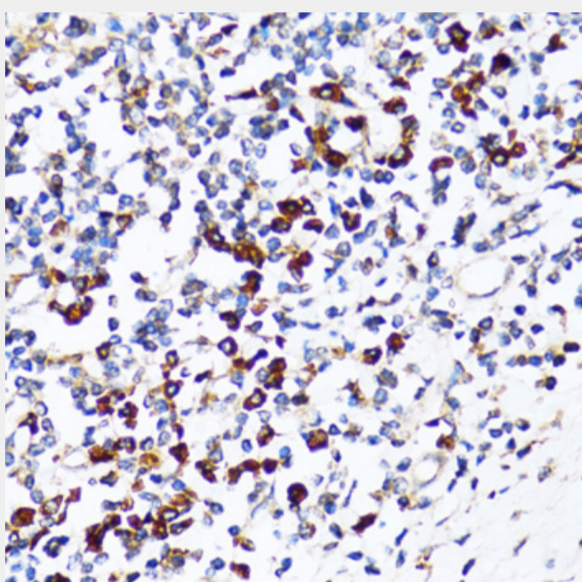
Immunohistochemistry of paraffin-embedded human colon using RPN1 antibody at dilution of 1:100 (40x lens).



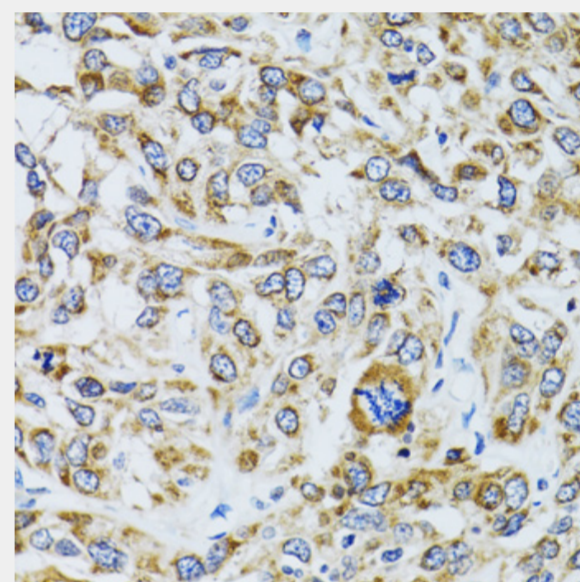
Immunohistochemistry of paraffin-embedded human gastric cancer using RPN1 antibody at dilution of 1:100 (40x lens).



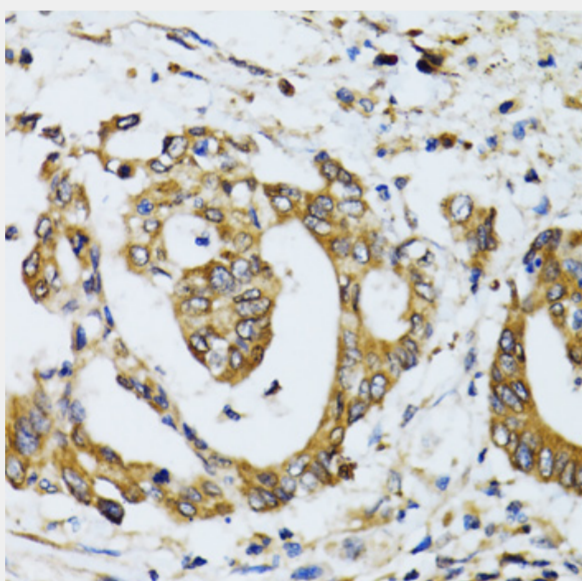
Immunohistochemistry of paraffin-embedded rat kidney using RPN1 antibody at dilution of 1:100 (40x lens).



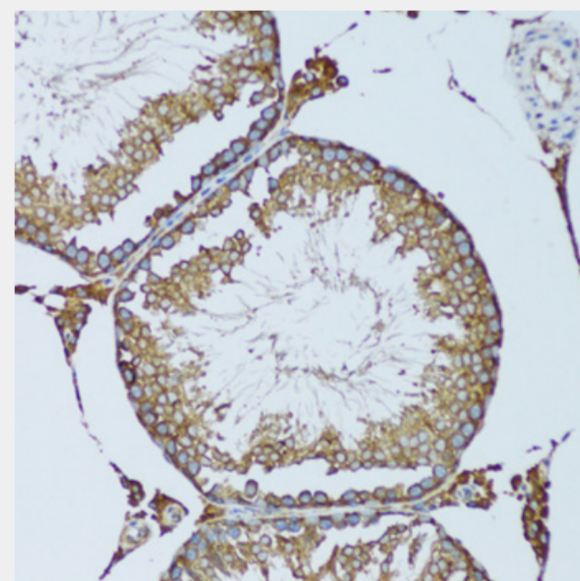
Immunohistochemistry of paraffin-embedded human tonsil using RPN1 antibody at dilution of 1:100 (40x lens).



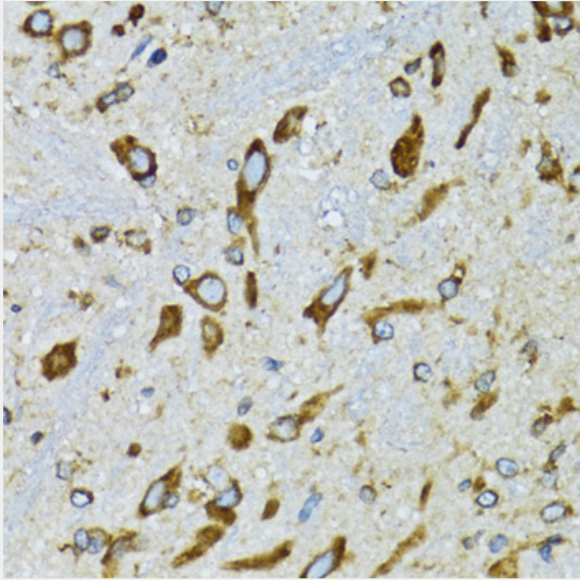
Immunohistochemistry of paraffin-embedded human liver cancer using RPN1 antibody at dilution of 1:100 (40x lens).



Immunohistochemistry of paraffin-embedded human colon carcinoma using RPN1 antibody at dilution of 1:100 (40x lens).



Immunohistochemistry of paraffin-embedded mouse testis using RPN1 antibody at dilution of 1:100 (20x lens).



Immunohistochemistry of paraffin-embedded mouse spinal cord using RPN1 antibody at dilution of 1:100 (40x lens).

All products are for RESEARCH USE ONLY. Not for diagnostic & therapeutic purposes!