

Anti MTOR Antibody

Catalog No: tcsa21294



Available Sizes

Size: 100µl



Specifications

Application:

WB, IHC, IF

Species Reactivity:

Human, Mouse, Rat

Host Species:

Rabbit

Immunogen / Amino acids:

Recombinant protein of human MTOR

Conjugation:

Unconjugated

Clonality:

Polyclonal

Isotype:

IgG

Form:

Liquid

Storage Buffer:

PBS with 0.02% sodium azide, 50% glycerol, pH7.3.

Recommended Dilution:

WB 1:500 - 1:2000

IHC 1:50 - 1:200

IF 1:50 - 1:200

Storage Instruction:

Store at -20C. Avoid freeze / thaw cycles.

Alternative Names:

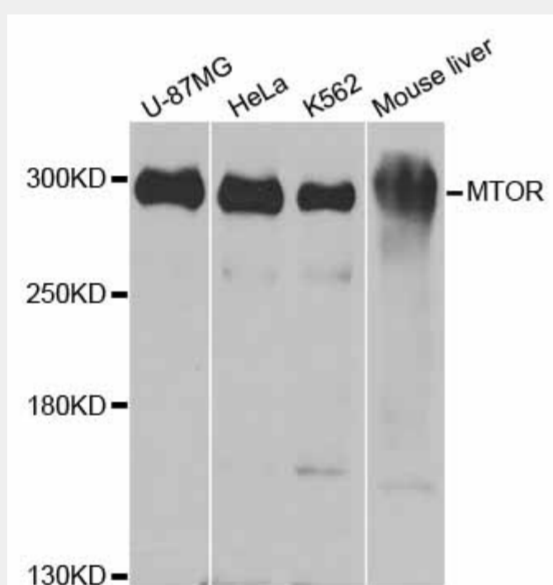
MTOR antibody; Serine/threonine-protein kinase mTOR antibody; MTOR antibody; FRAP antibody; FRAP1 antibody; FRAP2 antibody; RAFT1 antibody; RAPT1 antibody

SwissProt:

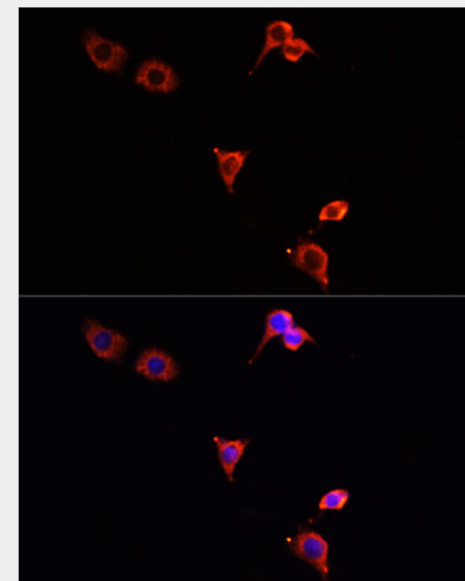
P42345

Product Description

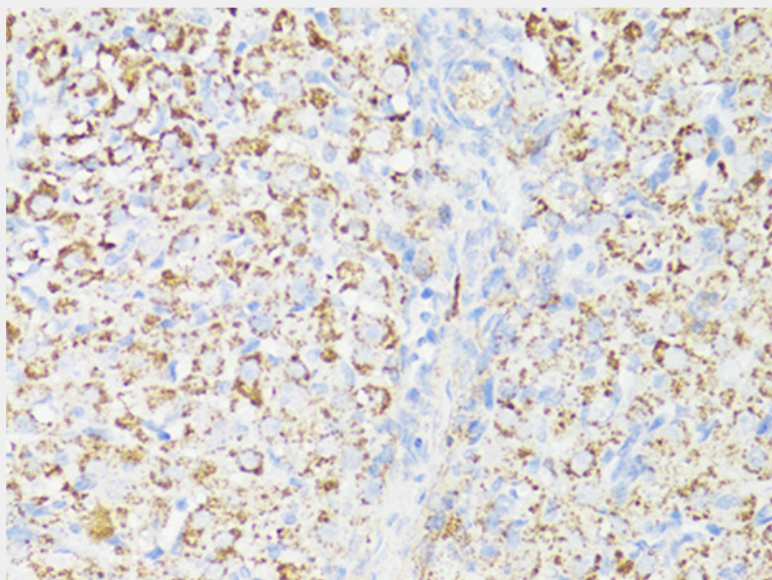
The protein encoded by this gene belongs to a family of phosphatidylinositol kinase-related kinases. These kinases mediate cellular responses to stresses such as DNA damage and nutrient deprivation. This protein acts as the target for the cell-cycle arrest and immunosuppressive effects of the FKBP12-rapamycin complex. The ANGPTL7 gene is located in an intron of this gene.



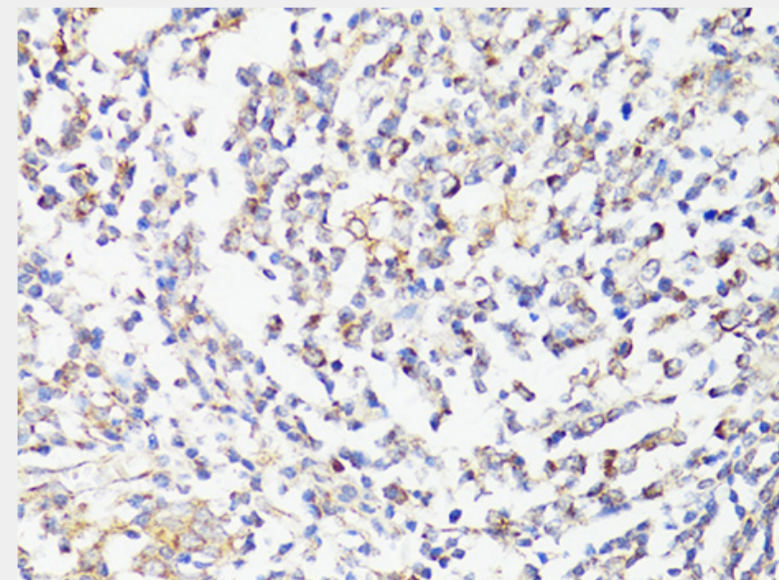
Western blot analysis of extracts of various cell lines, using MTOR antibody at 1:1000 dilution. Secondary antibody: HRP Goat Anti-Rabbit IgG (H+L) at 1:10000 dilution. Lysates/proteins: 25ug per lane. Blocking buffer: 3% nonfat dry milk in TBST. Detection: ECL Basic Kit. Exposure time: 30s.



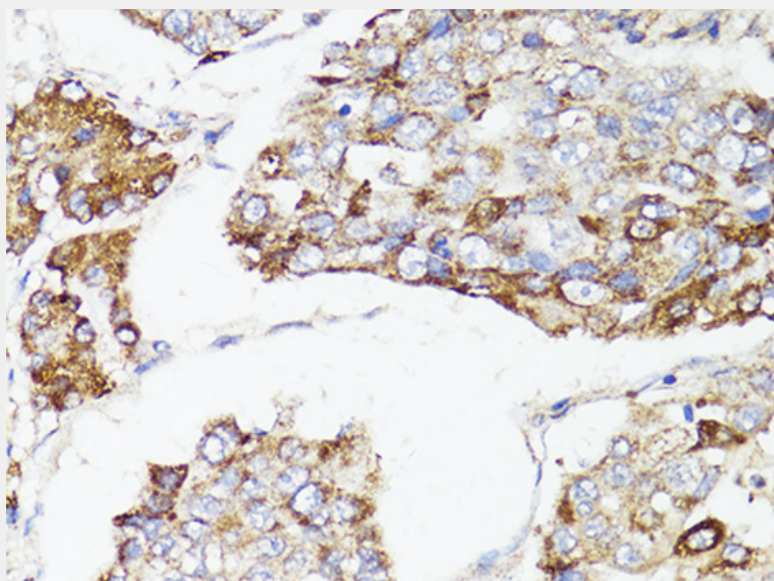
Immunofluorescence analysis of PC-12 cells using MTOR antibody at dilution of 1:100. Blue: DAPI for nuclear staining.



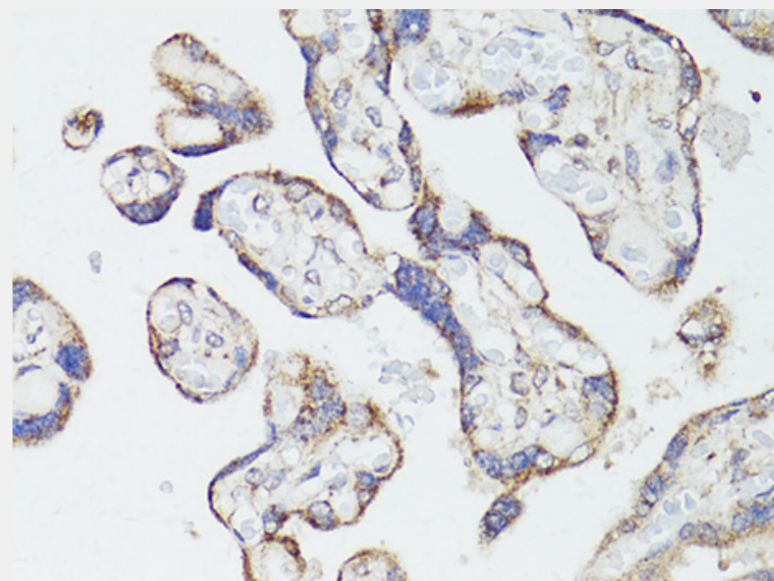
Immunohistochemistry of paraffin-embedded rat ovary using MTOR antibody at dilution of 1:150 (40x lens).



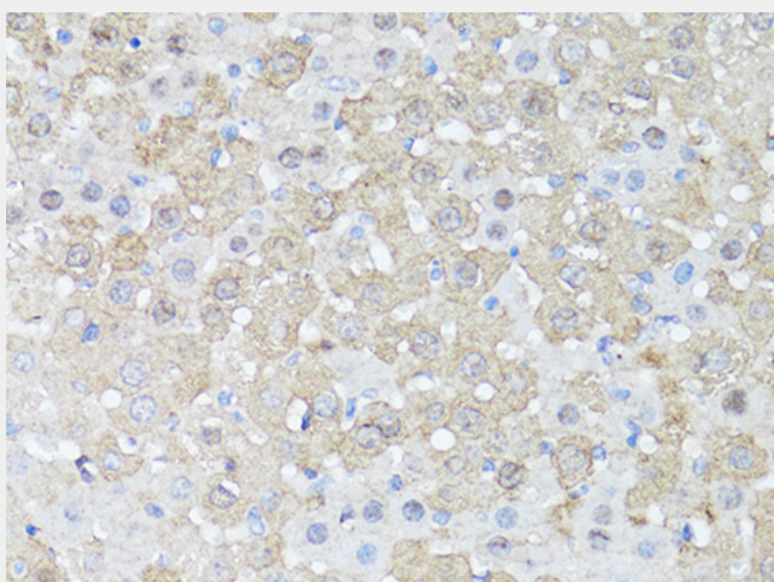
Immunohistochemistry of paraffin-embedded human tonsil using MTOR antibody at dilution of 1:150 (40x lens).



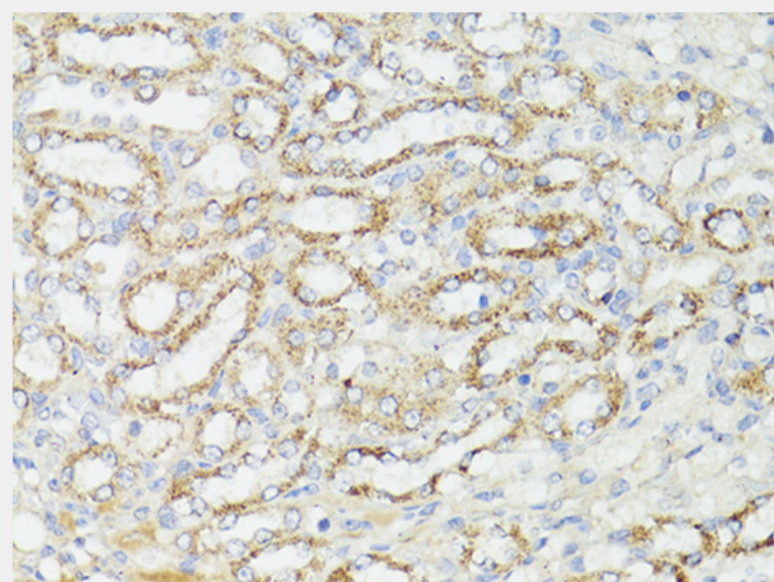
Immunohistochemistry of paraffin-embedded human liver cancer using MTOR antibody at dilution of 1:150 (40x lens).



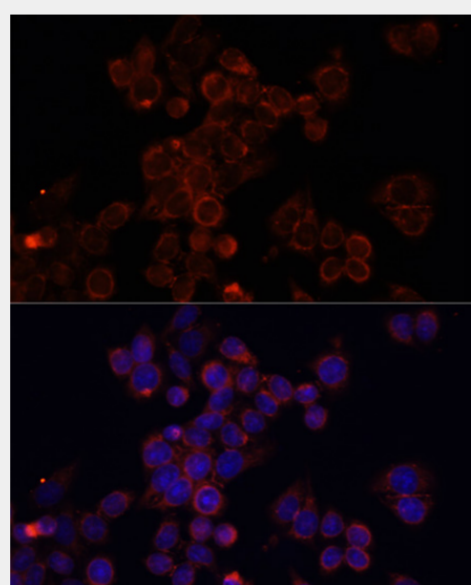
Immunohistochemistry of paraffin-embedded human placenta using MTOR antibody at dilution of 1:150 (40x lens).



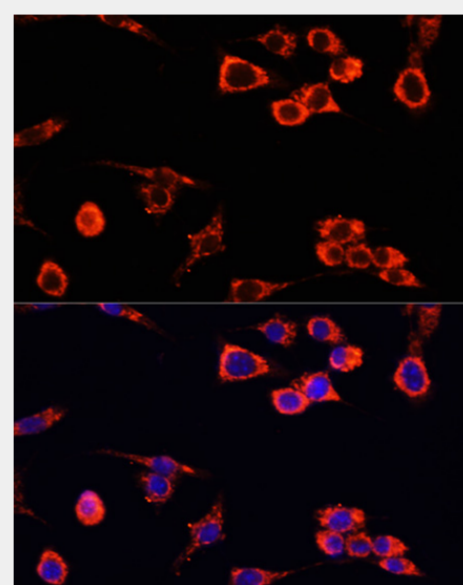
Immunohistochemistry of paraffin-embedded mouse liver using MTOR antibody at dilution of 1:150 (40x lens).



Immunohistochemistry of paraffin-embedded mouse kidney using MTOR antibody at dilution of 1:150 (40x lens).



Immunofluorescence analysis of HeLa cells using MTOR antibody at dilution of 1:100. Blue: DAPI for nuclear staining.



Immunofluorescence analysis of NIH/3T3 cells using MTOR antibody at dilution of 1:100. Blue: DAPI for nuclear staining.

All products are for RESEARCH USE ONLY. Not for diagnostic & therapeutic purposes!