

Anti SMAD9 Antibody

Catalog No: tcsa20808



Available Sizes

Size: 100µl



Specifications

Application:

WB, IHC, IF

Species Reactivity:

Human, Mouse, Rat

Host Species:

Rabbit

Immunogen / Amino acids:

Recombinant protein of human SMAD9

Conjugation:

Unconjugated

Clonality:

Polyclonal

Isotype:

IgG

Form:

Liquid

Storage Buffer:

PBS with 0.02% sodium azide, 50% glycerol, pH7.3.

Recommended Dilution:

WB 1:500 - 1:2000

IHC 1:50 - 1:200

IF 1:50 - 1:200

Storage Instruction:

Store at -20C. Avoid freeze / thaw cycles.

Alternative Names:

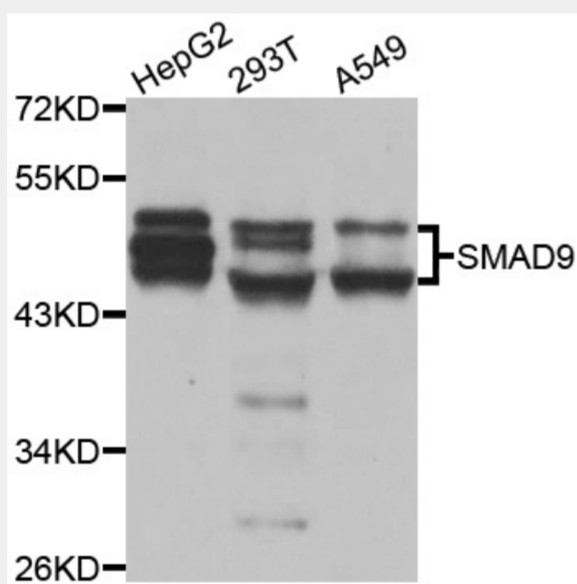
SMAD9 antibody; Mothers against decapentaplegic homolog 9 antibody; MAD homolog 9 antibody; Mothers against DPP homolog 9 antibody; Madh6 antibody; SMAD family member 9 antibody; SMAD 9 antibody; Smad9 antibody; SMAD9 antibody;

SwissProt:

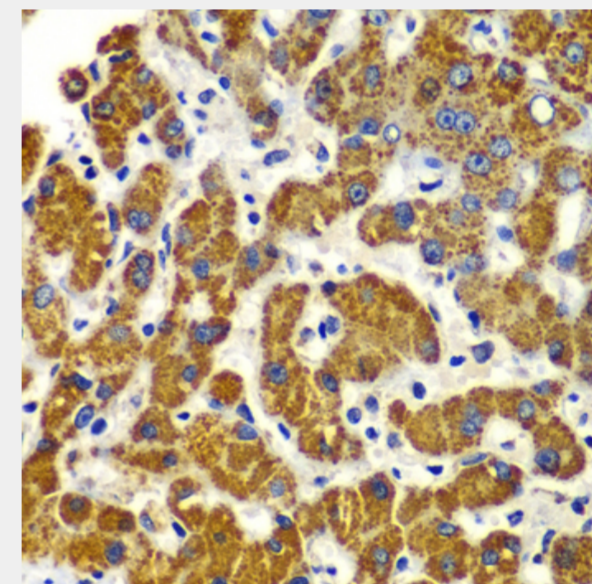
O15198

Product Description

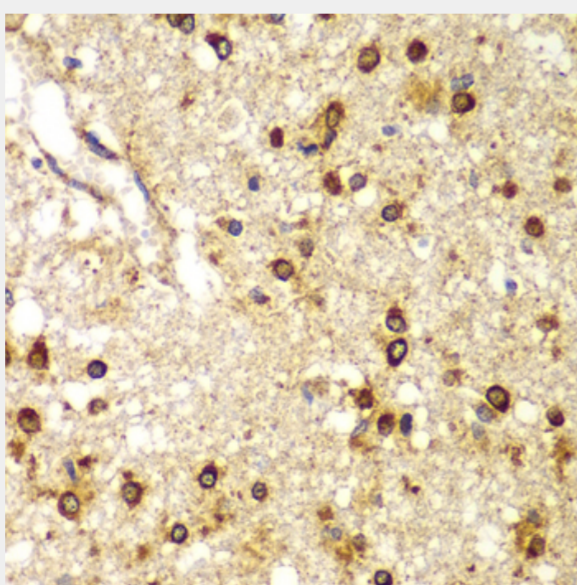
The protein encoded by this gene is a member of the SMAD family, which transduces signals from TGF-beta family members. The encoded protein is activated by bone morphogenetic proteins and interacts with SMAD4. Two transcript variants encoding different isoforms have been found for this gene.



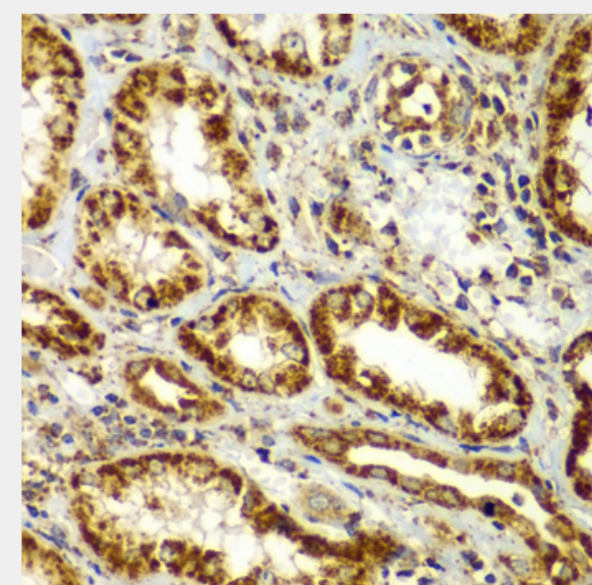
Western blot analysis of extracts of various cell lines, using SMAD9 antibody at 1:1000 dilution. Secondary antibody: HRP Goat Anti-Rabbit IgG (H+L) at 1:10000 dilution. Lysates/proteins: 25ug per lane. Blocking buffer: 3% nonfat dry milk in TBST. Detection: ECL Basic Kit. Exposure time: 30s.



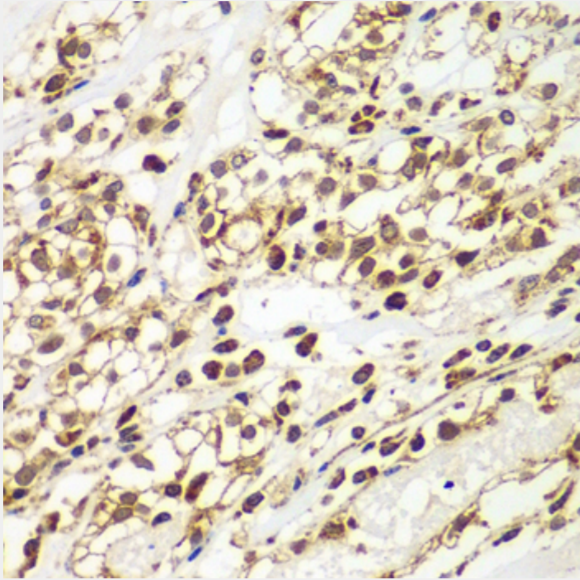
Immunohistochemistry of paraffin-embedded human liver injury using SMAD9 antibody at dilution of 1:100 (40x lens).



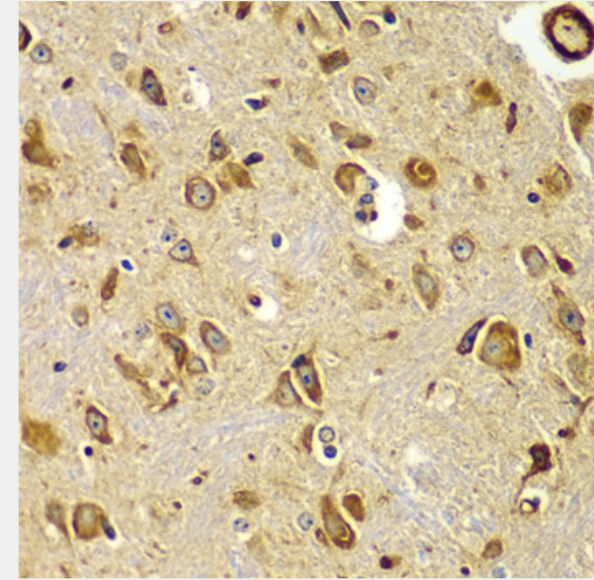
Immunohistochemistry of paraffin-embedded human brain cancer using SMAD9 antibody at dilution of 1:100 (40x lens).



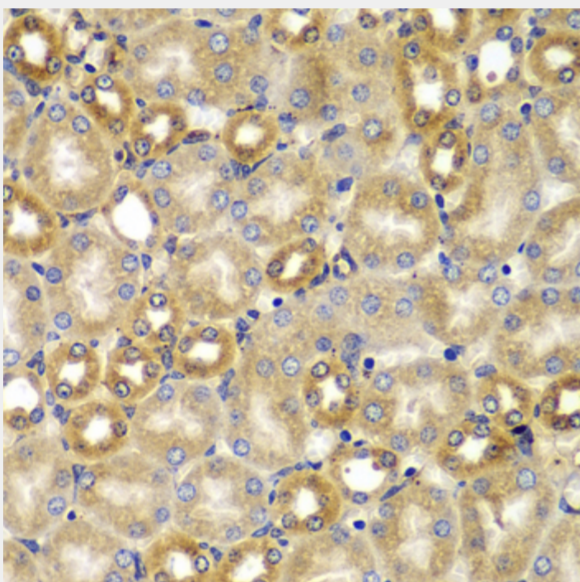
Immunohistochemistry of paraffin-embedded human kidney using SMAD9 antibody at dilution of 1:100 (40x lens).



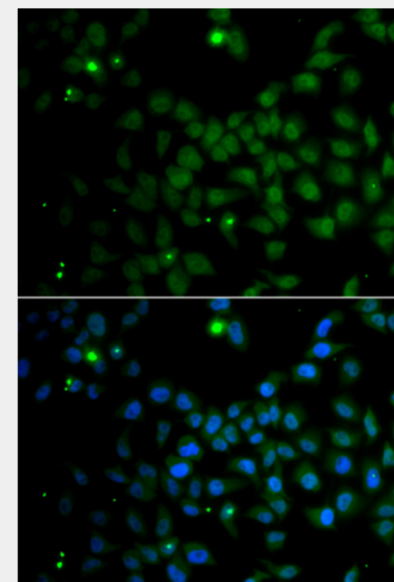
Immunohistochemistry of paraffin-embedded human kidney cancer using SMAD9 antibody at dilution of 1:100 (40x lens).



Immunohistochemistry of paraffin-embedded mouse brain using SMAD9 antibody at dilution of 1:100 (40x lens).



Immunohistochemistry of paraffin-embedded mouse kidney using SMAD9 antibody at dilution of 1:100 (40x lens).



Immunofluorescence analysis of A549 cells using SMAD9 antibody. Blue: DAPI for nuclear staining.

All products are for RESEARCH USE ONLY. Not for diagnostic & therapeutic purposes!