

Anti Phospho BCL2 S70 Antibody

Catalog No: tcsa20526



Available Sizes

Size: 100μl



Specifications

Application:

WB, IF

Species Reactivity:

Human

Host Species:

Rabbit

Immunogen / Amino acids:

A phospho specific peptide corresponding to residues surrounding S70 of human Bcl2

Conjugation:

Unconjugated

Clonality:

Polyclonal

Isotype:

IgG

Form:

Liquid

Storage Buffer:

PBS with 0.02% sodium azide, 50% glycerol, pH7.3.

Recommended Dilution:

WB 1:500 - 1:2000

IF 1:50 - 1:200

Storage Instruction:

Store at -20C. Avoid freeze / thaw cycles.

Alternative Names:

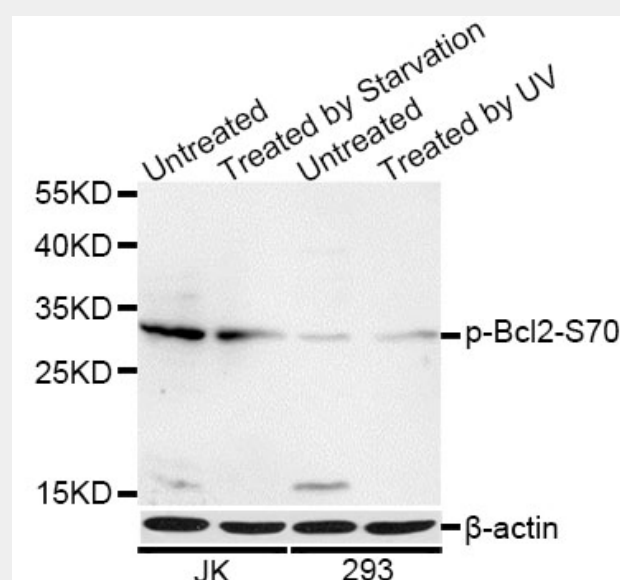
BCL2 antibody; Apoptosis regulator Bcl-2 antibody; BCL2 antibody

SwissProt:

P10415

Product Description

This gene encodes an integral outer mitochondrial membrane protein that blocks the apoptotic death of some cells such as lymphocytes. Constitutive expression of BCL2, such as in the case of translocation of BCL2 to Ig heavy chain locus, is thought to be the cause of follicular lymphoma. Alternative splicing results in multiple transcript variants.



Western blot analysis of extracts of Jurkat and 293 cells, using Phospho-Bcl2 -S70 antibody at 1:1000 dilution. Jurkat cells were treated by serum-starvation overnight. 293 cells were treated by UV for 15-30 minutes. Secondary antibody: HRP Goat Anti-Rabbit IgG (H+L) at 1:10000 dilution. Lysates/proteins: 25ug per lane. Blocking buffer: 3% BSA.

All products are for RESEARCH USE ONLY. Not for diagnostic & therapeutic purposes!