

Anti RSRC1 Antibody

Catalog No: tcsa20485



Available Sizes

Size: 100µl



Specifications

Application:

WB, IHC, IF

Species Reactivity:

Human, Mouse, Rat

Host Species:

Rabbit

Immunogen / Amino acids:

Recombinant protein of human RSRC1

Conjugation:

Unconjugated

Clonality:

Polyclonal

Isotype:

IgG

Form:

Liquid

Storage Buffer:

PBS with 0.02% sodium azide, 50% glycerol, pH7.3.

Recommended Dilution:

WB 1:500 - 1:2000

IHC 1:50 - 1:100

IF 1:50 - 1:100

Storage Instruction:

Store at -20C. Avoid freeze / thaw cycles.

Alternative Names:

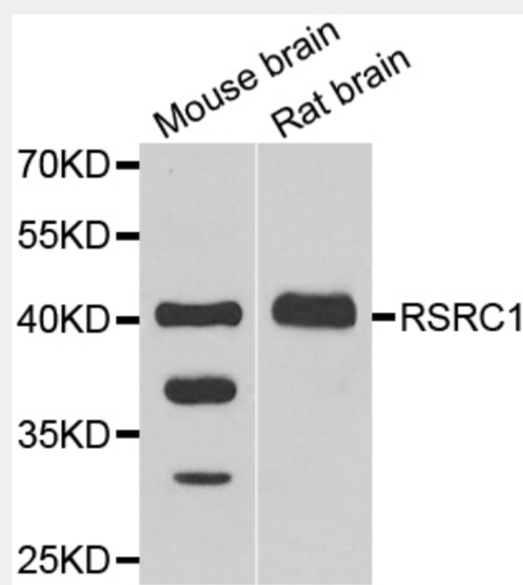
RSRC1 antibody; Serine/Arginine-related protein 53 antibody; SRrp53 antibody; Arginine/serine-rich coiled-coil protein 1 antibody; RSRC1 antibody; SRRP53 antibody; BM-011 antibody

SwissProt:

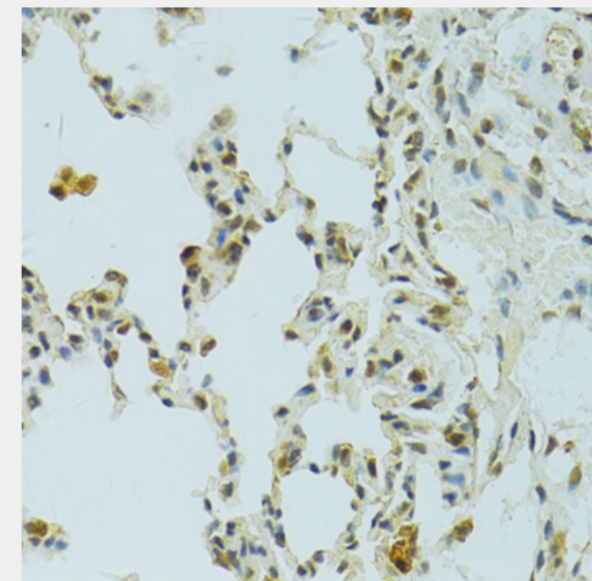
Q96IZ7

Product Description

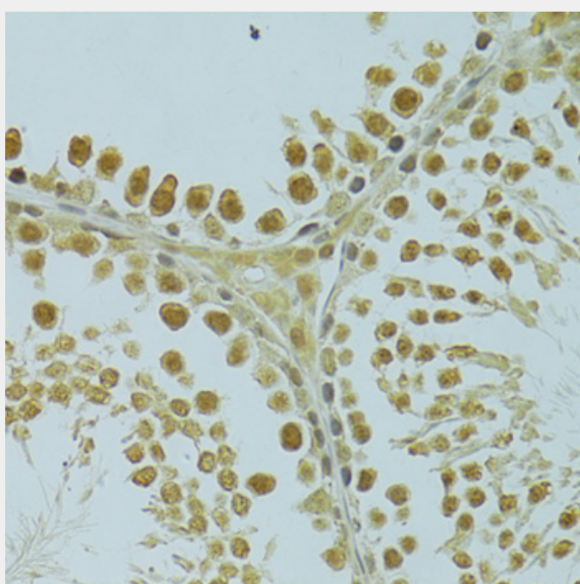
This gene encodes a member of the serine and arginine rich-related protein family. The encoded protein is involved in both constitutive and alternative mRNA splicing. This gene may be associated with schizophrenia. A pseudogene of this gene is located on chromosome 9. Alternative splicing results in multiple transcript variants encoding different isoforms.



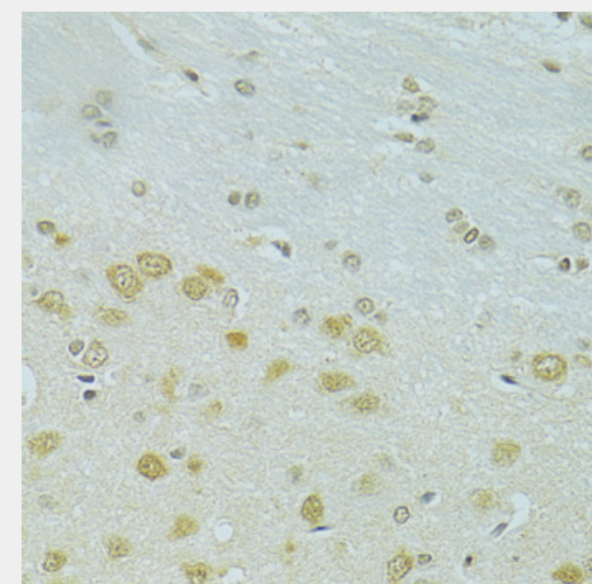
Western blot analysis of extracts of various cell lines, using RSRC1 antibody at 1:1000 dilution. Secondary antibody: HRP Goat Anti-Rabbit IgG (H+L) at 1:10000 dilution. Lysates/proteins: 25ug per lane. Blocking buffer: 3% nonfat dry milk in TBST. Detection: ECL Basic Kit. Exposure time: 90s.



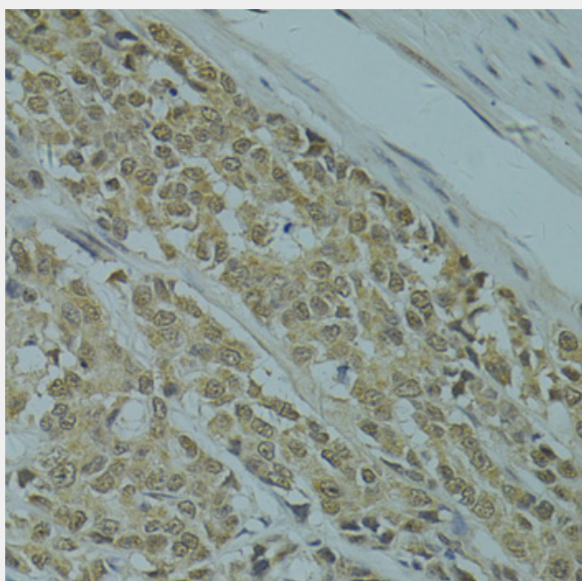
Immunohistochemistry of paraffin-embedded rat lung using RSRC1 antibody at dilution of 1:100 (40x lens).



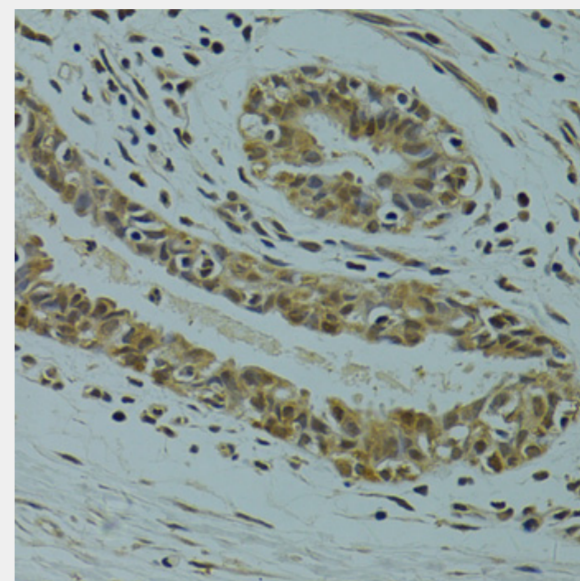
Immunohistochemistry of paraffin-embedded rat testis using RSRC1 antibody at dilution of 1:100 (40x lens).



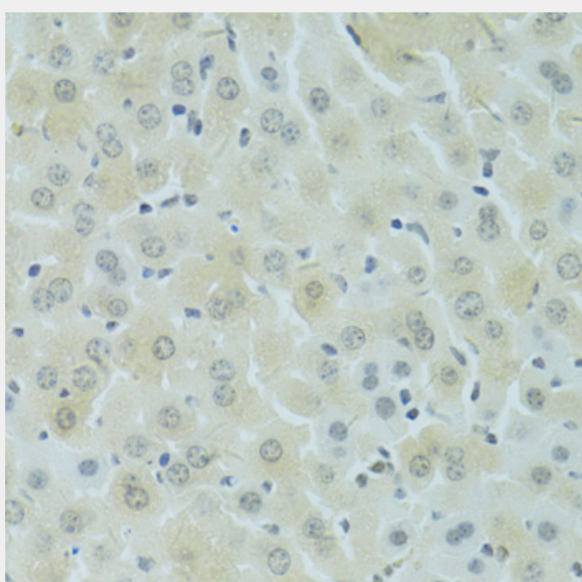
Immunohistochemistry of paraffin-embedded rat brain using RSRC1 antibody at dilution of 1:100 (40x lens).



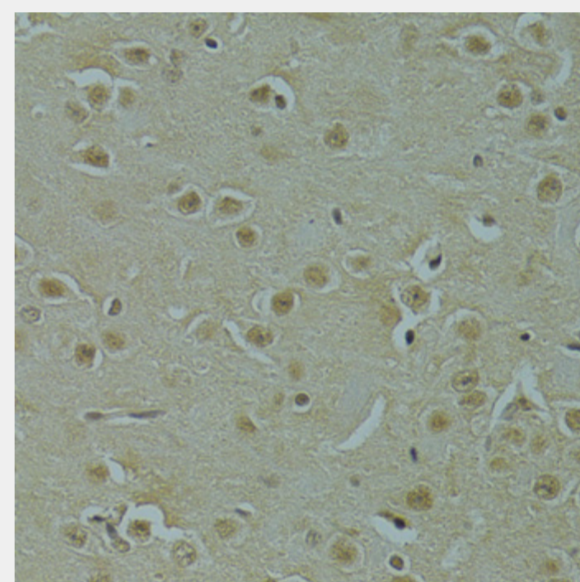
Immunohistochemistry of paraffin-embedded human colon carcinoma using RSRC1 antibody at dilution of 1:100 (40x lens).



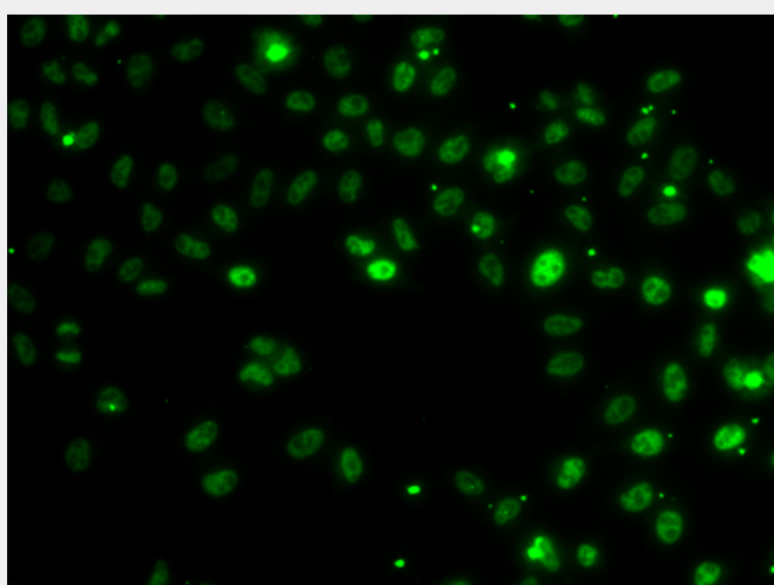
Immunohistochemistry of paraffin-embedded human breast cancer using RSRC1 antibody at dilution of 1:100 (40x lens).



Immunohistochemistry of paraffin-embedded mouse liver using RSRC1 antibody at dilution of 1:100 (40x lens).



Immunohistochemistry of paraffin-embedded mouse brain using RSRC1 antibody at dilution of 1:100 (40x lens).



Immunofluorescence analysis of MCF-7 cells using RSRC1 antibody.

All products are for RESEARCH USE ONLY. Not for diagnostic & therapeutic purposes!