

# Anti MAP1LC3B Antibody

Catalog No: tcsa20473



## Available Sizes

**Size:** 100μl



## Specifications

**Application:**

WB, IHC, IF

**Species Reactivity:**

Human, Mouse, Rat, Pig

**Host Species:**

Rabbit

**Immunogen / Amino acids:**

A synthetic peptide of human MAP1LC3B

**Conjugation:**

Unconjugated

**Clonality:**

Polyclonal

**Isotype:**

IgG

**Form:**

Liquid

**Storage Buffer:**

PBS with 0.02% sodium azide, 50% glycerol, pH7.3.

**Recommended Dilution:**

WB 1:500 - 1:2000

IHC 1:50 - 1:200

IF 1:50 - 1:200

### Storage Instruction:

Store at -20C. Avoid freeze / thaw cycles.

### Alternative Names:

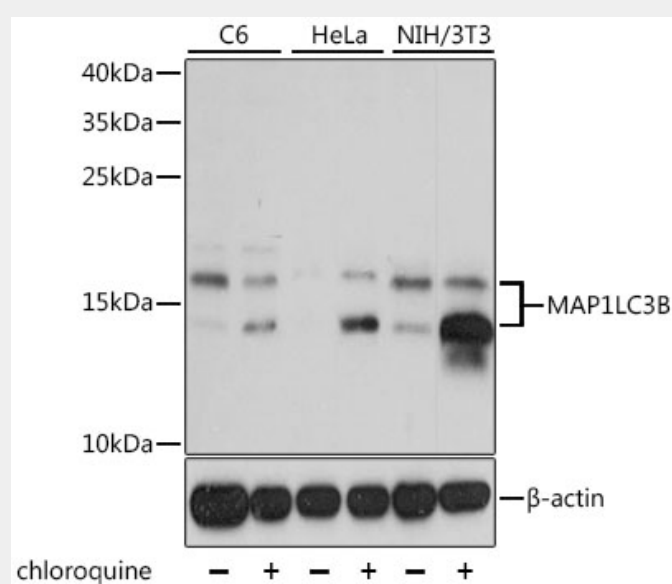
MAP1LC3B antibody; Microtubule-associated proteins 1A/1B light chain 3B antibody; Autophagy-related protein LC3 B antibody; Autophagy-related ubiquitin-like modifier LC3 B antibody; MAP1 light chain 3-like protein 2 antibody; MAP1A/MAP1B li

### SwissProt:

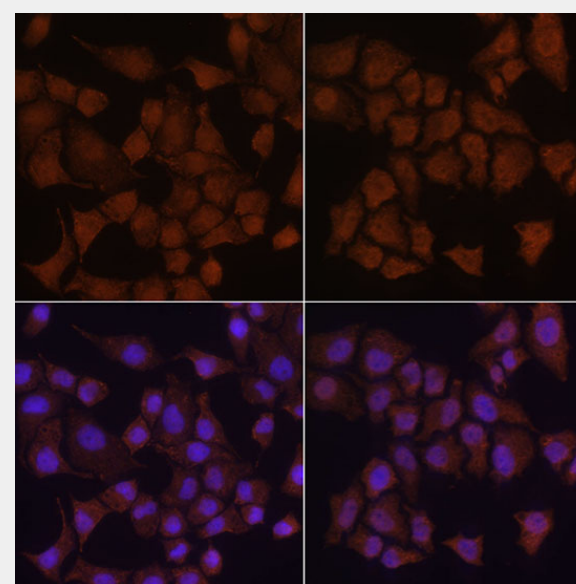
Q9GZQ8

## Product Description

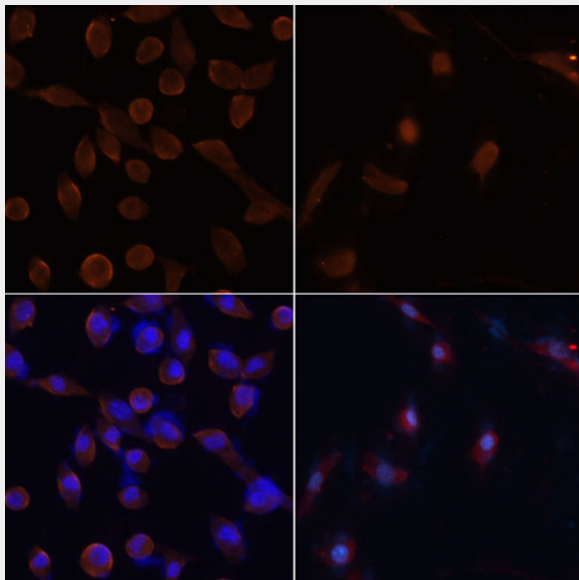
The product of this gene is a subunit of neuronal microtubule-associated MAP1A and MAP1B proteins, which are involved in microtubule assembly and important for neurogenesis. Studies on the rat homolog implicate a role for this gene in autophagy, a process that involves the bulk degradation of cytoplasmic component.



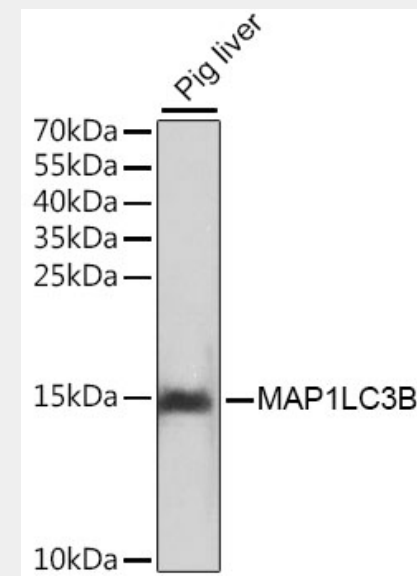
Western blot analysis of extracts of various cell lines, using MAP1LC3B antibody at 1:1000 dilution. C6 cells were treated by Chloroquine (50  $\mu$ M) for 20 hours. HeLa cells were treated by Chloroquine (50  $\mu$ M) for 20 hours. NIH/3T3 cells were treated by Chloroquine (50  $\mu$ M) for 20 hours. Secondary antibody: HRP Goat Anti-Rabbit IgG (H+L) at 1:10000 dilution. Lysates/proteins: 25ug per lane. Blocking buffer: 3% nonfat dry milk in TBST. Detection: ECL Basic Kit. Exposure time: 10s.



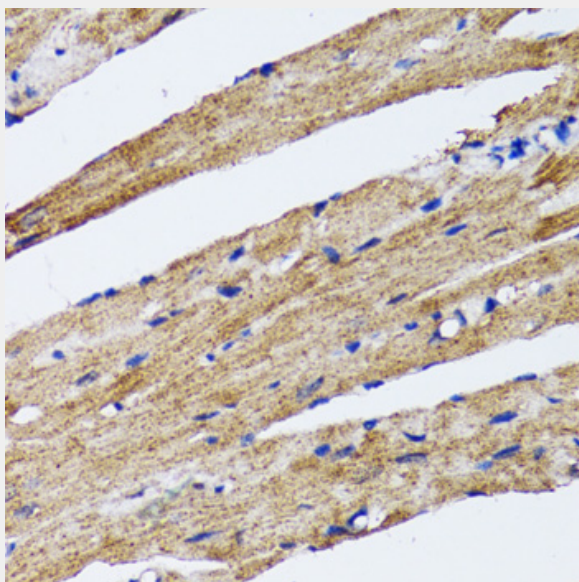
Immunofluorescence analysis of HeLa cells using MAP1LC3B antibody at dilution of 1:100. HeLa cells were treated by Chloroquine (50  $\mu$ M) for 20 hours(left). Blue: DAPI for nuclear staining.



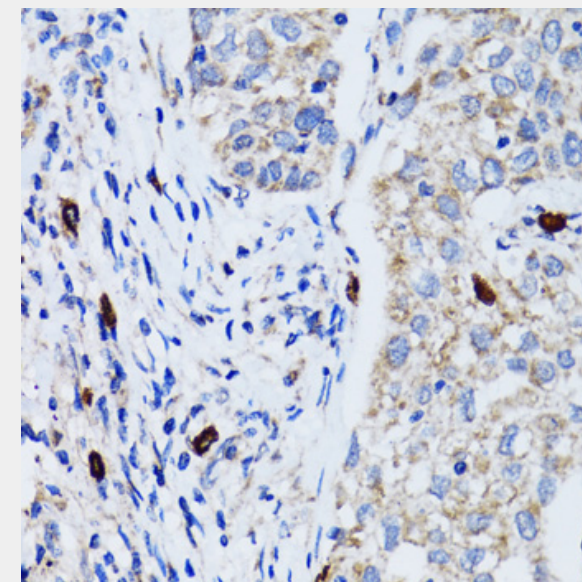
Immunofluorescence analysis of NIH/3T3 cells using MAP1LC3B antibody at dilution of 1:100. NIH/3T3 cells were treated by Chloroquine (50  $\mu$ M) for 20 hours(left). Blue: DAPI for nuclear staining.



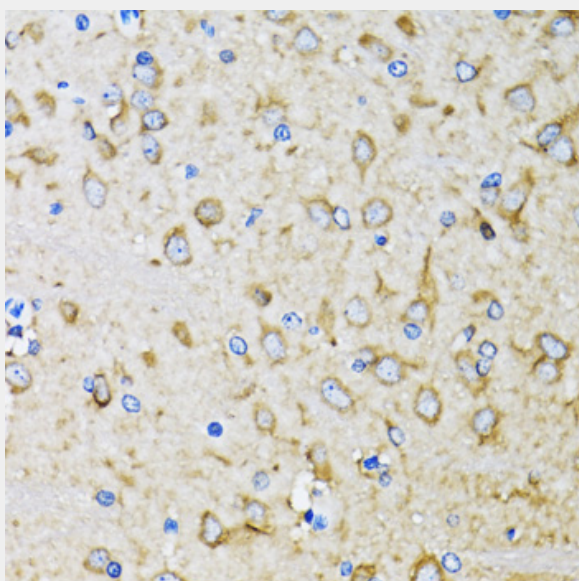
Western blot analysis of extracts of pig liver, using MAP1LC3B antibody. Secondary antibody: HRP Goat Anti-Rabbit IgG (H+L) at 1:10000 dilution. Lysates/proteins: 25ug per lane. Blocking buffer: 3% nonfat dry milk in TBST.



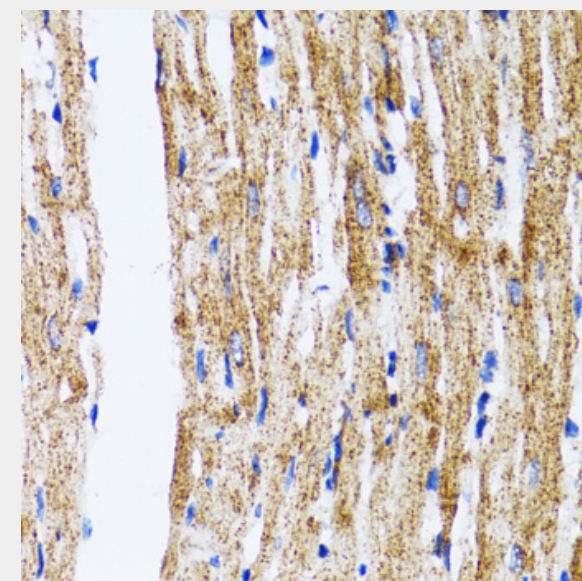
Immunohistochemistry of paraffin-embedded rat heart using MAP1LC3B antibody at dilution of 1:100 (40x lens).



Immunohistochemistry of paraffin-embedded human lung cancer using MAP1LC3B antibody at dilution of 1:100 (40x lens).

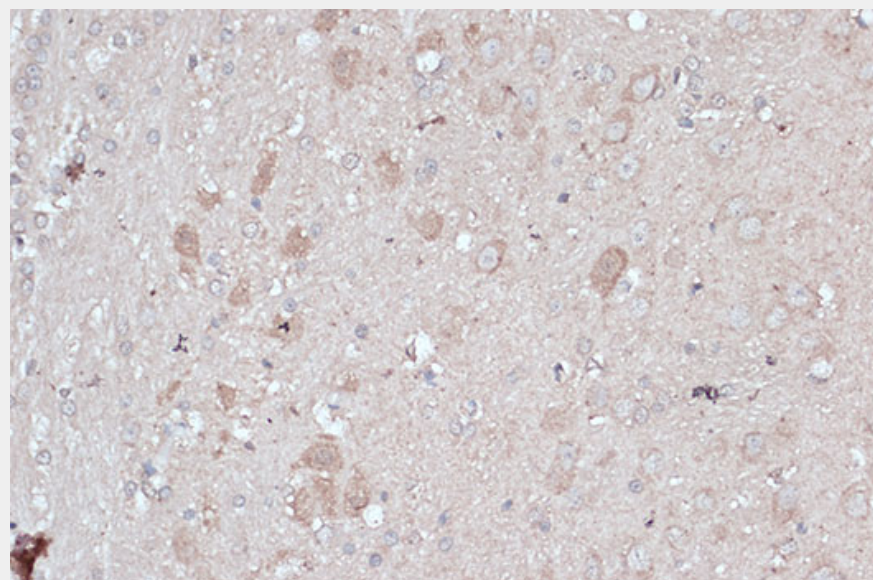


Immunohistochemistry of paraffin-embedded mouse brain using MAP1LC3B antibody at dilution of 1:100 (40x lens).

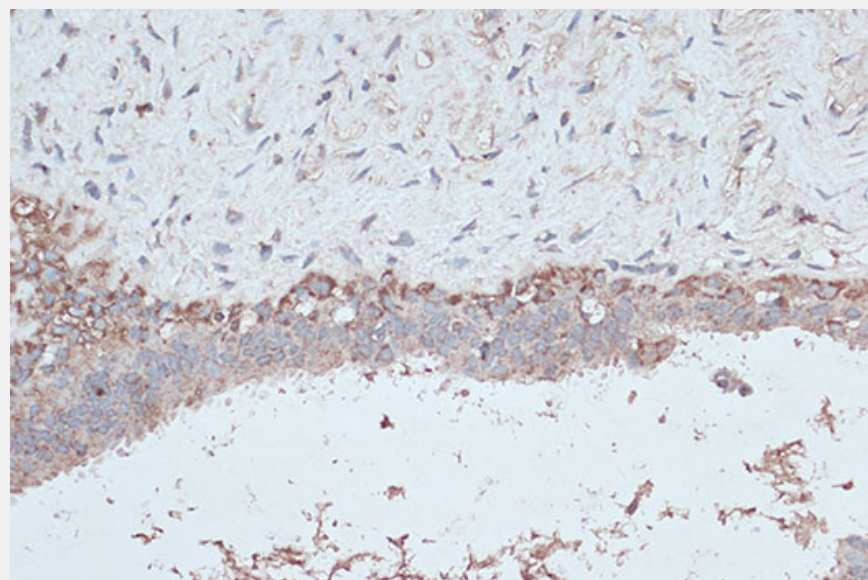


Immunohistochemistry of paraffin-embedded mouse heart using MAP1LC3B antibody at dilution of 1:100 (40x lens).

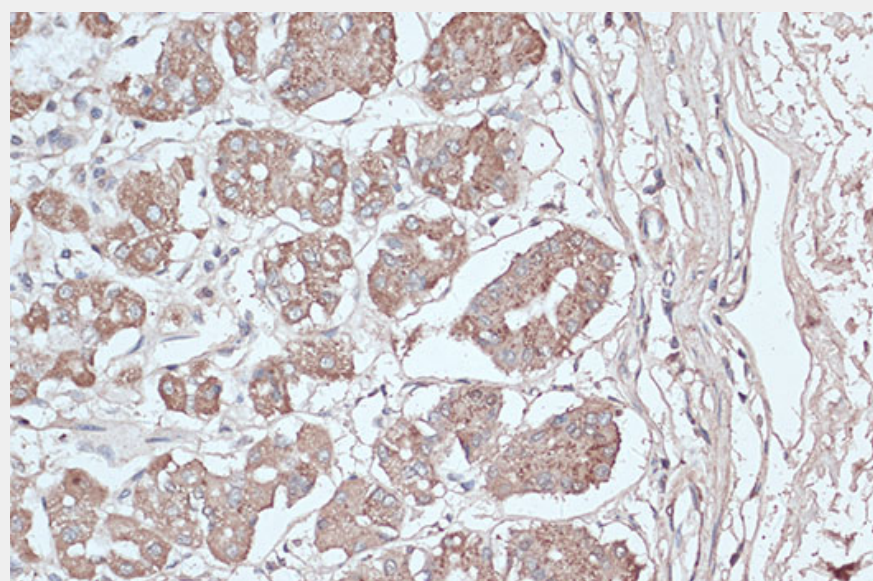




Immunohistochemistry of paraffin-embedded rat brain using MAP1LC3B antibody at dilution of 1:100 (40x lens).



Immunohistochemistry of paraffin-embedded human breast cancer using MAP1LC3B antibody at dilution of 1:100 (40x lens).



Immunohistochemistry of paraffin-embedded human stomach using MAP1LC3B antibody at dilution of 1:100 (40x lens).

All products are for RESEARCH USE ONLY. Not for diagnostic & therapeutic purposes!