

Anti CCAR2 Antibody

Catalog No: tcsa20409



Available Sizes

Size: 100μl



Specifications

Application:

WB, IHC, IF

Species Reactivity:

Human, Mouse, Rat

Host Species:

Rabbit

Immunogen / Amino acids:

Recombinant protein of human CCAR2

Conjugation:

Unconjugated

Clonality:

Polyclonal

Isotype:

IgG

Form:

Liquid

Storage Buffer:

PBS with 0.02% sodium azide, 50% glycerol, pH7.3.

Recommended Dilution:

WB 1:500 - 1:2000

IHC 1:50 - 1:200

IF 1:50 - 1:200

Storage Instruction:

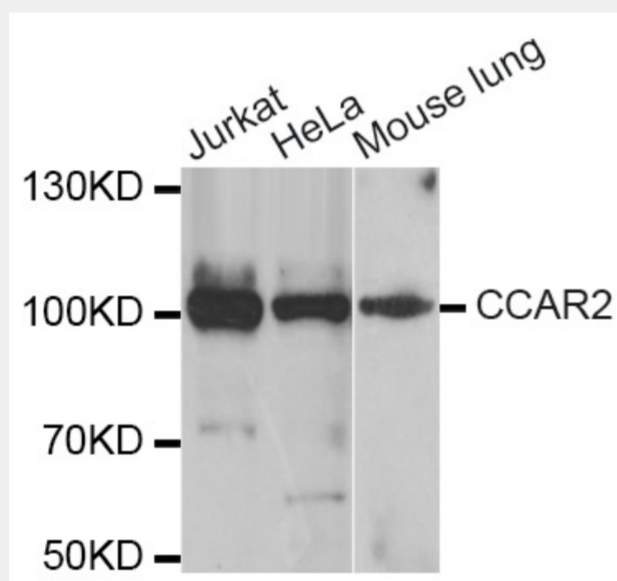
Store at -20C. Avoid freeze / thaw cycles.

Alternative Names:

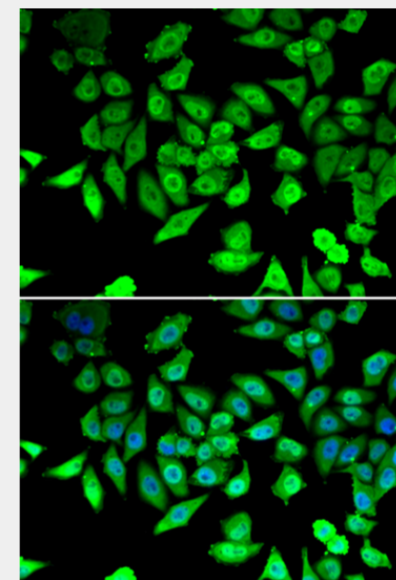
CCAR2 antibody; Cell cycle and apoptosis regulator protein 2 antibody; Cell division cycle and apoptosis regulator protein 2 antibody; DBIRD complex subunit KIAA1967 antibody; Deleted in breast cancer gene 1 protein antibody; DBC-1 antibody

SwissProt:

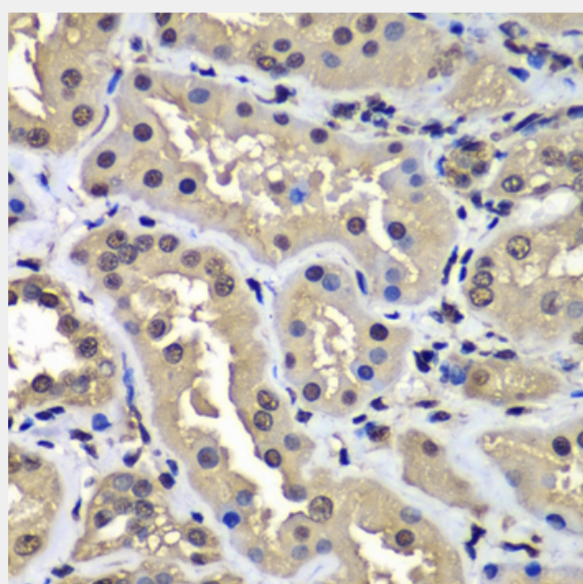
Q8N163



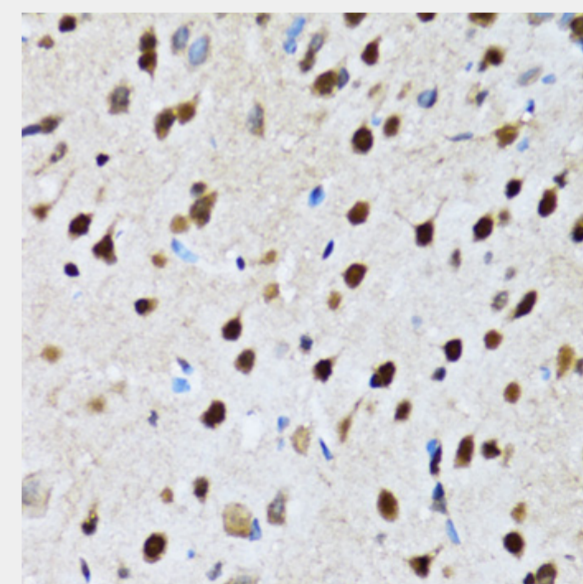
Western blot analysis of extracts of various cell lines, using CCAR2 antibody at 1:1000 dilution. Secondary antibody: HRP Goat Anti-Rabbit IgG (H+L) at 1:10000 dilution. Lysates/proteins: 25ug per lane. Blocking buffer: 3% nonfat dry milk in TBST. Detection: ECL Basic Kit. Exposure time: 30s.



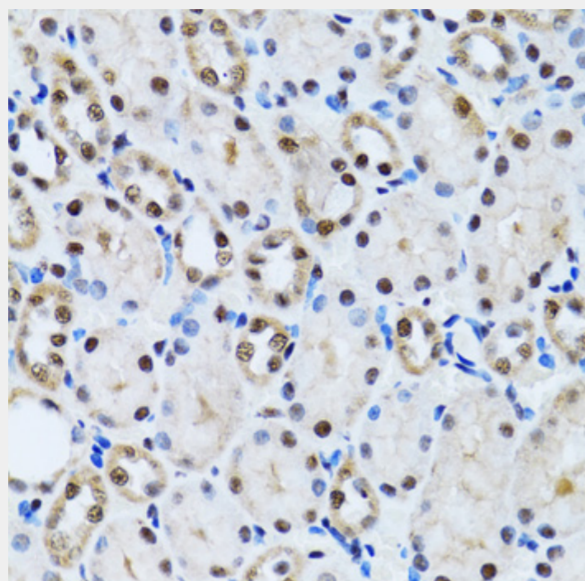
Immunofluorescence analysis of U2OS cells using CCAR2 antibody. Blue: DAPI for nuclear staining.



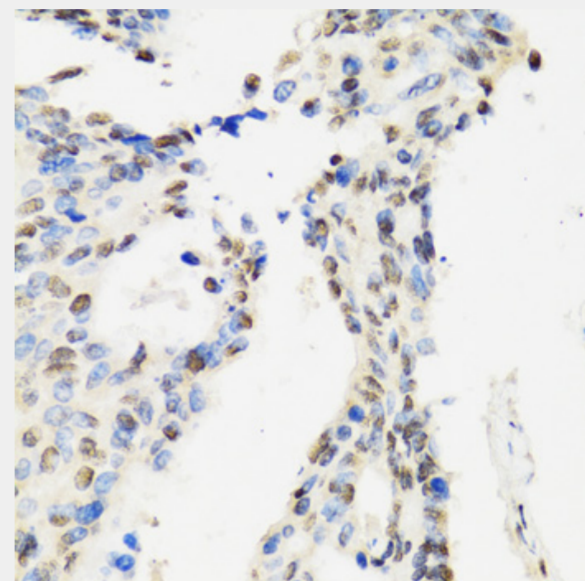
Immunohistochemistry of paraffin-embedded human kidney using CCAR2 antibody at dilution of 1:100 (40x lens).



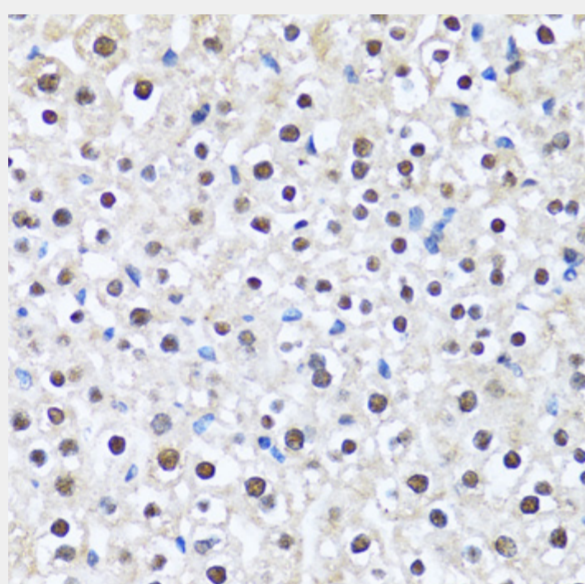
Immunohistochemistry of paraffin-embedded rat brain using CCAR2 antibody at dilution of 1:100 (40x lens).



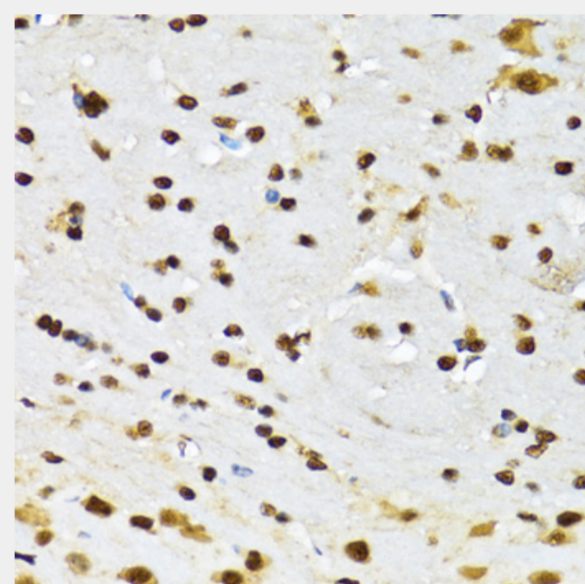
Immunohistochemistry of paraffin-embedded rat kidney using CCAR2 antibody at dilution of 1:100 (40x lens).



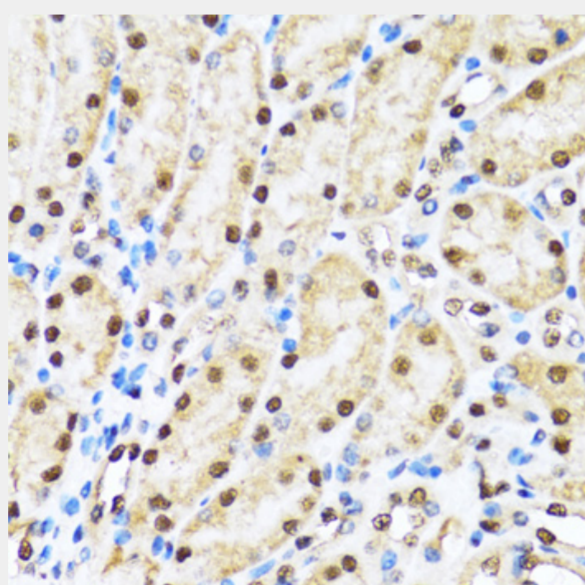
Immunohistochemistry of paraffin-embedded human rectal cancer using CCAR2 antibody at dilution of 1:100 (40x lens).



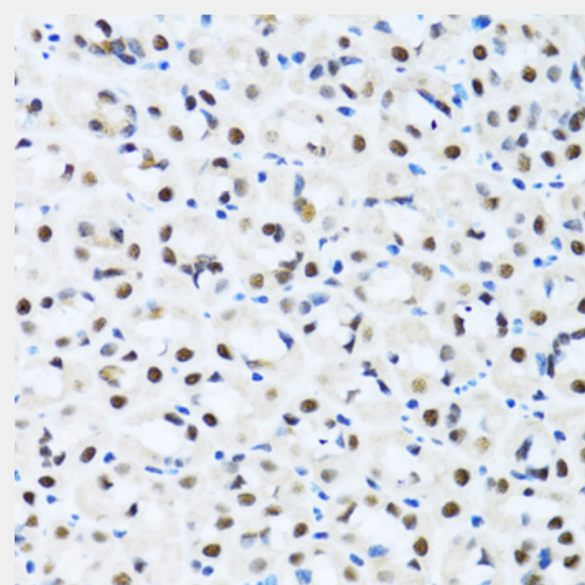
Immunohistochemistry of paraffin-embedded mouse liver using CCAR2 antibody at dilution of 1:100 (40x lens).



Immunohistochemistry of paraffin-embedded mouse brain using CCAR2 antibody at dilution of 1:100 (40x lens).



Immunohistochemistry of paraffin-embedded mouse kidney using CCAR2 antibody at dilution of 1:100 (40x lens).



Immunohistochemistry of paraffin-embedded mouse stomach using CCAR2 antibody at dilution of 1:100 (40x lens).

All products are for RESEARCH USE ONLY. Not for diagnostic & therapeutic purposes!