

Anti DNAJB6 Antibody

Catalog No: tcsa20337



Available Sizes

Size: 100µl



Specifications

Application:

WB, IHC, IF

Species Reactivity:

Human, Mouse, Rat

Host Species:

Rabbit

Immunogen / Amino acids:

Recombinant protein of human DNAJB6

Conjugation:

Unconjugated

Clonality:

Polyclonal

Isotype:

IgG

Form:

Liquid

Storage Buffer:

PBS with 0.02% sodium azide, 50% glycerol, pH7.3.

Recommended Dilution:

WB 1:500 - 1:2000

IHC 1:50 - 1:200

IF 1:50 - 1:100

Storage Instruction:

Store at -20C. Avoid freeze / thaw cycles.

Alternative Names:

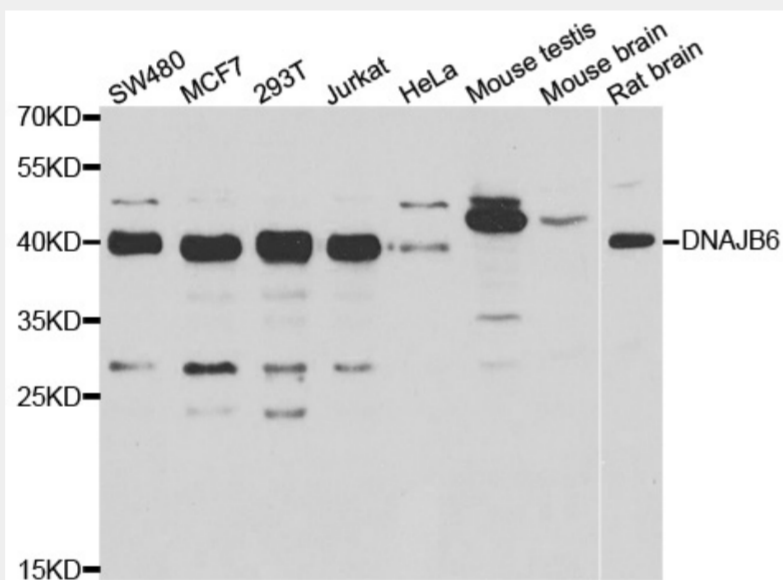
DNAJB6 antibody; Dnaj homolog subfamily B member 6 antibody; HHDJ1 antibody; Heat shock protein J2 antibody; HSJ-2 antibody; MRJ antibody; MSJ-1 antibody; DNAJB6 antibody; HSJ2 antibody; MRJ antibody; MSJ1 antibody

SwissProt:

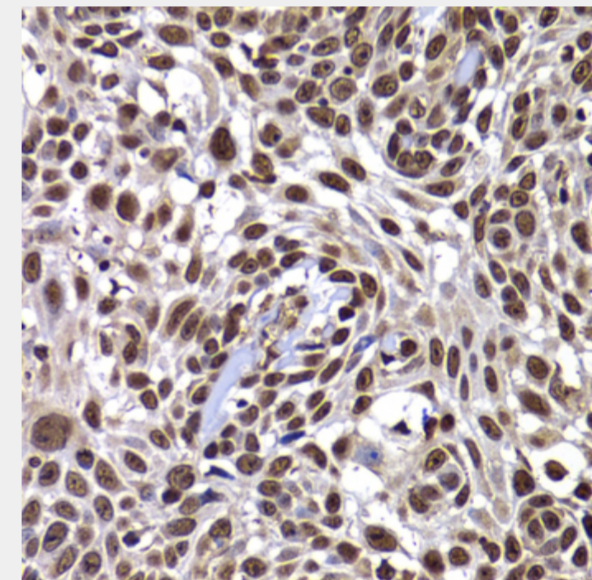
O75190

Product Description

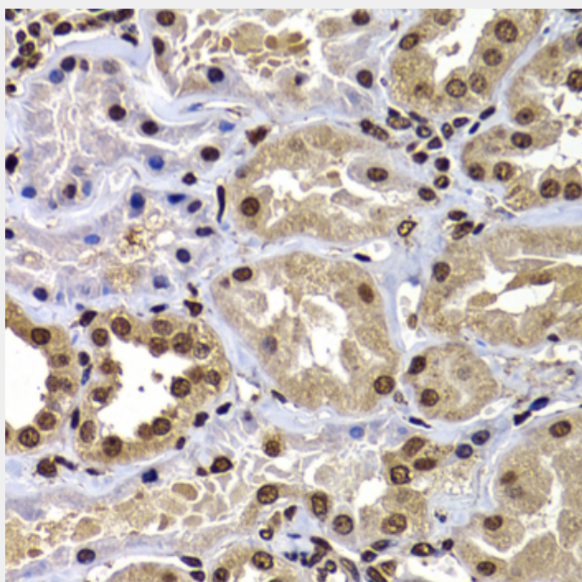
This gene encodes a member of the DNAJ protein family. DNAJ family members are characterized by a highly conserved amino acid stretch called the 'J-domain' and function as one of the two major classes of molecular chaperones involved in a wide range of cellular events, such as protein folding and oligomeric protein complex assembly. This family member may also play a role in polyglutamine aggregation in specific neurons. Alternative splicing of this gene results in multiple transcript variants; however, not all variants have been fully described.



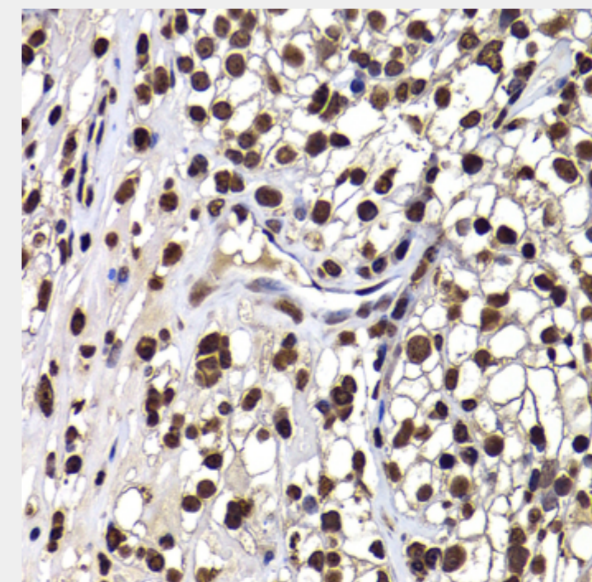
Western blot analysis of extracts of various cell lines, using DNAJB6 antibody at 1:1000 dilution. Secondary antibody: HRP Goat Anti-Rabbit IgG (H+L) at 1:10000 dilution. Lysates/proteins: 25ug per lane. Blocking buffer: 3% nonfat dry milk in TBST. Detection: ECL Basic Kit. Exposure time: 10s.



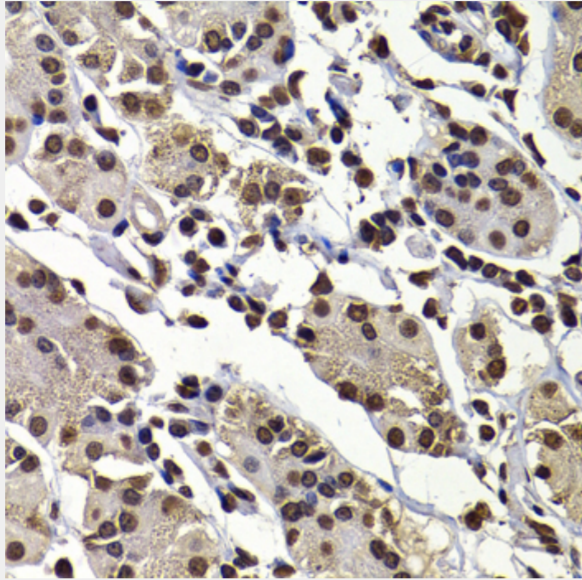
Immunohistochemistry of paraffin-embedded human well-differentiated squamous skin carcinoma using DNAJB6 antibody at dilution of 1:100 (40x lens).



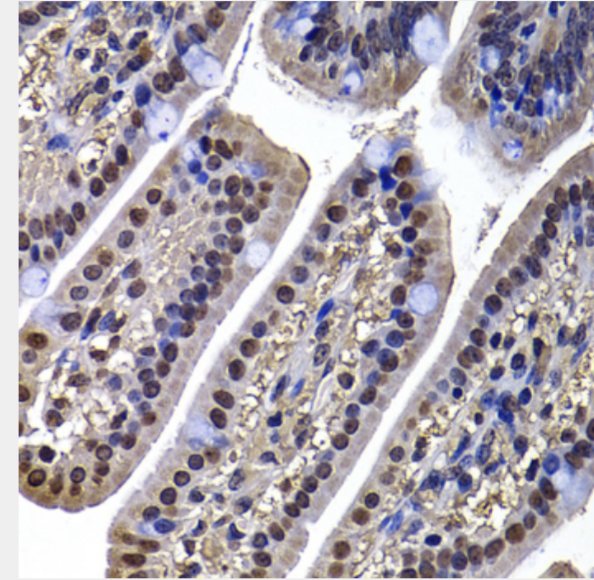
Immunohistochemistry of paraffin-embedded human kidney using DNAJB6 antibody at dilution of 1:100 (40x lens).



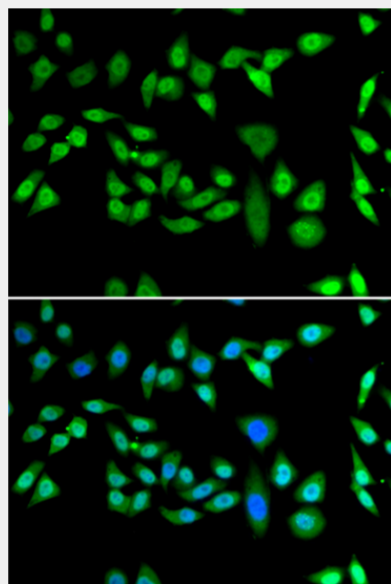
Immunohistochemistry of paraffin-embedded human kidney cancer using DNAJB6 antibody at dilution of 1:100 (40x lens).



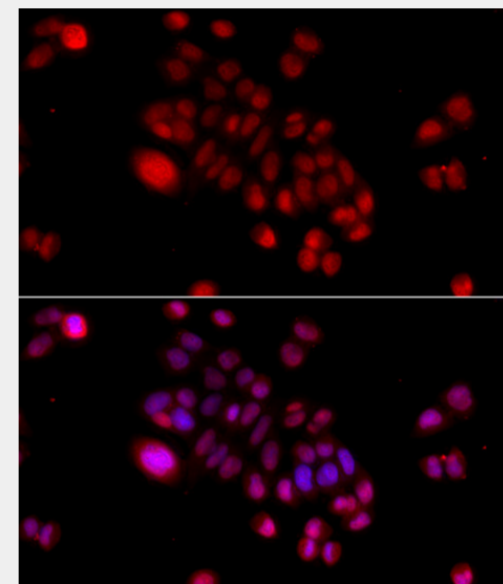
Immunohistochemistry of paraffin-embedded human stomach using DNAJB6 antibody at dilution of 1:100 (40x lens).



Immunohistochemistry of paraffin-embedded mouse ileum using DNAJB6 antibody at dilution of 1:100 (40x lens).



Immunofluorescence analysis of U2OS cells using DNAJB6 antibody. Blue: DAPI for nuclear staining.



Immunofluorescence analysis of HeLa cells using DNAJB6 antibody at dilution of 1:100 (40x lens). Blue: DAPI for nuclear staining.

All products are for RESEARCH USE ONLY. Not for diagnostic & therapeutic purposes!