

# Anti EFTUD2 Antibody

Catalog No: tcsa20326



## Available Sizes

---

**Size:** 100µl

---



## Specifications

---

**Application:**

WB, IHC, IF, IP

---

**Species Reactivity:**

Human, Mouse, Rat

---

**Host Species:**

Rabbit

---

**Immunogen / Amino acids:**

Recombinant protein of human EFTUD2

---

**Conjugation:**

Unconjugated

---

**Clonality:**

Polyclonal

---

**Isotype:**

IgG

---

**Form:**

Liquid

---

**Storage Buffer:**

PBS with 0.02% sodium azide, 50% glycerol, pH7.3.

---

**Recommended Dilution:**

WB 1:500 - 1:2000

IHC 1:50 - 1:200

IF 1:50 - 1:100

IP 1:20 - 1:50

**Storage Instruction:**

Store at -20C. Avoid freeze / thaw cycles.

**Alternative Names:**

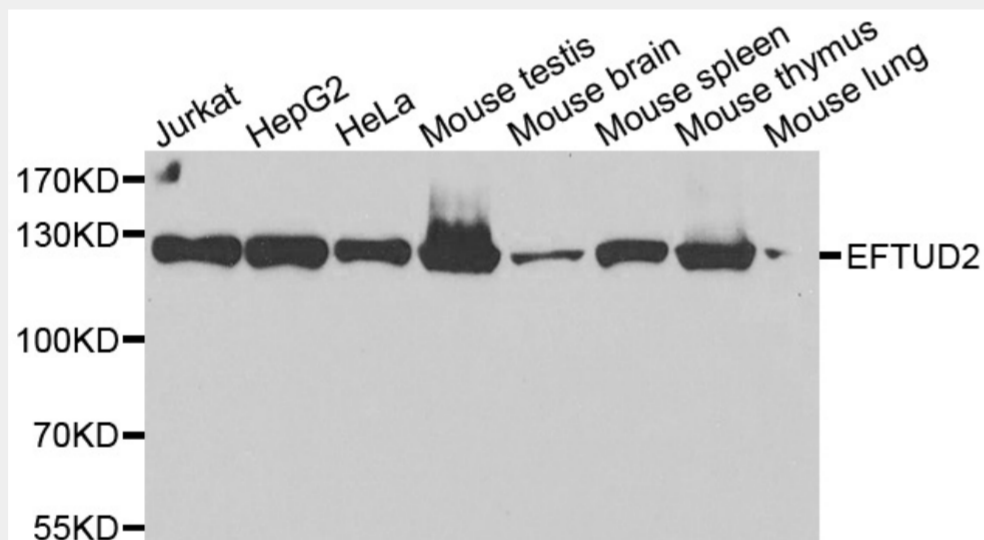
EFTUD2 antibody; 116 kDa U5 small nuclear ribonucleoprotein component antibody; Elongation factor Tu GTP-binding domain-containing protein 2 antibody; SNU114 homolog antibody; hSNU114 antibody; U5 snRNP-specific protein antibody; 116 kDa

**SwissProt:**

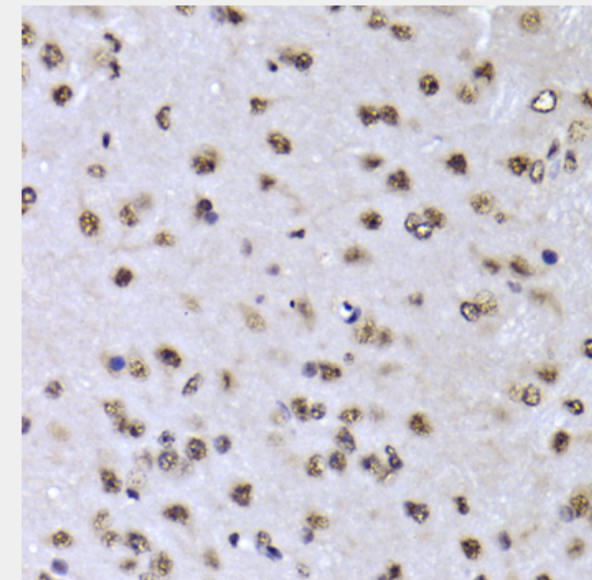
Q15029

**Product Description**

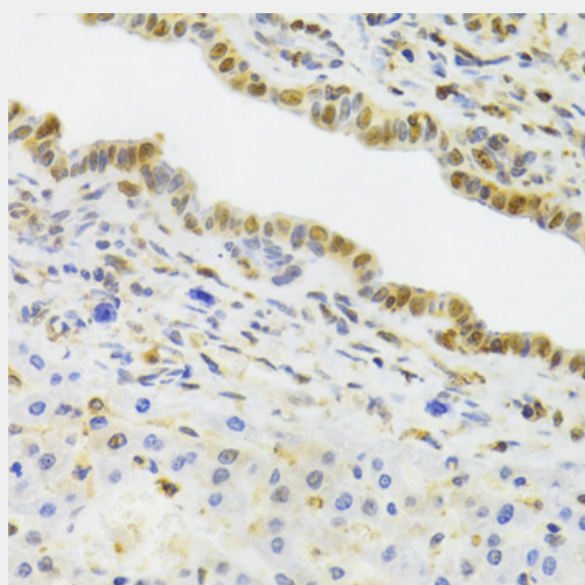
This gene encodes a GTPase which is a component of the spliceosome complex which processes precursor mRNAs to produce mature mRNAs. Mutations in this gene are associated with mandibulofacial dysostosis with microcephaly. Multiple transcript variants encoding different isoforms have been found for this gene.



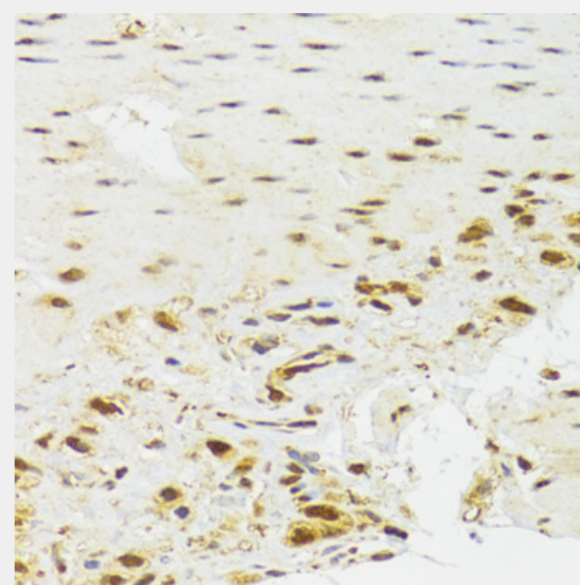
Western blot analysis of extracts of various cell lines, using EFTUD2 antibody at 1:2000 dilution. Secondary antibody: HRP Goat Anti-Rabbit IgG (H+L) at 1:10000 dilution. Lysates/proteins: 25ug per lane. Blocking buffer: 3% nonfat dry milk in TBST. Detection: ECL Enhanced Kit. Exposure time: 20s.



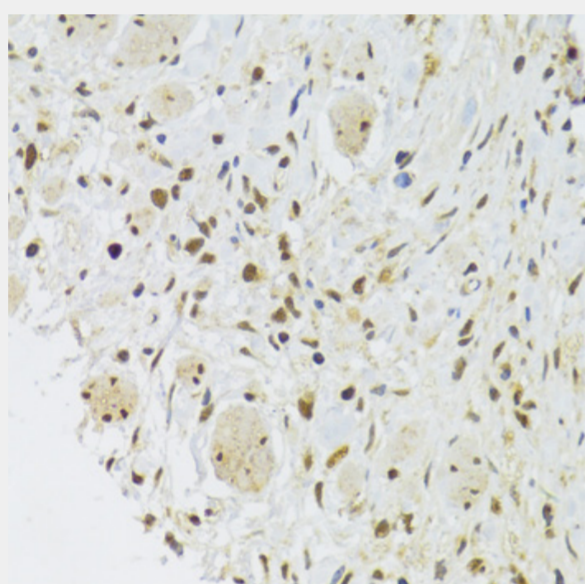
Immunohistochemistry of paraffin-embedded mouse brain using EFTUD2 Antibody at dilution of 1:100 (40x lens).



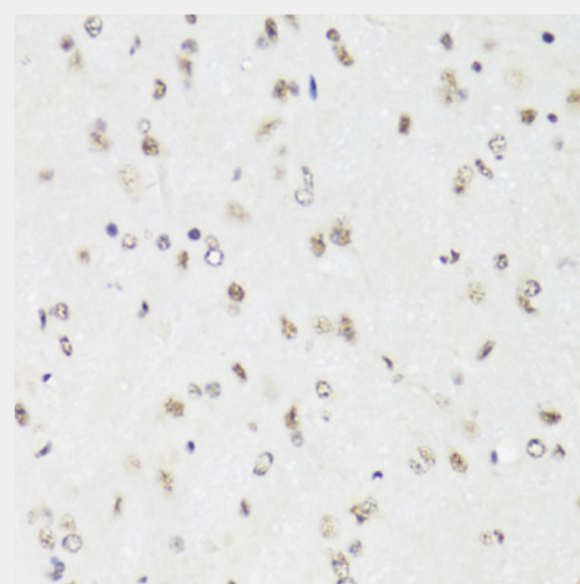
Immunohistochemistry of paraffin-embedded rat liver using EFTUD2 Antibody at dilution of 1:100 (40x lens).



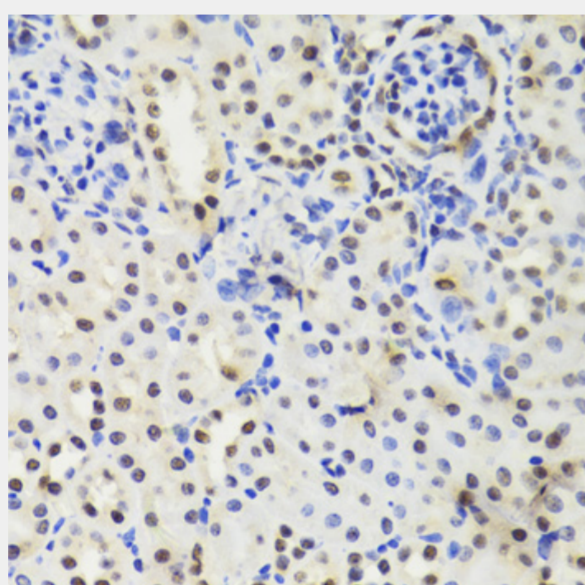
Immunohistochemistry of paraffin-embedded human stomach using EFTUD2 Antibody at dilution of 1:100 (40x lens).



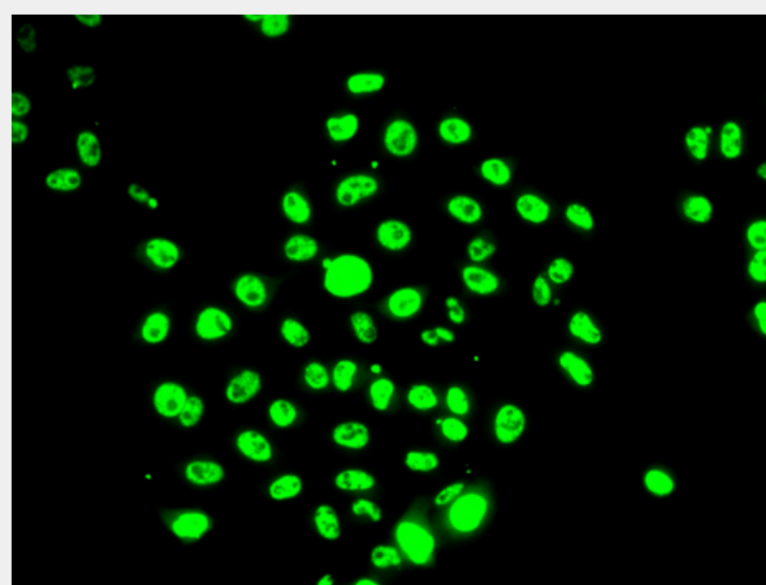
Immunohistochemistry of paraffin-embedded human gastric cancer using EFTUD2 Antibody at dilution of 1:100 (40x lens).



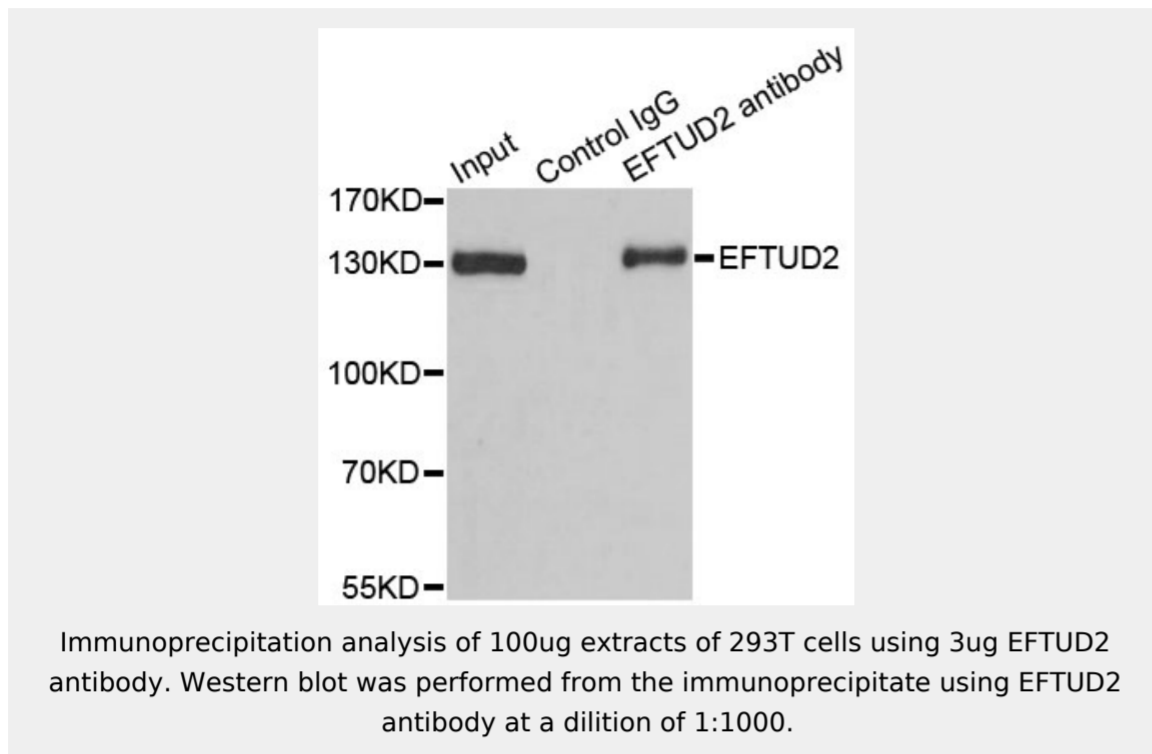
Immunohistochemistry of paraffin-embedded mouse brain using EFTUD2 Antibody at dilution of 1:100 (40x lens).



Immunohistochemistry of paraffin-embedded mouse kidney using EFTUD2 Antibody at dilution of 1:100 (40x lens).



Immunofluorescence analysis of U2OS cells using EFTUD2 antibody.



All products are for RESEARCH USE ONLY. Not for diagnostic & therapeutic purposes!