

Anti HIST1H3A Antibody

Catalog No: tcsa20297



Available Sizes

Size: 100µl



Specifications

Application:

WB, IHC, IF

Species Reactivity:

Human, Mouse, Rat

Host Species:

Rabbit

Immunogen / Amino acids:

Recombinant protein of human HIST1H3D

Conjugation:

Unconjugated

Clonality:

Polyclonal

Isotype:

IgG

Form:

Liquid

Storage Buffer:

PBS with 0.02% sodium azide, 50% glycerol, pH7.3.

Recommended Dilution:

WB 1:500 - 1:2000

IHC 1:50 - 1:200

IF 1:50 - 1:100

Storage Instruction:

Store at -20C. Avoid freeze / thaw cycles.

Alternative Names:

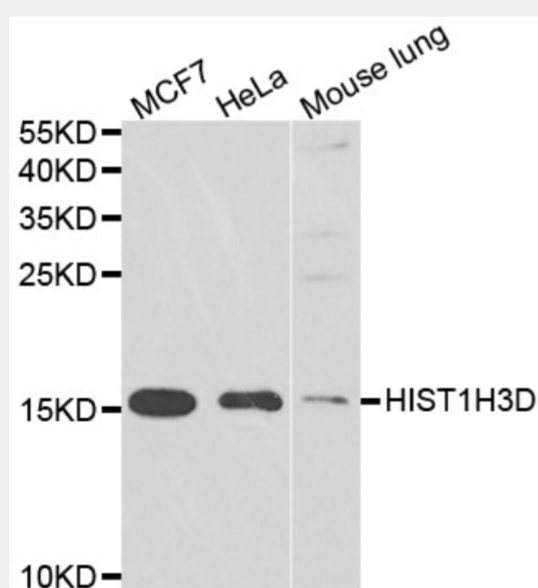
HIST1H3A antibody; Histone H3.1 antibody; Histone H3/a antibody; Histone H3/b antibody; Histone H3/c antibody; Histone H3/d antibody; Histone H3/f antibody; Histone H3/h antibody; Histone H3/i antibody; Histone H3/j antibody

SwissProt:

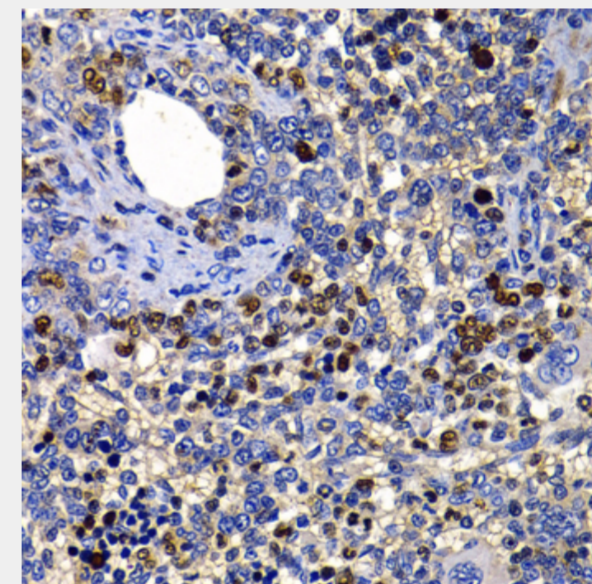
P68431

Product Description

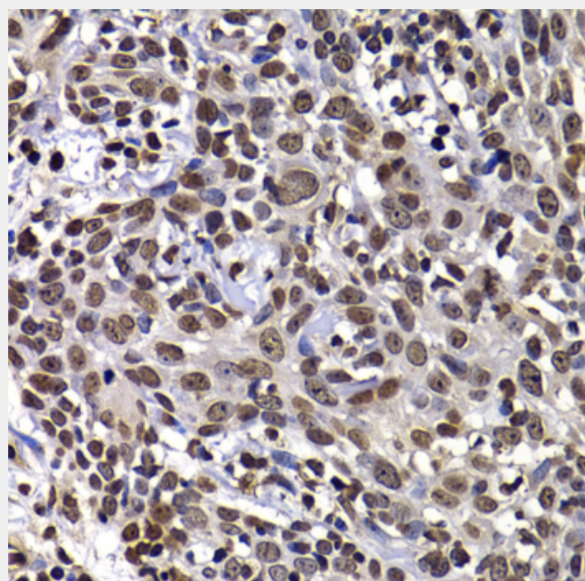
Histones are basic nuclear proteins that are responsible for the nucleosome structure of the chromosomal fiber in eukaryotes. Two molecules of each of the four core histones (H2A, H2B, H3, and H4) form an octamer, around which approximately 146 bp of DNA is wrapped in repeating units, called nucleosomes. The linker histone, H1, interacts with linker DNA between nucleosomes and functions in the compaction of chromatin into higher order structures. This gene is intronless and encodes a replication-dependent histone that is a member of the histone H3 family. Transcripts from this gene lack polyA tails but instead contain a palindromic termination element. This gene is found in the large histone gene cluster on chromosome 6.



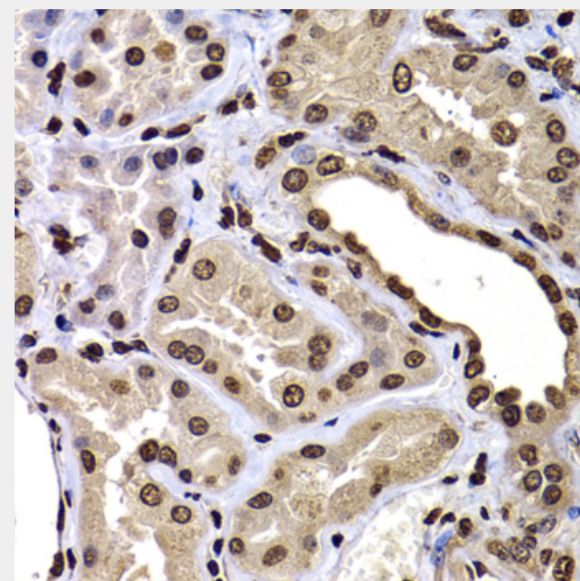
Western blot analysis of extracts of various cell lines, using HIST1H3D antibody at 1:1000 dilution. Secondary antibody: HRP Goat Anti-Rabbit IgG (H+L) at 1:10000 dilution. Lysates/proteins: 25ug per lane. Blocking buffer: 3% nonfat dry milk in TBST. Detection: ECL Enhanced Kit. Exposure time: 30s.



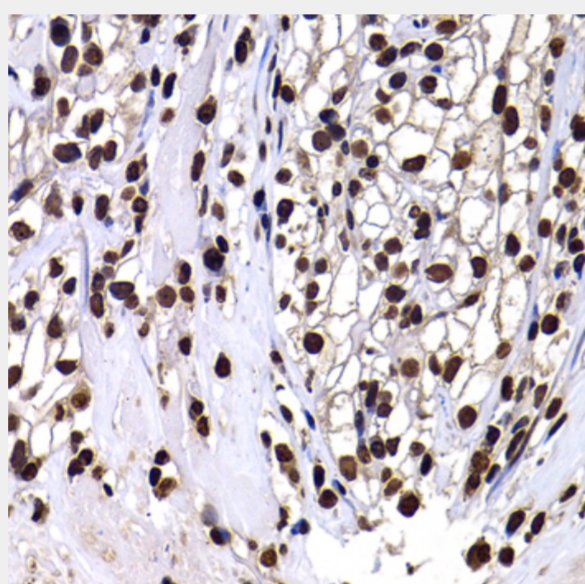
Immunohistochemistry of paraffin-embedded rat spleen using HIST1H3D antibody at dilution of 1:100 (40x lens).



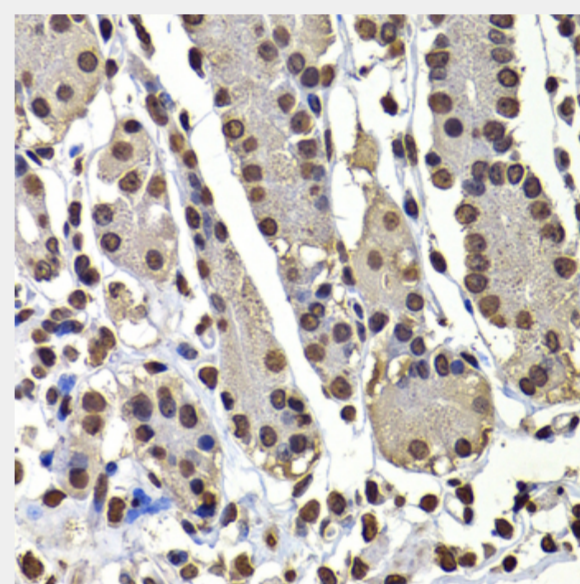
Immunohistochemistry of paraffin-embedded human well-differentiated squamous skin carcinoma using HIST1H3D antibody at dilution of 1:100 (40x lens).



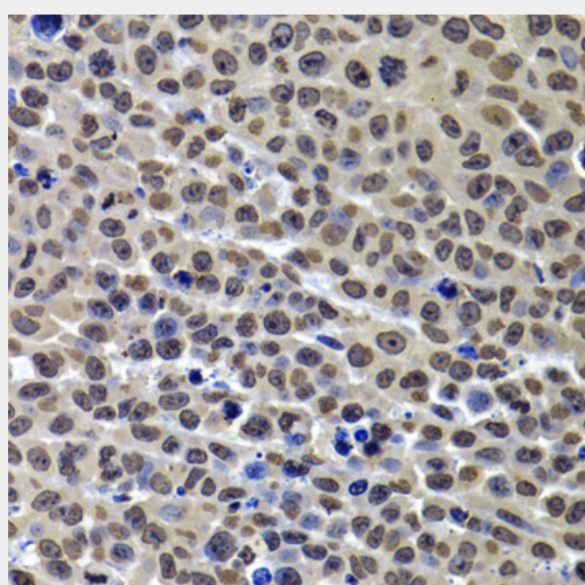
Immunohistochemistry of paraffin-embedded human kidney using HIST1H3D antibody at dilution of 1:100 (40x lens).



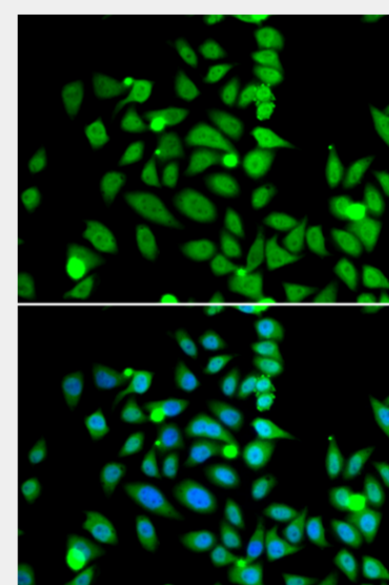
Immunohistochemistry of paraffin-embedded human kidney cancer using HIST1H3D antibody at dilution of 1:100 (40x lens).



Immunohistochemistry of paraffin-embedded human stomach using HIST1H3D antibody at dilution of 1:100 (40x lens).



Immunohistochemistry of paraffin-embedded mouse cancer using HIST1H3D antibody at dilution of 1:100 (40x lens).



Immunofluorescence analysis of U2OS cells using HIST1H3D antibody. Blue: DAPI for nuclear staining.

All products are for RESEARCH USE ONLY. Not for diagnostic & therapeutic purposes!