

Anti TOMM20 Antibody

Catalog No: tcsa20091



Available Sizes

Size: 100μl



Specifications

Application:

WB, IHC, IF

Species Reactivity:

Human, Mouse, Rat

Host Species:

Rabbit

Immunogen / Amino acids:

Recombinant protein of human TOMM20

Conjugation:

Unconjugated

Clonality:

Polyclonal

Isotype:

IgG

Form:

Liquid

Storage Buffer:

PBS with 0.02% sodium azide, 50% glycerol, pH7.3.

Recommended Dilution:

WB 1:500 - 1:2000

IHC 1:50 - 1:200

IF 1:20 - 1:50

Storage Instruction:

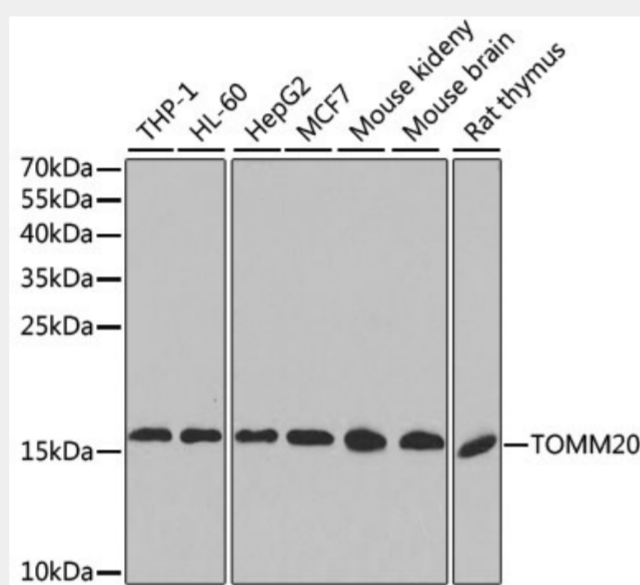
Store at -20C. Avoid freeze / thaw cycles.

Alternative Names:

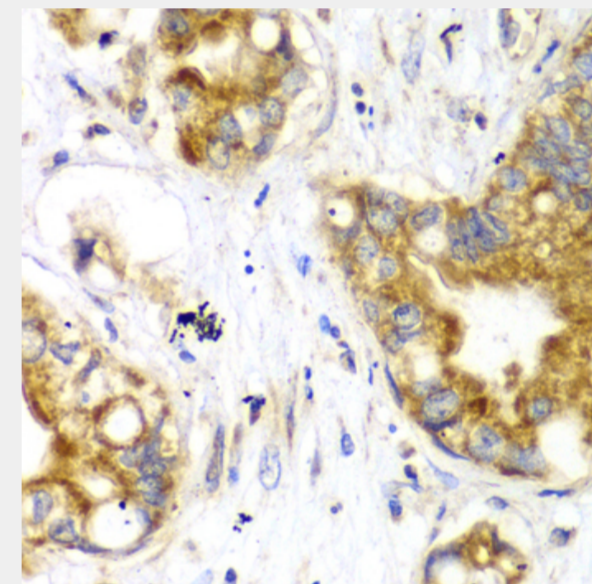
TOMM20 antibody; Mitochondrial import receptor subunit TOM20 homolog antibody; Mitochondrial 20 kDa outer membrane protein antibody; Outer mitochondrial membrane receptor Tom20 antibody; TOMM20 antibody; KIAA0016 antibody

SwissProt:

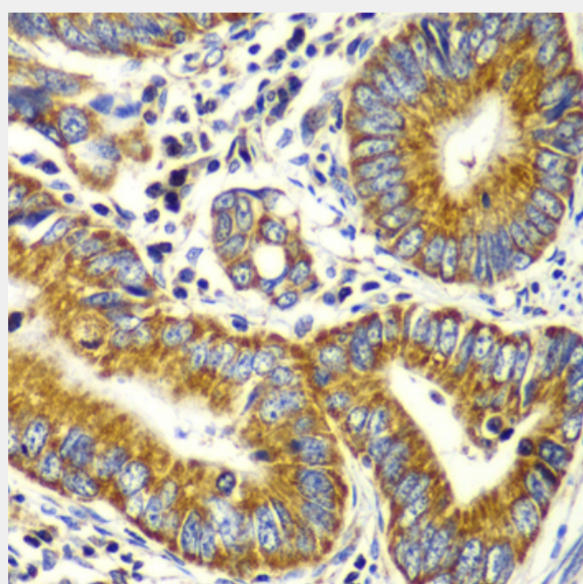
Q15388



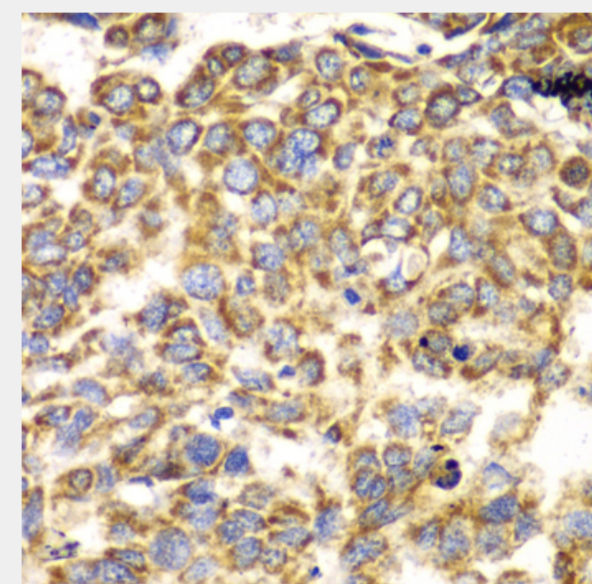
Western blot analysis of extracts of various cell lines, using TOMM20 antibody at 1:1000 dilution. Secondary antibody: HRP Goat Anti-Rabbit IgG (H+L) at 1:10000 dilution. Lysates/proteins: 25ug per lane. Blocking buffer: 3% nonfat dry milk in TBST. Detection: ECL Basic Kit. Exposure time: 60s.



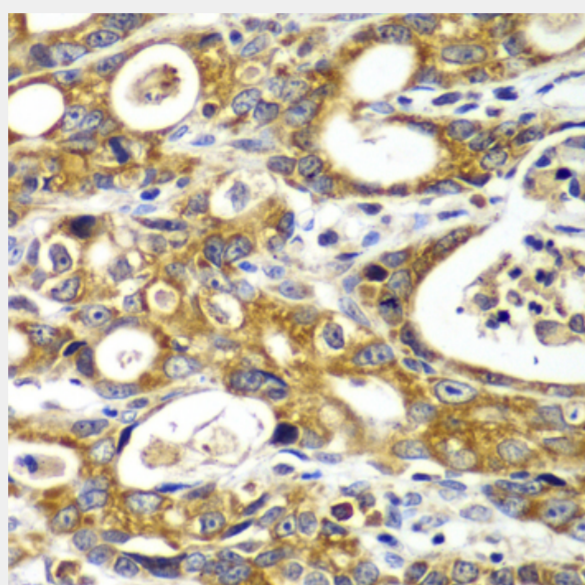
Immunohistochemistry of paraffin-embedded human liver cancer using TOMM20 antibody at dilution of 1:100 (40x lens).



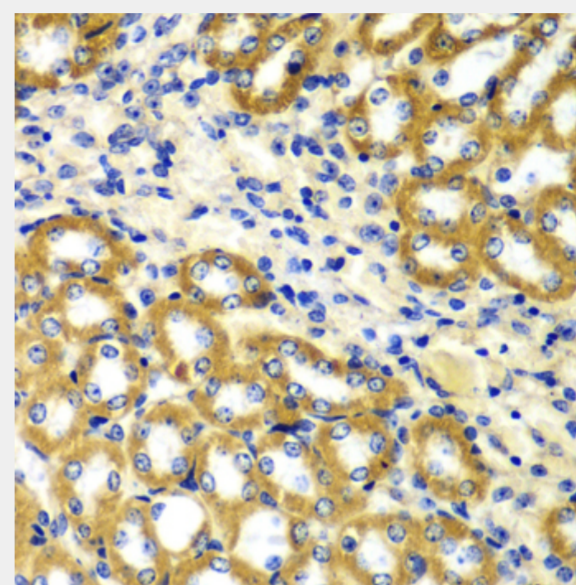
Immunohistochemistry of paraffin-embedded human colon carcinoma using TOMM20 antibody at dilution of 1:100 (40x lens).



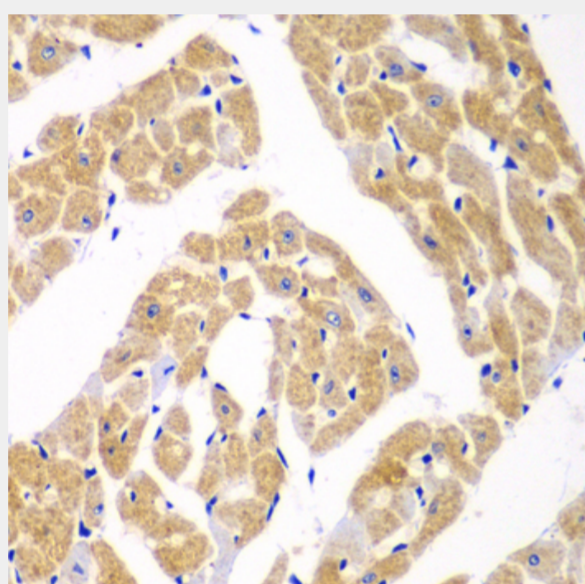
Immunohistochemistry of paraffin-embedded human esophageal cancer using TOMM20 antibody at dilution of 1:100 (40x lens).



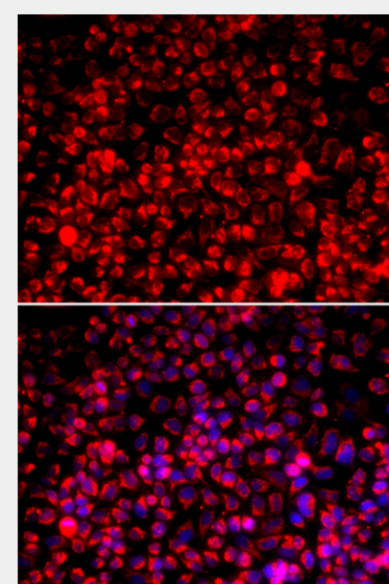
Immunohistochemistry of paraffin-embedded human gastric cancer using TOMM20 antibody at dilution of 1:100 (40x lens).



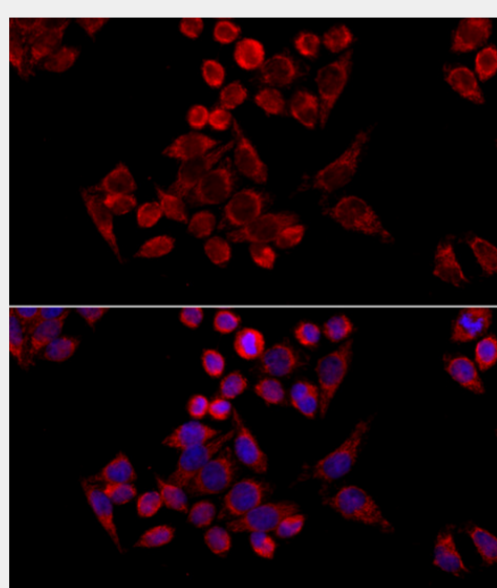
Immunohistochemistry of paraffin-embedded mouse kidney using TOMM20 antibody at dilution of 1:100 (40x lens).



Immunohistochemistry of paraffin-embedded mouse heart using TOMM20 antibody at dilution of 1:100 (40x lens).



Immunofluorescence analysis of A549 cells using TOMM20 antibody. Blue: DAPI for nuclear staining.



Immunofluorescence analysis of HeLa cells using TOMM20 antibody at dilution of 1:100 (40x lens). Blue: DAPI for nuclear staining.

All products are for RESEARCH USE ONLY. Not for diagnostic & therapeutic purposes!