

# Anti PPP1R8 Antibody

Catalog No: tcsa20020



## Available Sizes

---

**Size:** 100μl



## Specifications

---

**Application:**

WB, IHC, IF

**Species Reactivity:**

Human, Mouse, Rat

**Host Species:**

Rabbit

**Immunogen / Amino acids:**

Recombinant protein of human PPP1R8

**Conjugation:**

Unconjugated

**Clonality:**

Polyclonal

**Isotype:**

IgG

**Form:**

Liquid

**Storage Buffer:**

PBS with 0.02% sodium azide, 50% glycerol, pH7.3.

**Recommended Dilution:**

WB 1:500 - 1:2000

IHC 1:50 - 1:200

IF 1:50 - 1:100

### Storage Instruction:

Store at -20C. Avoid freeze / thaw cycles.

### Alternative Names:

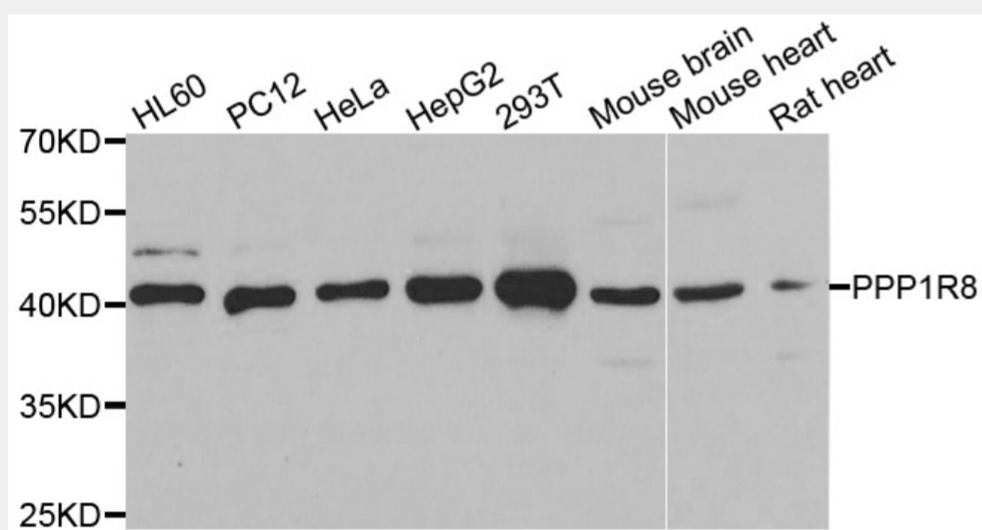
PPP1R8 antibody; Nuclear inhibitor of protein phosphatase 1 antibody; NIPP-1 antibody; Protein phosphatase 1 regulatory inhibitor subunit 8 antibody; PPP1R8 antibody; ARD1 antibody; NIPP1 antibody

### SwissProt:

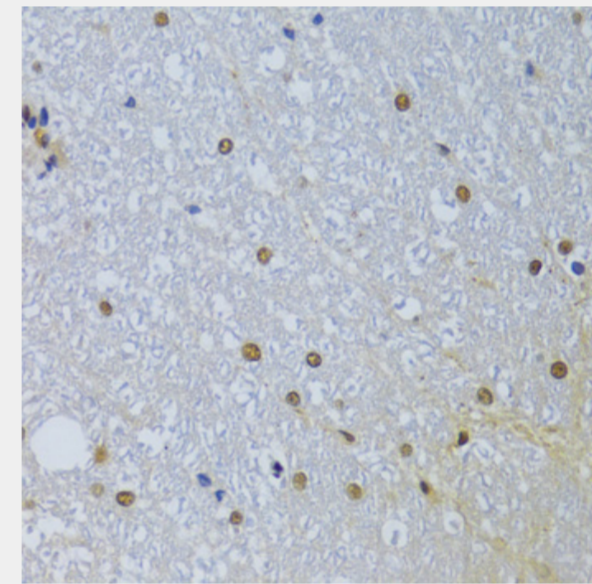
Q12972

## Product Description

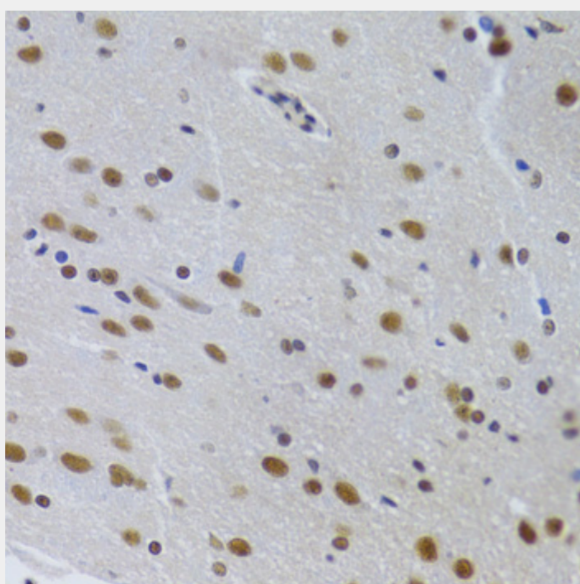
This gene, through alternative splicing, encodes three different isoforms. Two of the protein isoforms encoded by this gene are specific inhibitors of type 1 serine/threonine protein phosphatases and can bind but not cleave RNA. The third protein isoform lacks the phosphatase inhibitory function but is a single-strand endoribonuclease comparable to RNase E of E. coli. This isoform requires magnesium for its function and cleaves specific sites in A+U-rich regions of RNA.



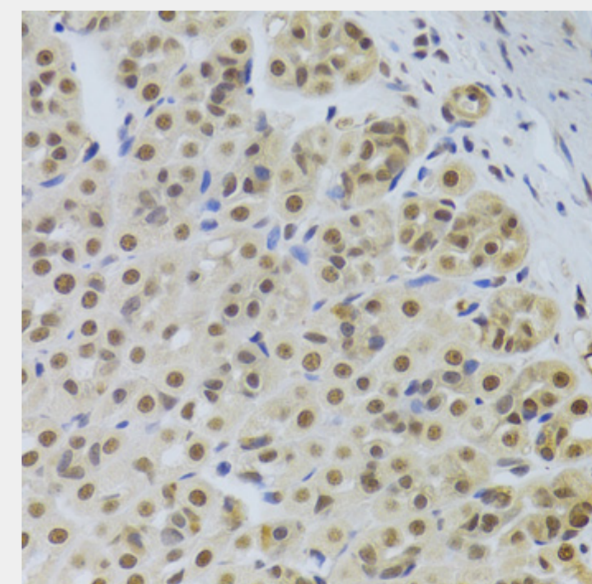
Western blot analysis of extracts of various cell lines, using PPP1R8 antibody at 1:1000 dilution. Secondary antibody: HRP Goat Anti-Rabbit IgG (H+L) at 1:10000 dilution. Lysates/proteins: 25ug per lane. Blocking buffer: 3% nonfat dry milk in TBST. Detection: ECL Basic Kit. Exposure time: 30s.



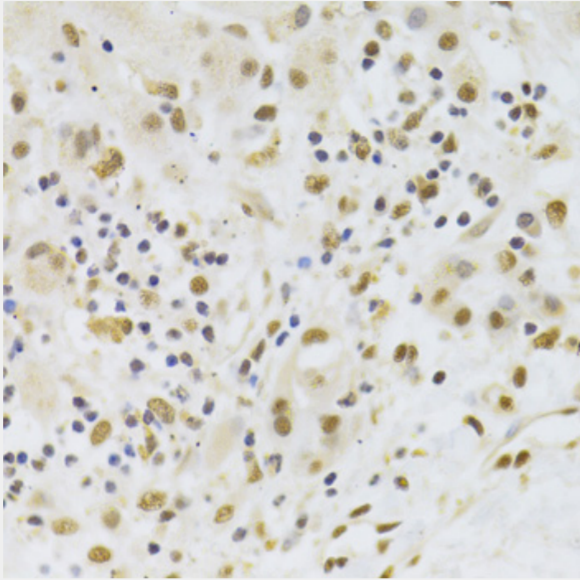
Immunohistochemistry of paraffin-embedded rat spinal cord using PPP1R8 Antibody at dilution of 1:100 (40x lens).



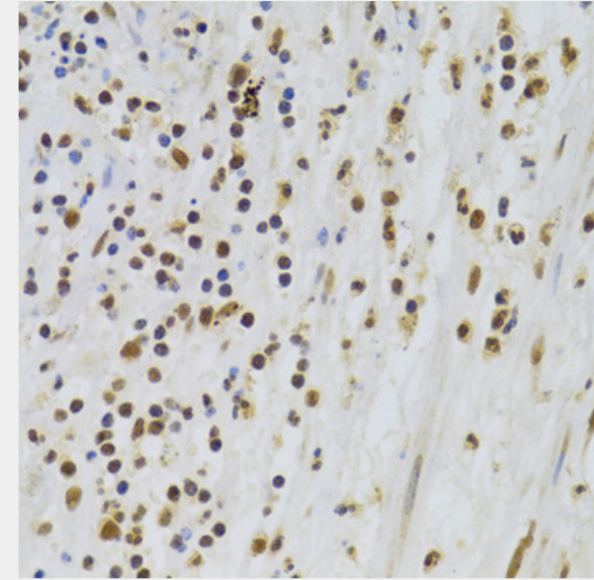
Immunohistochemistry of paraffin-embedded rat brain using PPP1R8 Antibody at dilution of 1:100 (40x lens).



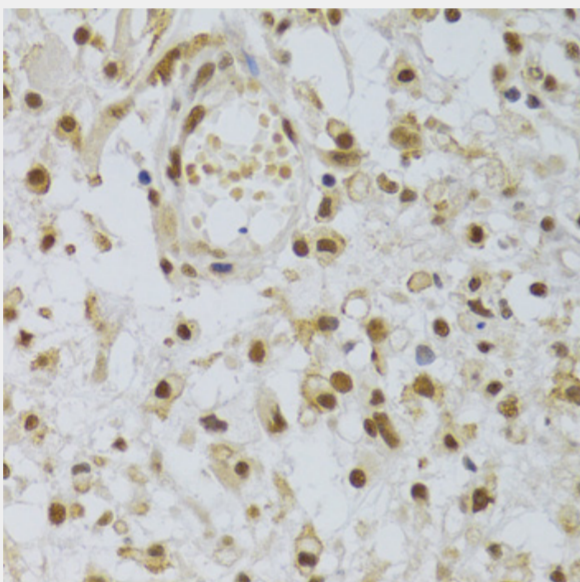
Immunohistochemistry of paraffin-embedded rat stomach using PPP1R8 Antibody at dilution of 1:100 (40x lens).



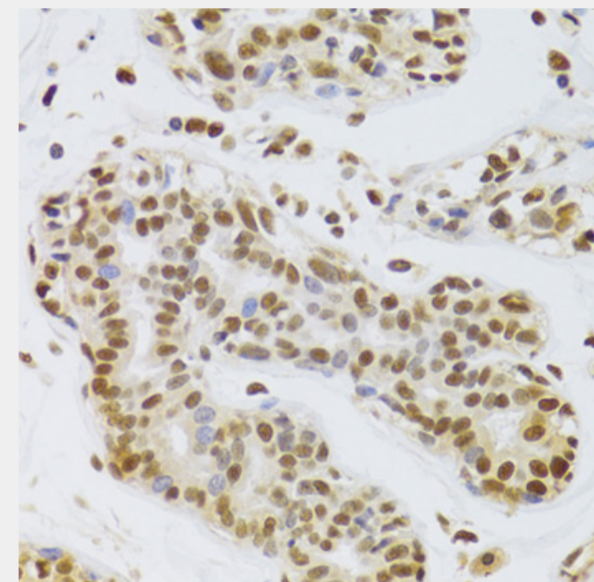
Immunohistochemistry of paraffin-embedded human liver cancer using PPP1R8 Antibody at dilution of 1:100 (40x lens).



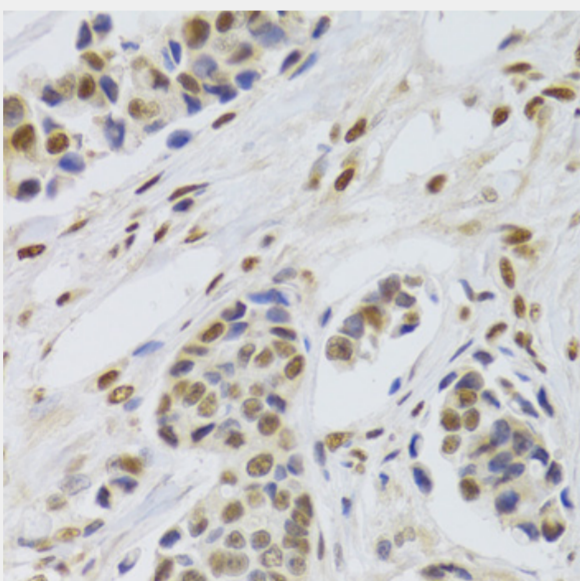
Immunohistochemistry of paraffin-embedded human appendicitis using PPP1R8 Antibody at dilution of 1:100 (40x lens).



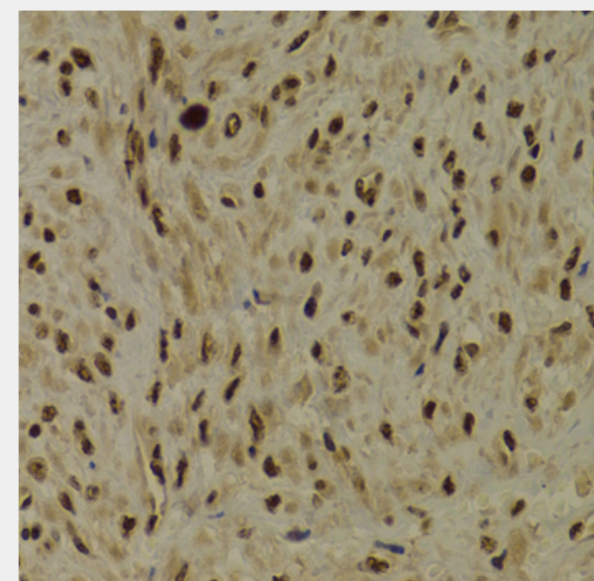
Immunohistochemistry of paraffin-embedded human brain astrocytoma using PPP1R8 Antibody at dilution of 1:100 (40x lens).



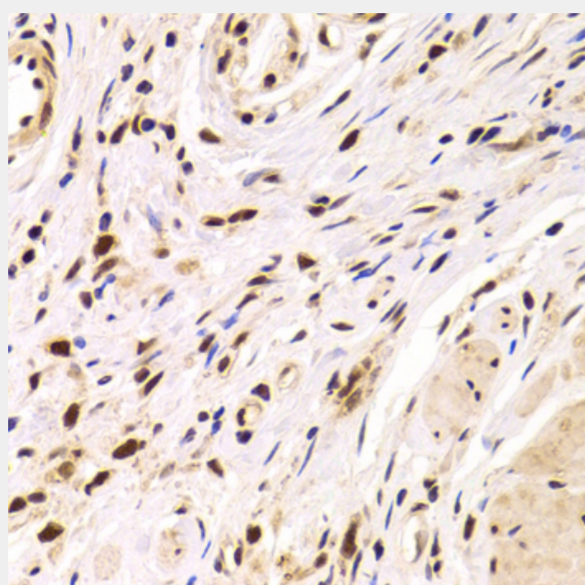
Immunohistochemistry of paraffin-embedded human breast using PPP1R8 Antibody at dilution of 1:100 (40x lens).



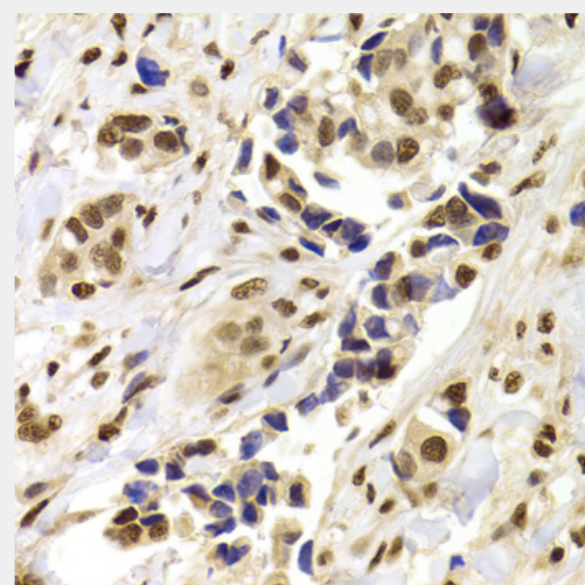
Immunohistochemistry of paraffin-embedded human breast cancer using PPP1R8 Antibody at dilution of 1:100 (40x lens).



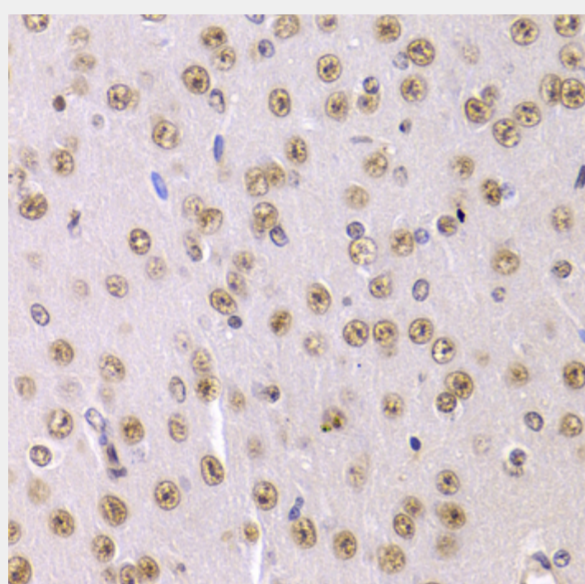
Immunohistochemistry of paraffin-embedded human adenomyosis using PPP1R8 Antibody at dilution of 1:100 (40x lens).



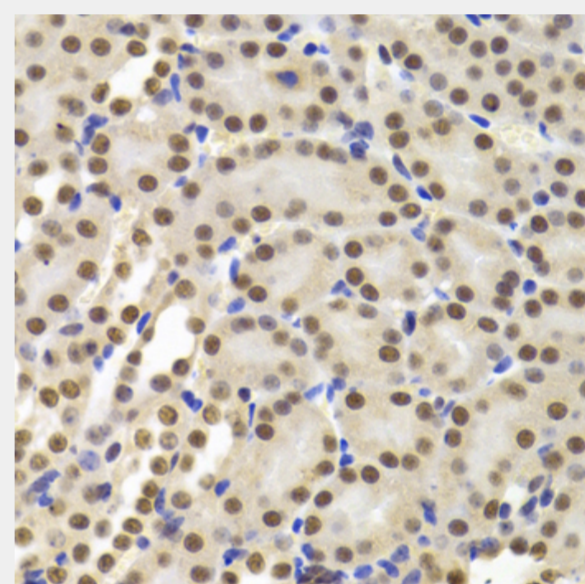
Immunohistochemistry of paraffin-embedded human gastric cancer using PPP1R8 Antibody at dilution of 1:100 (40x lens).



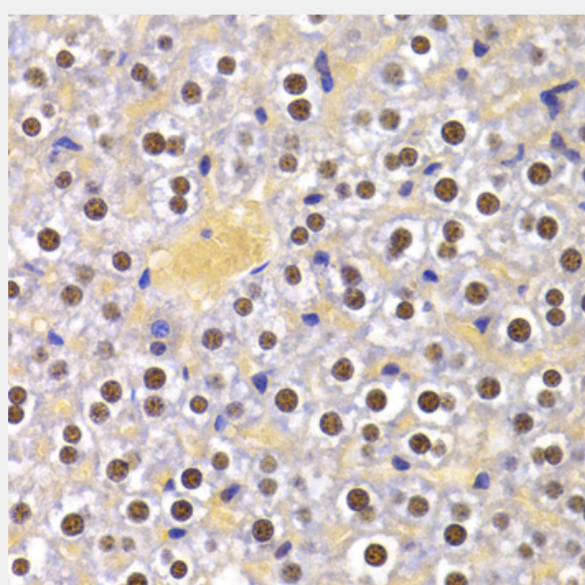
Immunohistochemistry of paraffin-embedded human breast cancer using PPP1R8 Antibody at dilution of 1:100 (40x lens).



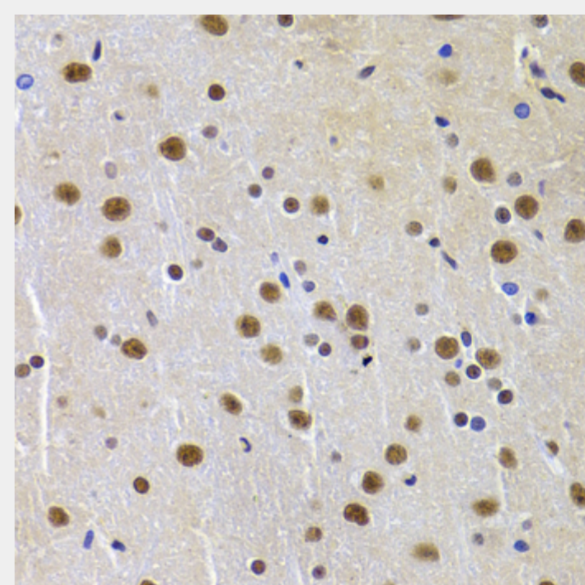
Immunohistochemistry of paraffin-embedded mouse brain using PPP1R8 Antibody at dilution of 1:100 (40x lens).



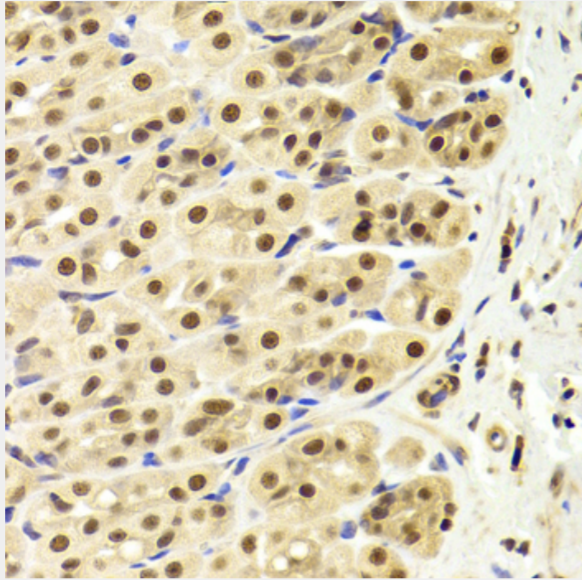
Immunohistochemistry of paraffin-embedded mouse kidney using PPP1R8 Antibody at dilution of 1:100 (40x lens).



Immunohistochemistry of paraffin-embedded mouse liver using PPP1R8 Antibody at dilution of 1:100 (40x lens).



Immunohistochemistry of paraffin-embedded rat brain using PPP1R8 Antibody at dilution of 1:100 (40x lens).



Immunohistochemistry of paraffin-embedded rat stomach using PPP1R8 Antibody at dilution of 1:100 (40x lens).

All products are for RESEARCH USE ONLY. Not for diagnostic & therapeutic purposes!