

# Anti PNKP Antibody

Catalog No: tcsa20012



## Available Sizes

---

**Size:** 100μl



## Specifications

---

**Application:**

WB, IHC, IF

**Species Reactivity:**

Human, Mouse, Rat

**Host Species:**

Rabbit

**Immunogen / Amino acids:**

Recombinant protein of human PNKP

**Conjugation:**

Unconjugated

**Clonality:**

Polyclonal

**Isotype:**

IgG

**Form:**

Liquid

**Storage Buffer:**

PBS with 0.02% sodium azide, 50% glycerol, pH7.3.

**Recommended Dilution:**

WB 1:500 - 1:2000

IHC 1:50 - 1:200

IF 1:50 - 1:100

**Storage Instruction:**

Store at -20C. Avoid freeze / thaw cycles.

**Alternative Names:**

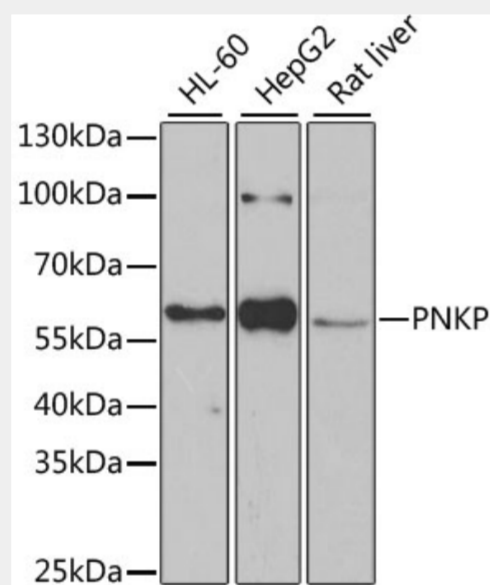
PNKP antibody; Bifunctional polynucleotide phosphatase/kinase antibody; DNA 5'-kinase/3'-phosphatase antibody; Polynucleotide kinase-3'-phosphatase antibody; PNKP antibody

**SwissProt:**

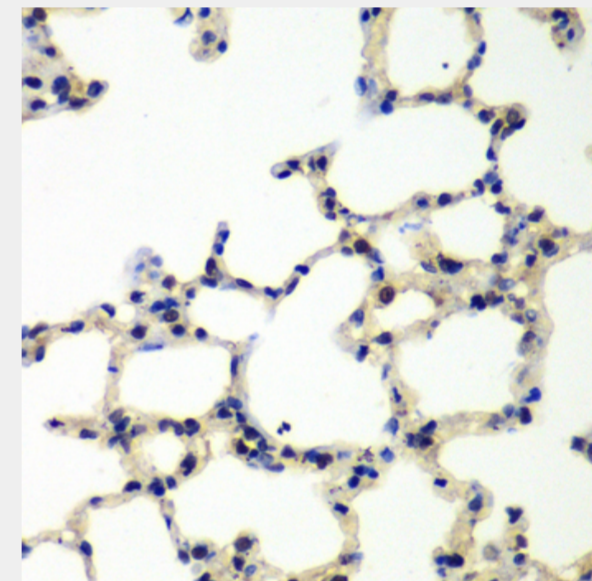
Q96T60

**Product Description**

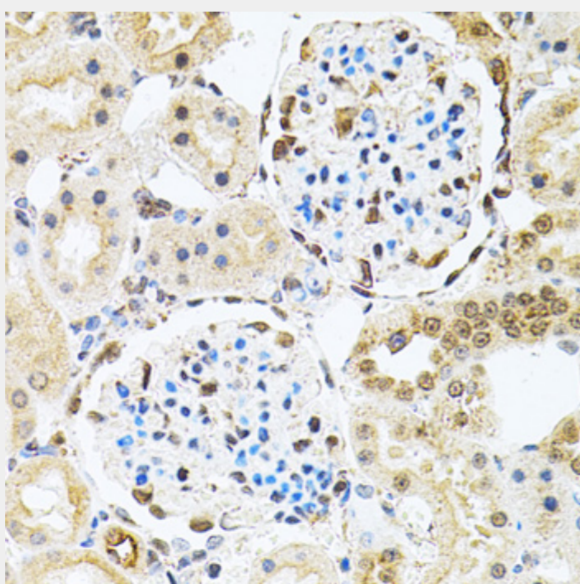
This locus represents a gene involved in DNA repair. In response to ionizing radiation or oxidative damage, the protein encoded by this locus catalyzes 5' phosphorylation and 3' dephosphorylation of nucleic acids. Mutations at this locus have been associated with microcephaly, seizures, and developmental delay.



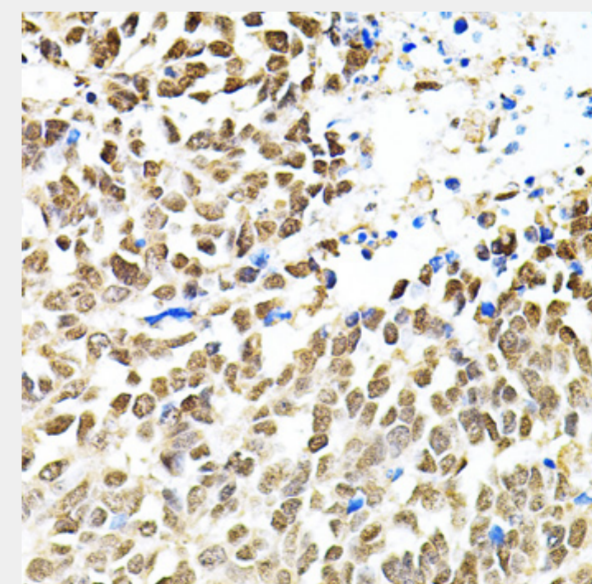
Western blot analysis of extracts of various cell lines, using PNKP antibody at 1:1000 dilution. Secondary antibody: HRP Goat Anti-Rabbit IgG (H+L) at 1:10000 dilution. Lysates/proteins: 25ug per lane. Blocking buffer: 3% nonfat dry milk in TBST. Detection: ECL Basic Kit. Exposure time: 90s.



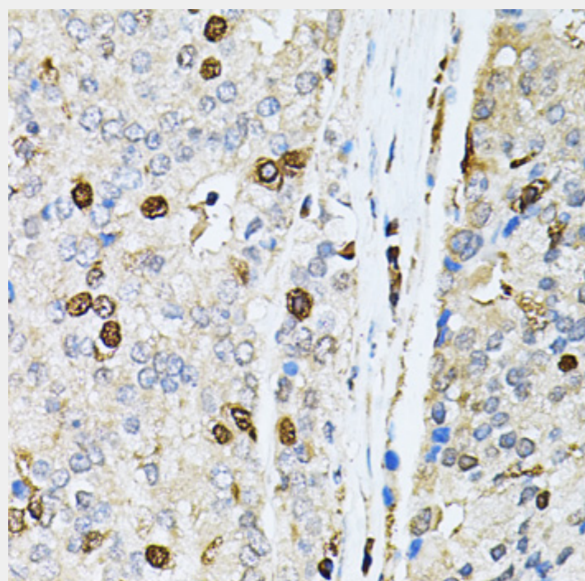
Immunohistochemistry of paraffin-embedded rat lung using PNKP antibody at dilution of 1:100 (40x lens).



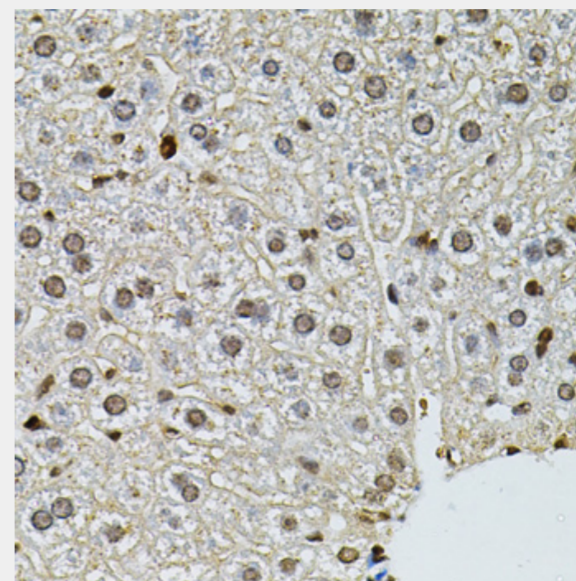
Immunohistochemistry of paraffin-embedded rat kidney using PNKP antibody at dilution of 1:100 (40x lens).



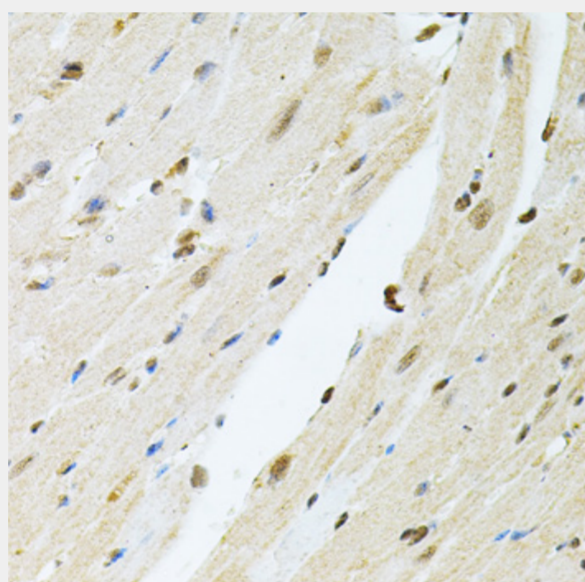
Immunohistochemistry of paraffin-embedded human lung cancer using PNKP antibody at dilution of 1:100 (40x lens).



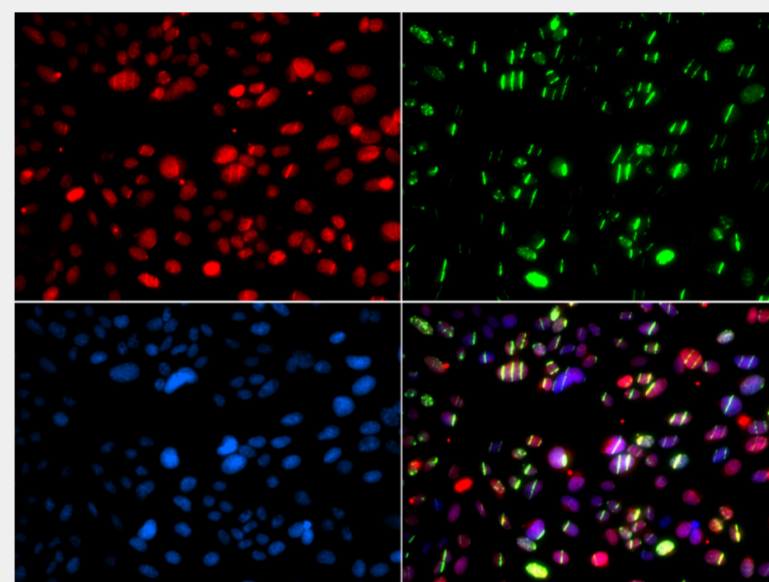
Immunohistochemistry of paraffin-embedded human prostate cancer using PNKP antibody at dilution of 1:100 (40x lens).



Immunohistochemistry of paraffin-embedded mouse liver using PNKP antibody at dilution of 1:100 (40x lens).



Immunohistochemistry of paraffin-embedded mouse heart using PNKP antibody at dilution of 1:100 (40x lens).



Immunofluorescence analysis of GFP-RNF168 transgenic U2OS cells using PNKP antibody. Green □ GFP-RNF168 fusion protein expression for DNA damage marker. Blue: DAPI for nuclear staining. RNF168(GFP) can be used to mark cells damaged by UV-A laser for they always gather around DNA damage region.

All products are for RESEARCH USE ONLY. Not for diagnostic & therapeutic purposes!