

# Anti SPN Antibody

Catalog No: tcsa19753



## Available Sizes

---

**Size:** 100μl



## Specifications

---

**Application:**

WB, IHC

**Species Reactivity:**

Human, Mouse

**Host Species:**

Rabbit

**Immunogen / Amino acids:**

Recombinant protein of human SPN

**Conjugation:**

Unconjugated

**Clonality:**

Polyclonal

**Isotype:**

IgG

**Form:**

Liquid

**Storage Buffer:**

PBS with 0.02% sodium azide, 50% glycerol, pH7.3.

**Recommended Dilution:**

WB 1:500 - 1:2000

IHC 1:50 - 1:200

**Storage Instruction:**

Store at -20C. Avoid freeze / thaw cycles.

**Alternative Names:**

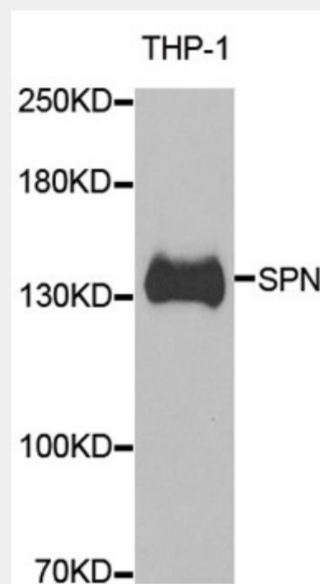
SPN antibody; Leukosialin antibody; GPL115 antibody; Galactoglycoprotein antibody; GALGP antibody; Leukocyte sialoglycoprotein antibody; Sialophorin antibody; CD antigen CD43 antibody; SPN antibody; CD43 antibody

**SwissProt:**

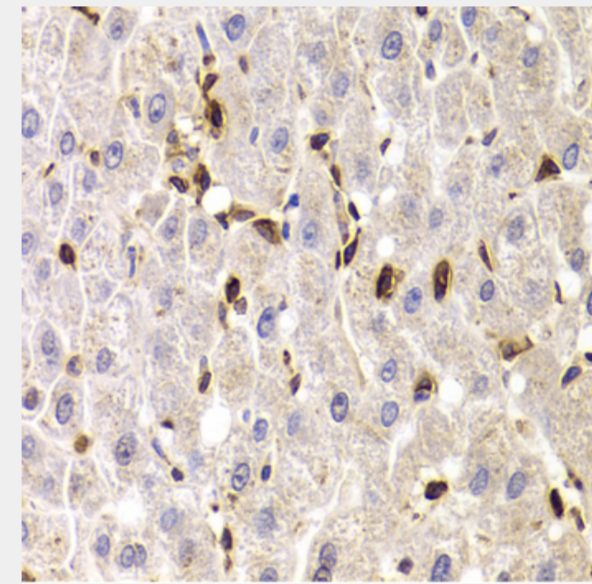
P16150

**Product Description**

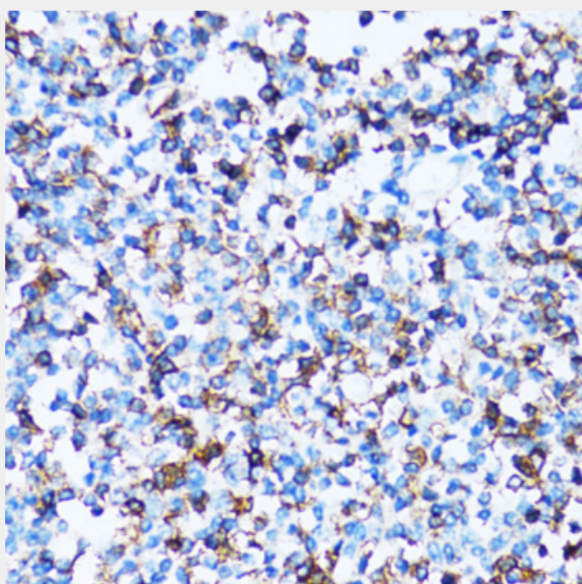
The protein encoded by this gene is a major sialoglycoprotein found on the surface of thymocytes, T lymphocytes, monocytes, granulocytes, and some B lymphocytes. It may be part of a physiologic ligand-receptor complex involved in T-cell activation. During T-cell activation, this protein is actively removed from the T-cell-APC (antigen-presenting cell) contact site, suggesting a negative regulatory role in adaptive immune response.



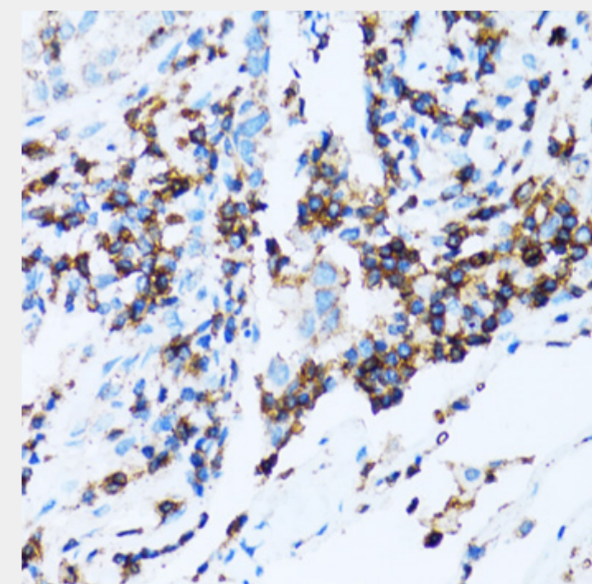
Western blot analysis of extracts of THP-1 cells, using SPN antibody at 1:1000 dilution. Secondary antibody: HRP Goat Anti-Rabbit IgG (H+L) at 1:10000 dilution. Lysates/proteins: 25ug per lane. Blocking buffer: 3% nonfat dry milk in TBST. Detection: ECL Basic Kit. Exposure time: 60s.



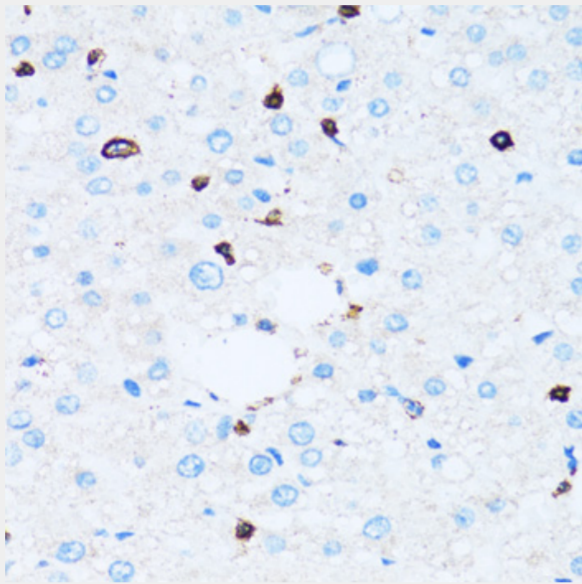
Immunohistochemistry of paraffin-embedded human liver injury using SPN antibody at dilution of 1:100 (40x lens).



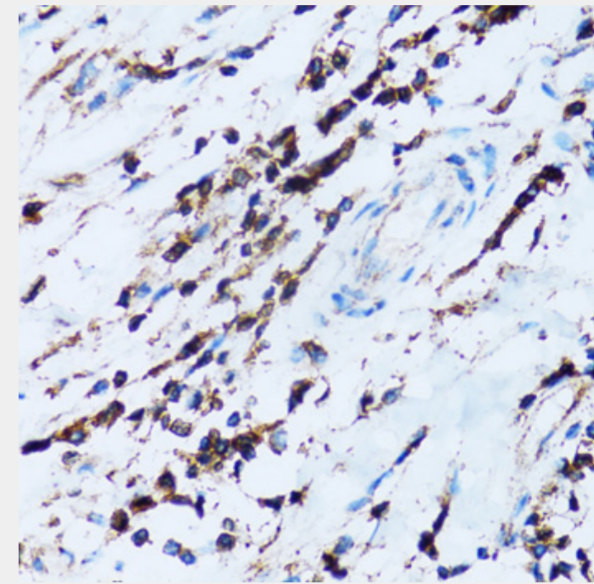
Immunohistochemistry of paraffin-embedded human tonsil using SPN antibody at dilution of 1:100 (40x lens).



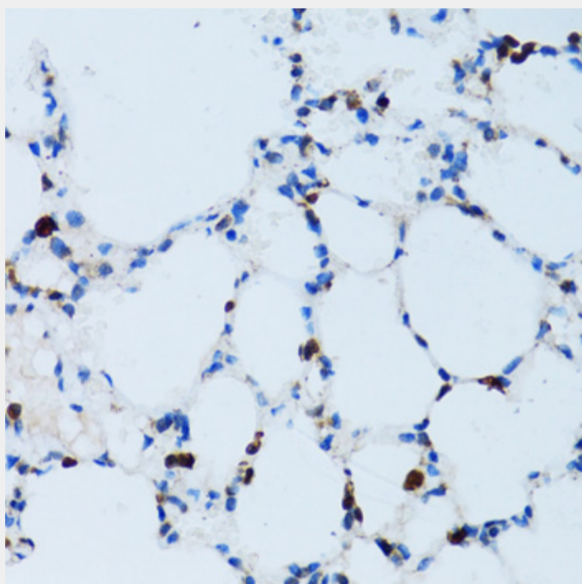
Immunohistochemistry of paraffin-embedded human lung cancer using SPN antibody at dilution of 1:100 (40x lens).



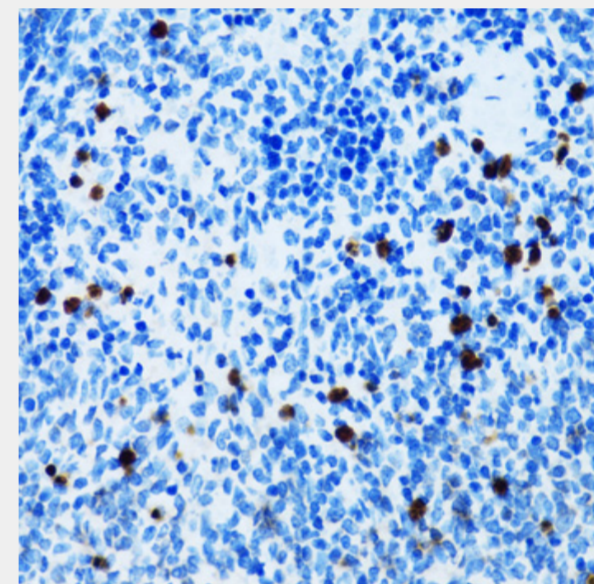
Immunohistochemistry of paraffin-embedded human liver using SPN antibody at dilution of 1:100 (40x lens).



Immunohistochemistry of paraffin-embedded human breast cancer using SPN antibody at dilution of 1:100 (40x lens).



Immunohistochemistry of paraffin-embedded mouse lung using SPN antibody at dilution of 1:100 (40x lens).



Immunohistochemistry of paraffin-embedded mouse spleen using SPN antibody at dilution of 1:100 (40x lens).

All products are for RESEARCH USE ONLY. Not for diagnostic & therapeutic purposes!