

Anti SNRPA Antibody

Catalog No: tcsa19751



Available Sizes

Size: 100µl



Specifications

Application:

WB, IHC, IF

Species Reactivity:

Human, Mouse, Rat

Host Species:

Rabbit

Immunogen / Amino acids:

Recombinant protein of human SNRPA

Conjugation:

Unconjugated

Clonality:

Polyclonal

Isotype:

IgG

Form:

Liquid

Storage Buffer:

PBS with 0.02% sodium azide, 50% glycerol, pH7.3.

Recommended Dilution:

WB 1:500 - 1:2000

IHC 1:50 - 1:200

IF 1:50 - 1:200

Storage Instruction:

Store at -20C. Avoid freeze / thaw cycles.

Alternative Names:

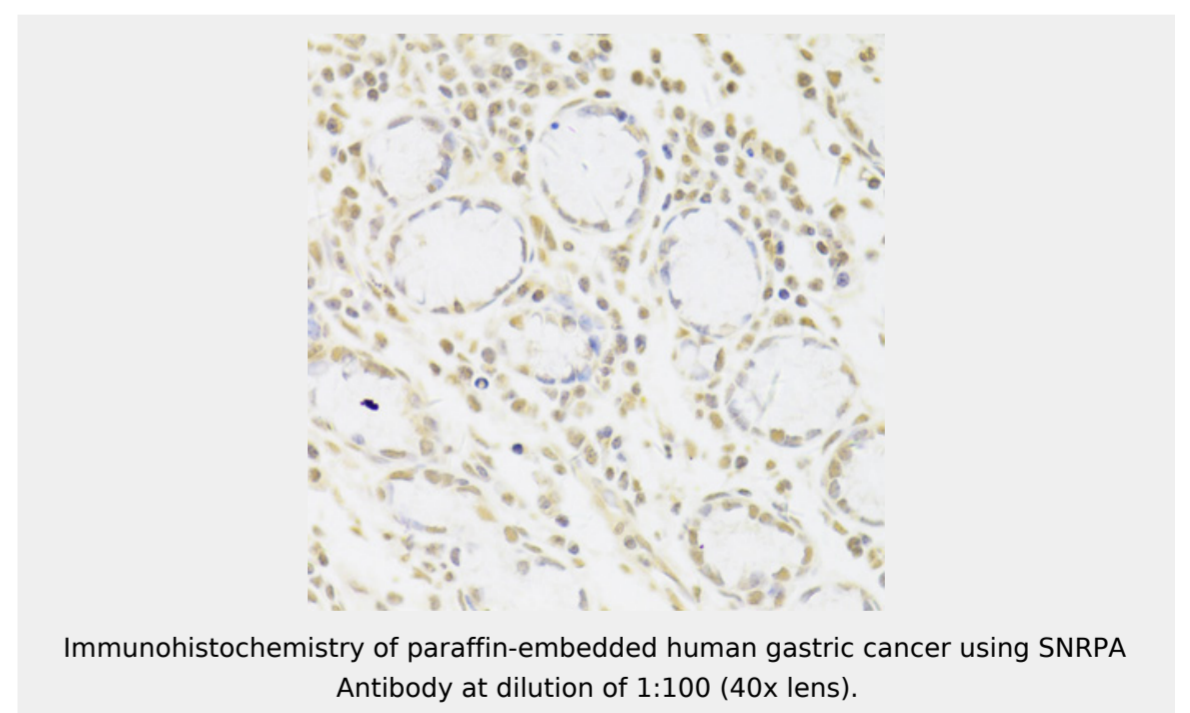
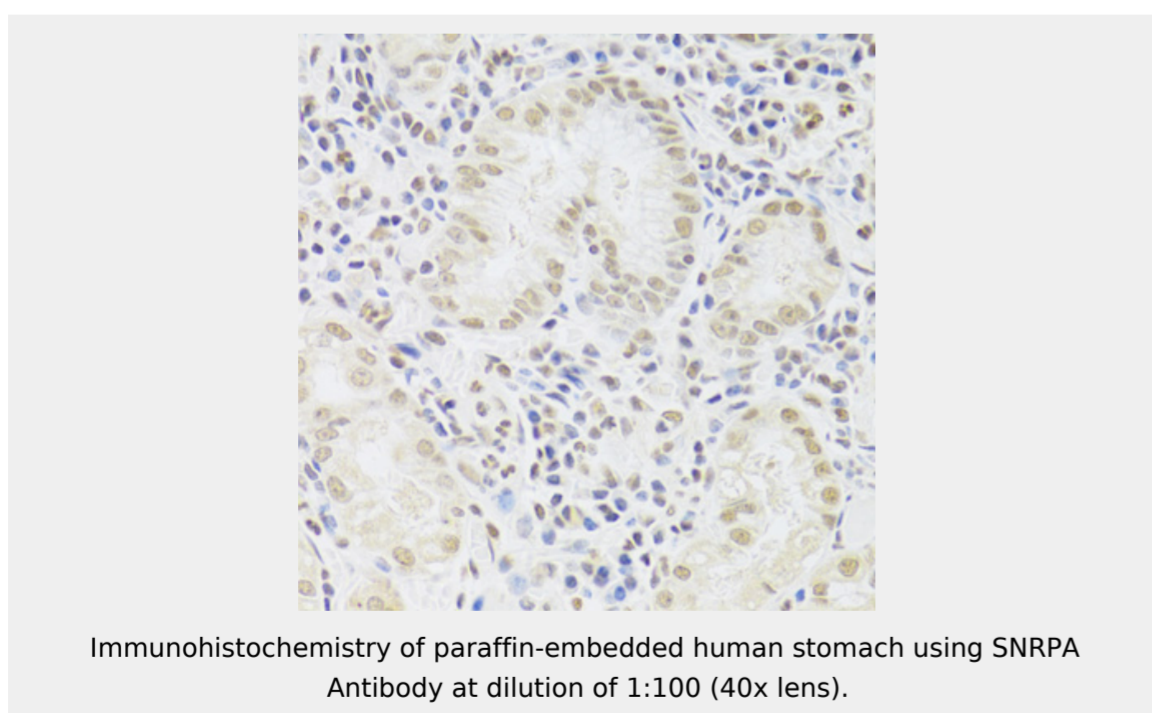
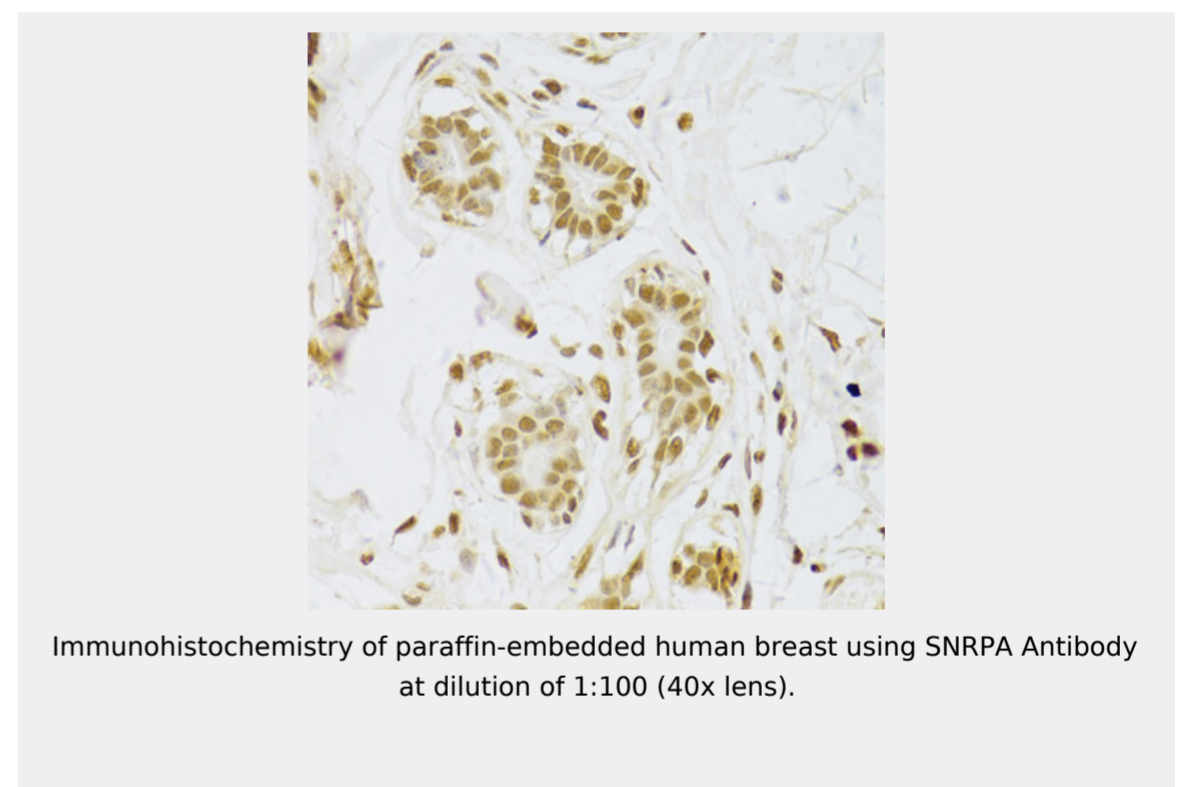
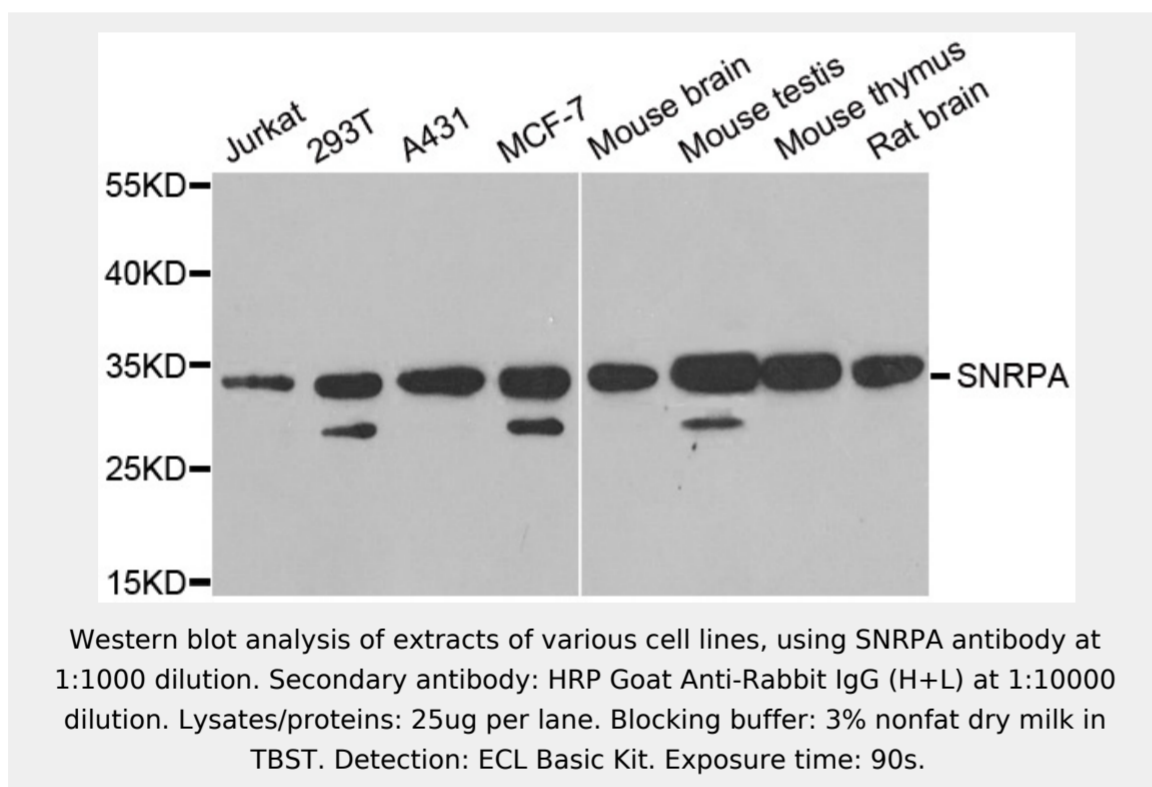
SNRPA antibody; U1 small nuclear ribonucleoprotein A antibody; U1 snRNP A antibody; U1-A antibody; U1A antibody; SNRPA antibody

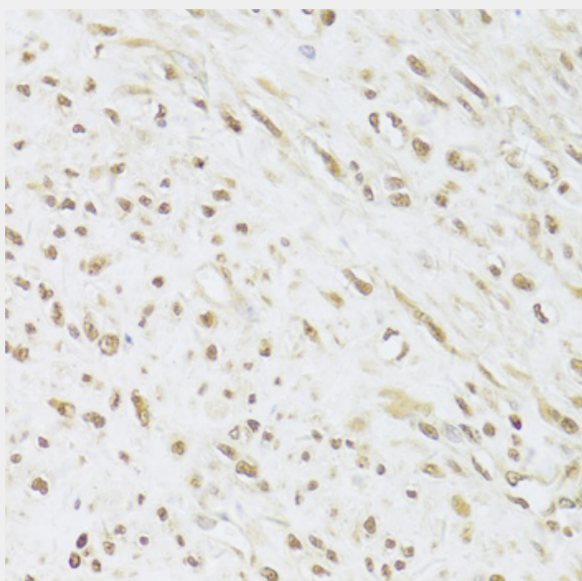
SwissProt:

P09012

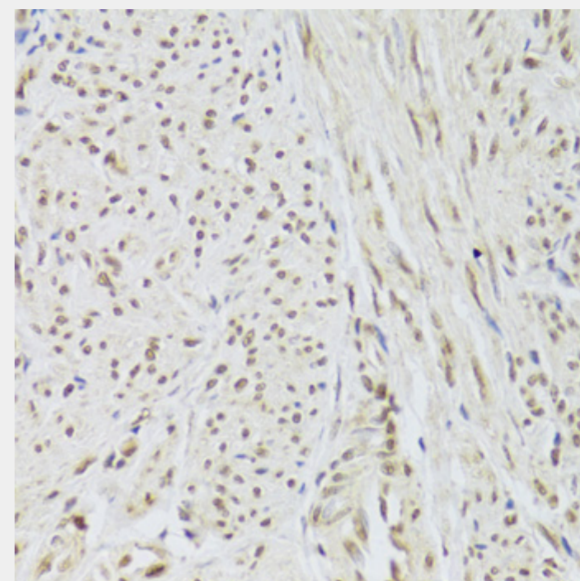
Product Description

The protein encoded by this gene associates with stem loop II of the U1 small nuclear ribonucleoprotein, which binds the 5' splice site of precursor mRNAs and is required for splicing. The encoded protein autoregulates itself by polyadenylation inhibition of its own pre-mRNA via dimerization and has been implicated in the coupling of splicing and polyadenylation.

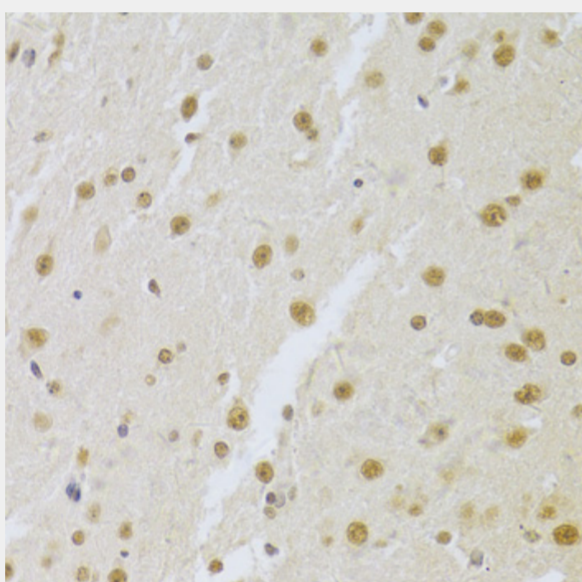




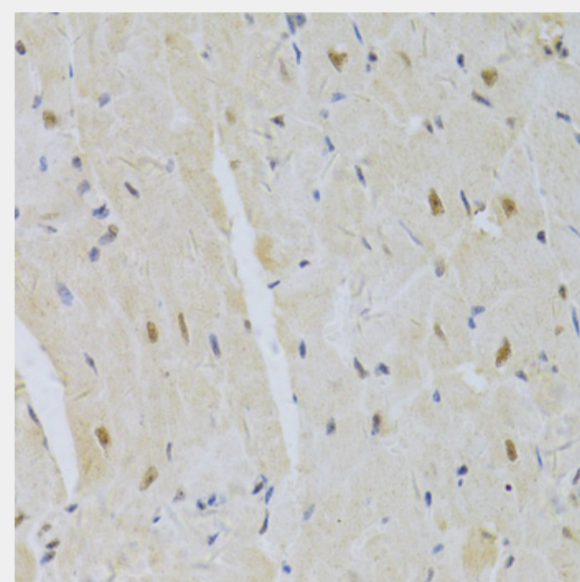
Immunohistochemistry of paraffin-embedded human leiomyoma of uterus using SNRPA Antibody at dilution of 1:100 (40x lens).



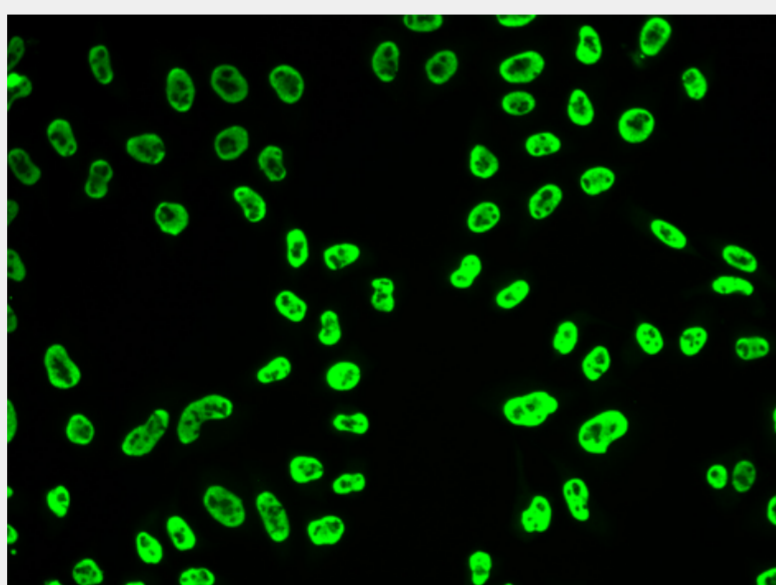
Immunohistochemistry of paraffin-embedded human adenomyosis using SNRPA Antibody at dilution of 1:100 (40x lens).



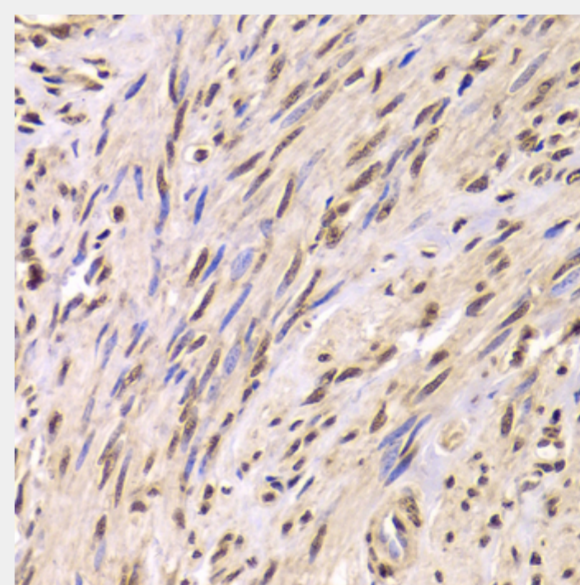
Immunohistochemistry of paraffin-embedded mouse brain using SNRPA Antibody at dilution of 1:100 (40x lens).



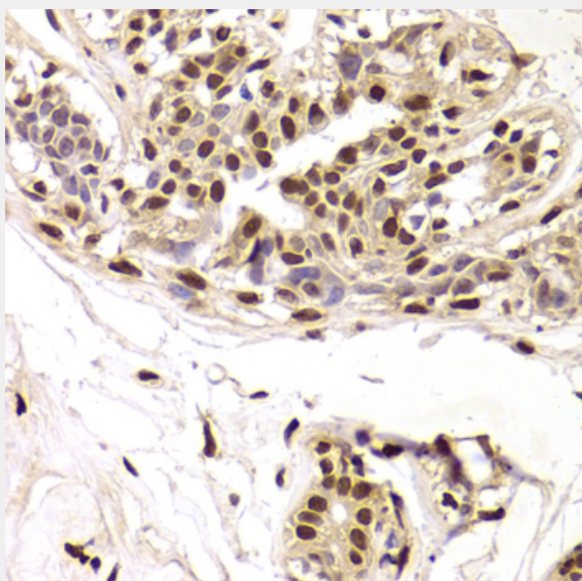
Immunohistochemistry of paraffin-embedded mouse heart using SNRPA Antibody at dilution of 1:100 (40x lens).



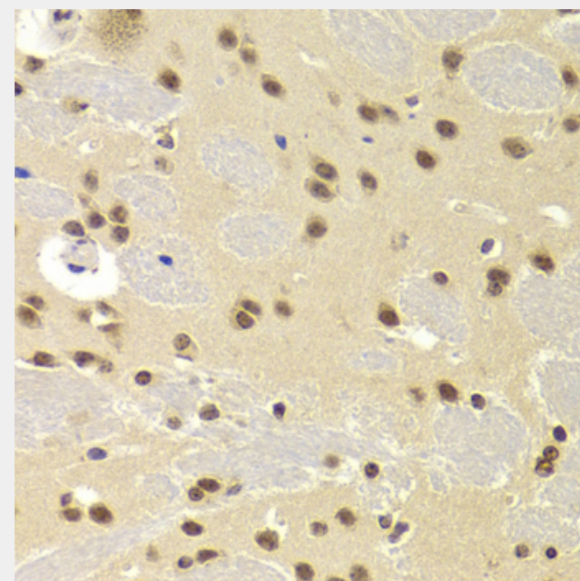
Immunofluorescence analysis of HeLa cells using SNRPA antibody.



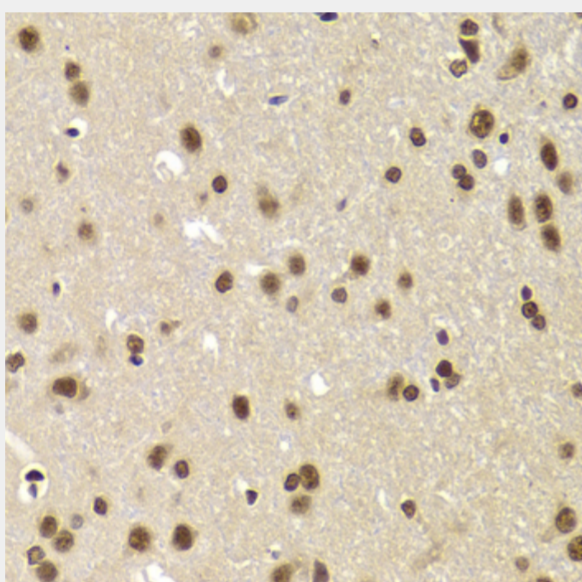
Immunohistochemistry of paraffin-embedded human adenomyosis using SNRPA Antibody at dilution of 1:100 (40x lens).



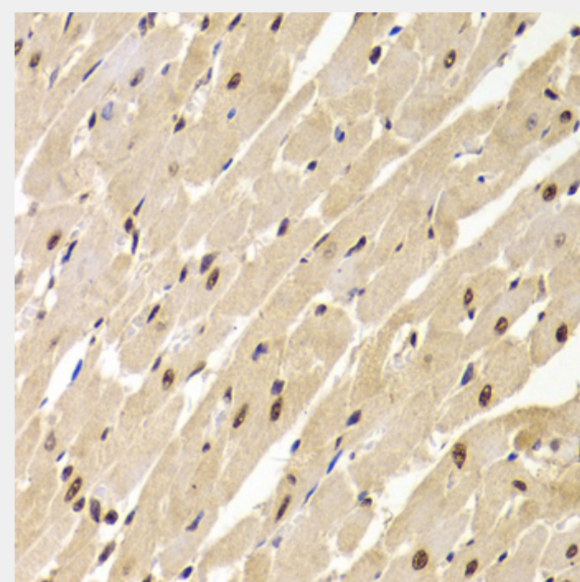
Immunohistochemistry of paraffin-embedded human breast using SNRPA Antibody at dilution of 1:100 (40x lens).



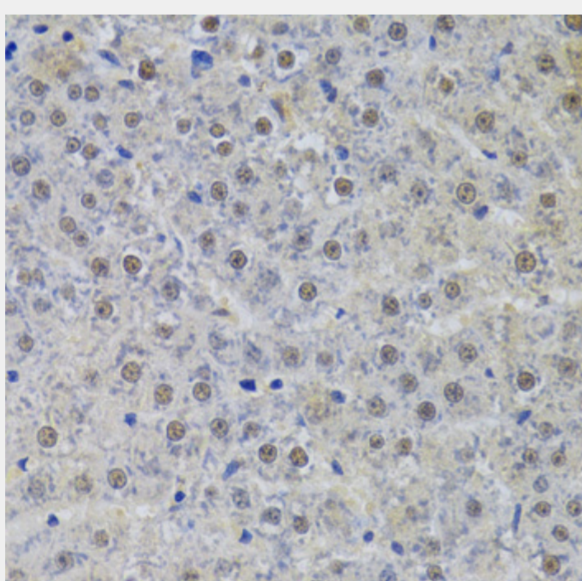
Immunohistochemistry of paraffin-embedded mouse brain using SNRPA Antibody at dilution of 1:100 (40x lens).



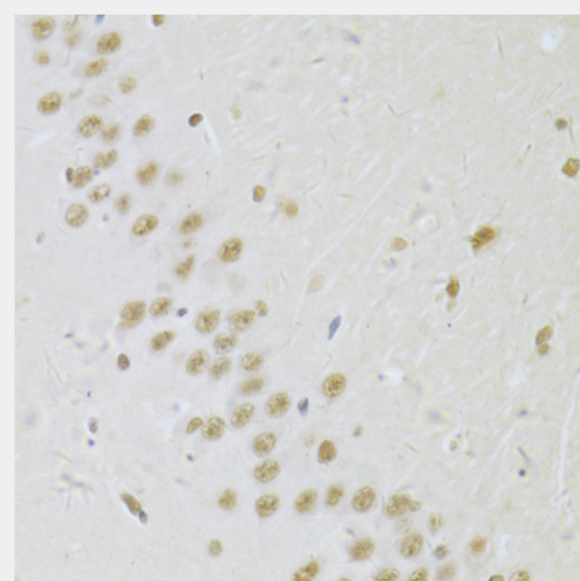
Immunohistochemistry of paraffin-embedded rat brain using SNRPA Antibody at dilution of 1:100 (40x lens).



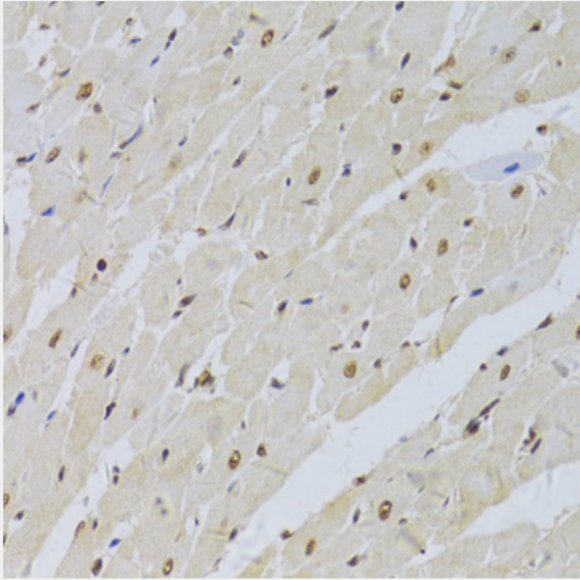
Immunohistochemistry of paraffin-embedded rat heart using SNRPA Antibody at dilution of 1:100 (40x lens).



Immunohistochemistry of paraffin-embedded rat liver using SNRPA Antibody at dilution of 1:100 (40x lens).



Immunohistochemistry of paraffin-embedded rat brain using SNRPA Antibody at dilution of 1:100 (40x lens).



Immunohistochemistry of paraffin-embedded rat heart using SNRPA Antibody at dilution of 1:100 (40x lens).

All products are for RESEARCH USE ONLY. Not for diagnostic & therapeutic purposes!