

# Anti RCC1 Antibody

Catalog No: tcsa19694



## Available Sizes

---

**Size:** 100μl



## Specifications

---

**Application:**

WB, IHC

**Species Reactivity:**

Human, Mouse, Rat

**Host Species:**

Rabbit

**Immunogen / Amino acids:**

Recombinant protein of human RCC1

**Conjugation:**

Unconjugated

**Clonality:**

Polyclonal

**Isotype:**

IgG

**Form:**

Liquid

**Storage Buffer:**

PBS with 0.02% sodium azide, 50% glycerol, pH7.3.

**Recommended Dilution:**

WB 1:1000 - 1:2000

IHC 1:50 - 1:200

**Storage Instruction:**

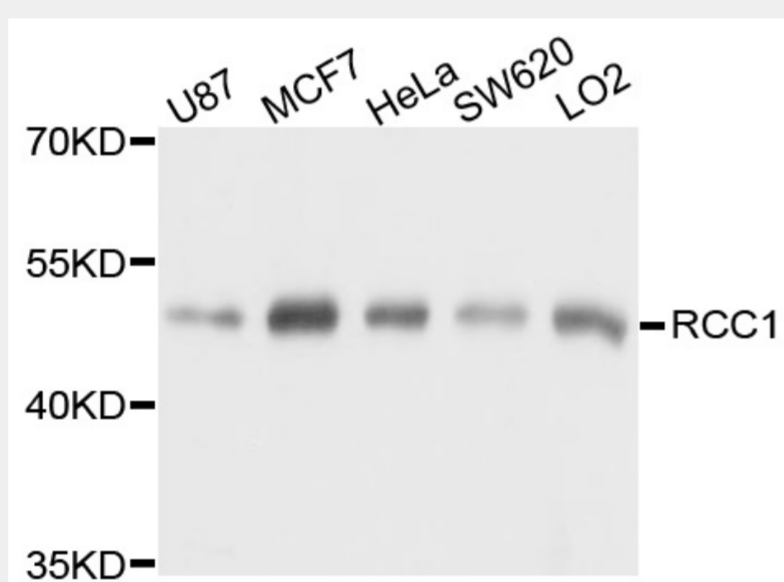
Store at -20C. Avoid freeze / thaw cycles.

**Alternative Names:**

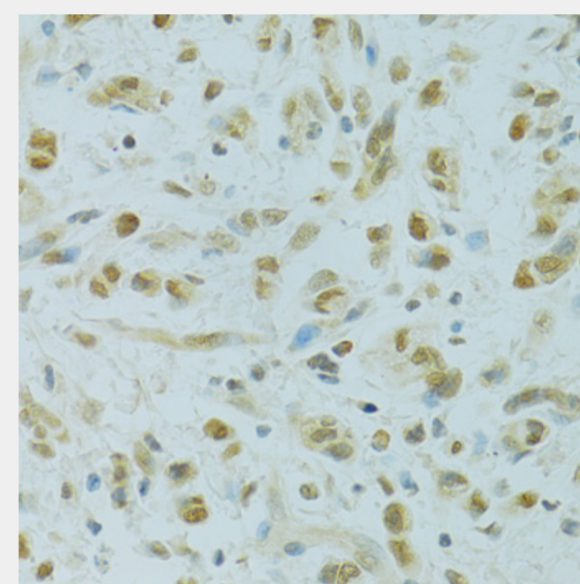
RCC1 antibody; Regulator of chromosome condensation antibody; Cell cycle regulatory protein antibody; Chromosome condensation protein 1 antibody; RCC1 antibody; CHC1 antibody

**SwissProt:**

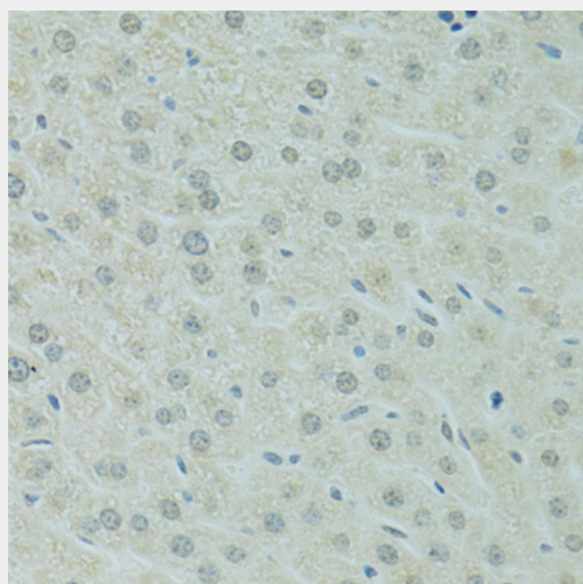
P18754



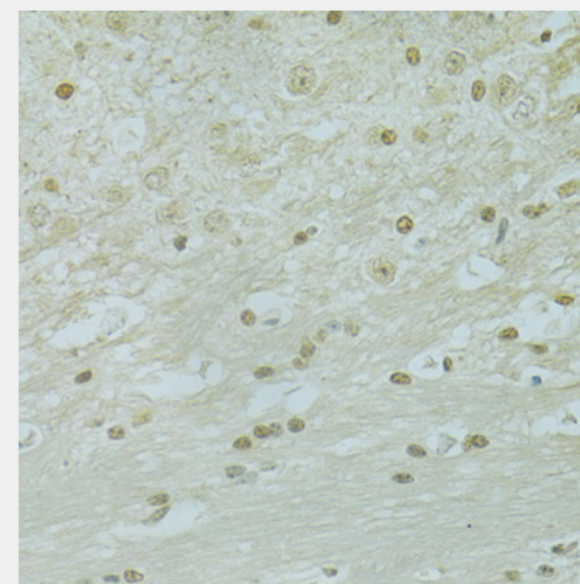
Western blot analysis of extracts of various cell lines, using RCC1 antibody at 1:1000 dilution. Secondary antibody: HRP Goat Anti-Rabbit IgG (H+L) at 1:10000 dilution. Lysates/proteins: 25ug per lane. Blocking buffer: 3% nonfat dry milk in TBST. Detection: ECL Basic Kit. Exposure time: 5s.



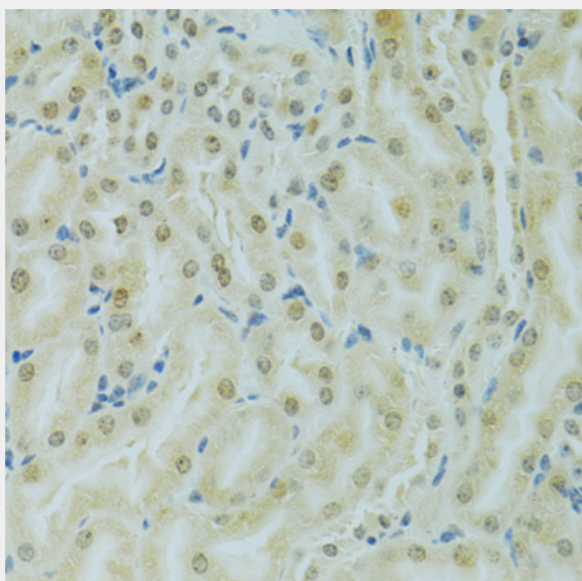
Immunohistochemistry of paraffin-embedded human gastric cancer using RCC1 antibody at dilution of 1:100 (40x lens).



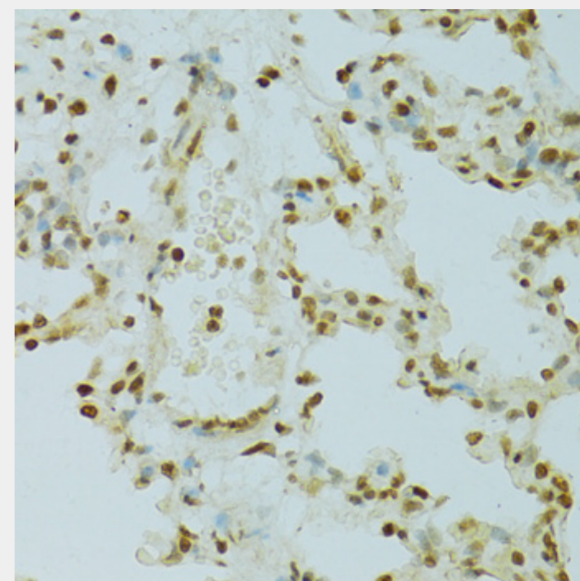
Immunohistochemistry of paraffin-embedded mouse liver using RCC1 antibody at dilution of 1:100 (40x lens).



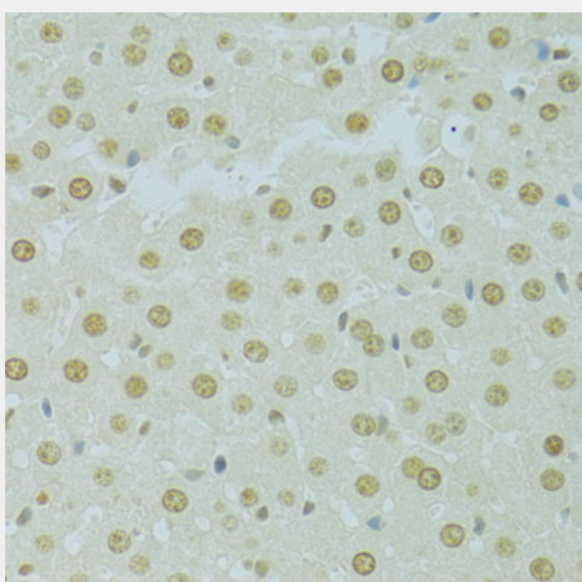
Immunohistochemistry of paraffin-embedded mouse brain using RCC1 antibody at dilution of 1:100 (40x lens).



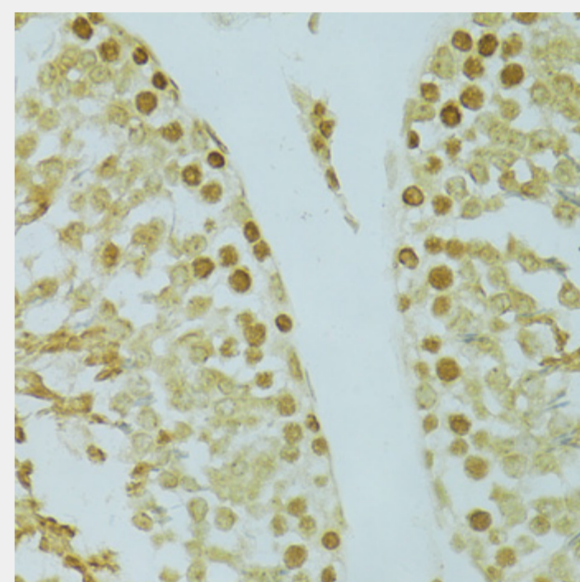
Immunohistochemistry of paraffin-embedded mouse kidney using RCC1 antibody at dilution of 1:100 (40x lens).



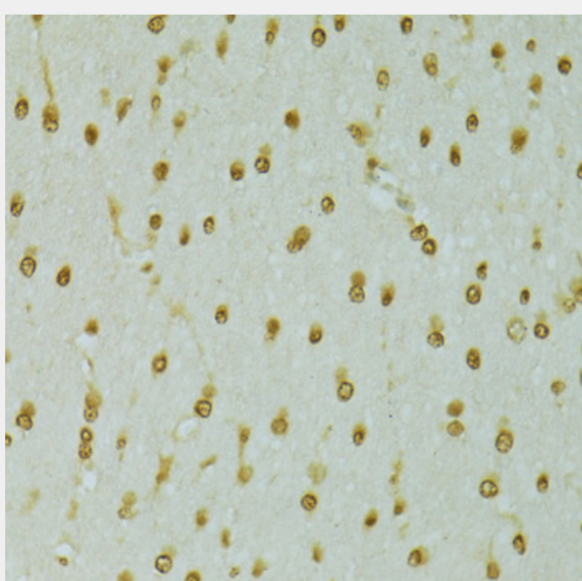
Immunohistochemistry of paraffin-embedded rat lung using RCC1 antibody at dilution of 1:100 (40x lens).



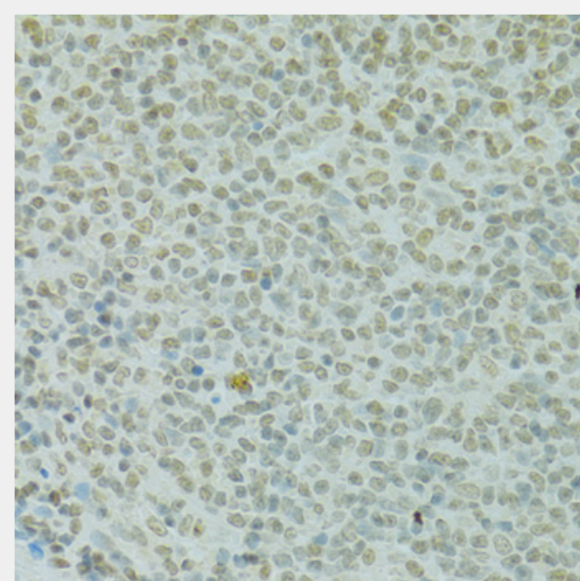
Immunohistochemistry of paraffin-embedded rat liver using RCC1 antibody at dilution of 1:100 (40x lens).



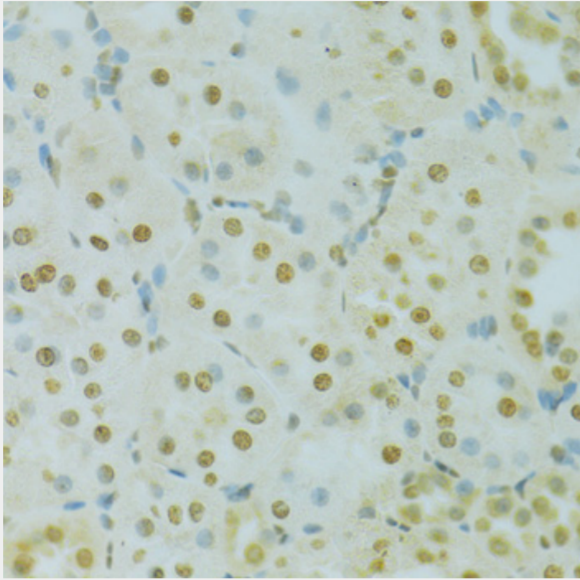
Immunohistochemistry of paraffin-embedded rat testis using RCC1 antibody at dilution of 1:100 (40x lens).



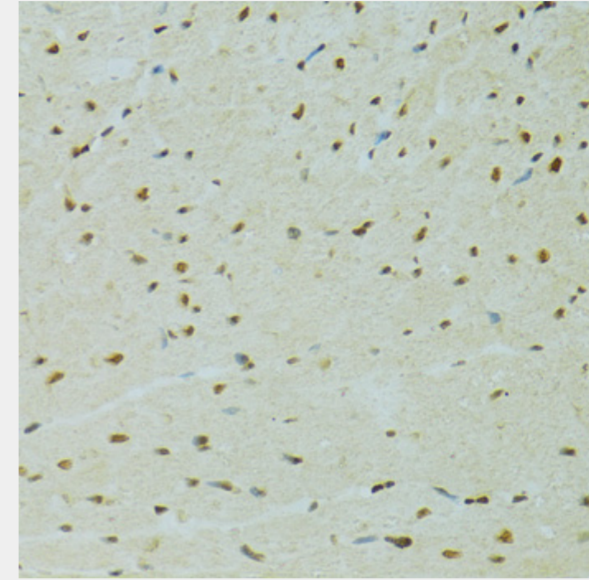
Immunohistochemistry of paraffin-embedded rat brain using RCC1 antibody at dilution of 1:100 (40x lens).



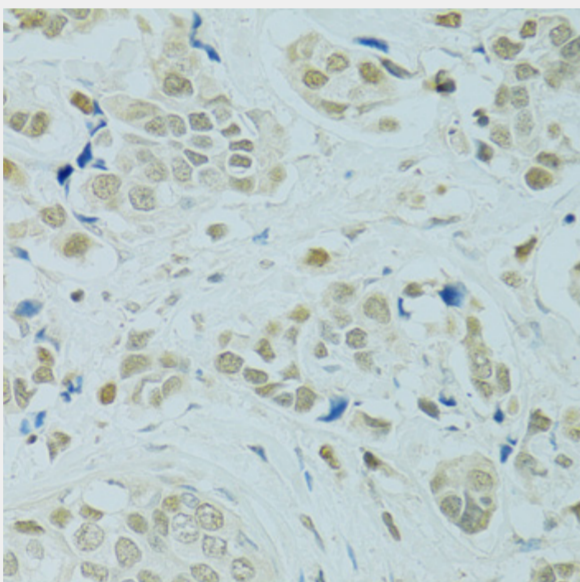
Immunohistochemistry of paraffin-embedded rat spleen using RCC1 antibody at dilution of 1:100 (40x lens).



Immunohistochemistry of paraffin-embedded rat kidney using RCC1 antibody at dilution of 1:100 (40x lens).



Immunohistochemistry of paraffin-embedded rat heart using RCC1 antibody at dilution of 1:100 (40x lens).



Immunohistochemistry of paraffin-embedded human breast cancer using RCC1 antibody at dilution of 1:100 (40x lens).

All products are for RESEARCH USE ONLY. Not for diagnostic & therapeutic purposes!