

# Anti XRCC5 Antibody

Catalog No: tcsa19686



## Available Sizes

**Size:** 100μl



## Specifications

**Application:**

WB, IHC, IF, IP

**Species Reactivity:**

Human

**Host Species:**

Rabbit

**Immunogen / Amino acids:**

Recombinant protein of human XRCC5

**Conjugation:**

Unconjugated

**Clonality:**

Polyclonal

**Isotype:**

IgG

**Form:**

Liquid

**Storage Buffer:**

PBS with 0.02% sodium azide, 50% glycerol, pH7.3.

**Recommended Dilution:**

WB 1:500 - 1:2000

IHC 1:100 - 1:200

IF 1:20 - 1:100

IP 1:50 - 1:200

#### Storage Instruction:

Store at -20C. Avoid freeze / thaw cycles.

#### Alternative Names:

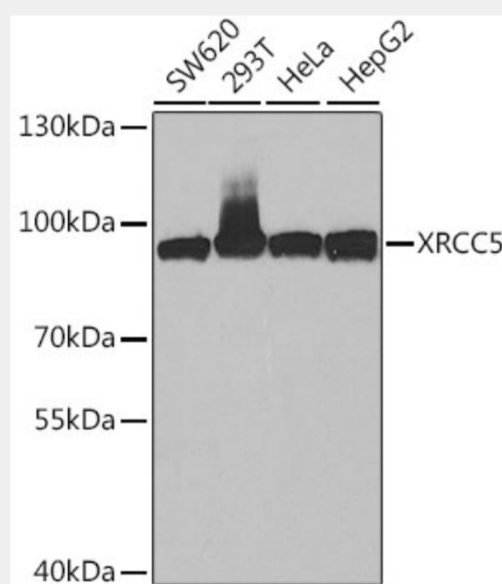
XRCC5 antibody; X-ray repair cross-complementing protein 5 antibody; XRCC5 antibody; G22P2 antibody

#### SwissProt:

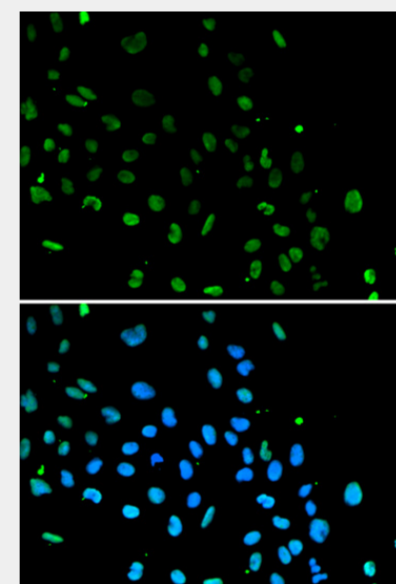
P13010

### Product Description

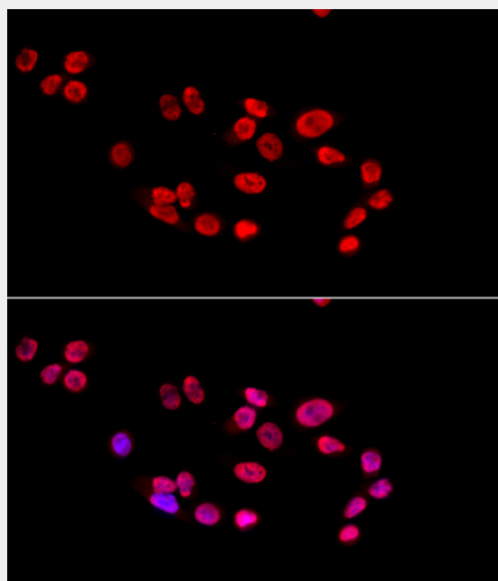
The protein encoded by this gene is the 80-kilodalton subunit of the Ku heterodimer protein which is also known as ATP-dependant DNA helicase II or DNA repair protein XRCC5. Ku is the DNA-binding component of the DNA-dependent protein kinase, and it functions together with the DNA ligase IV-XRCC4 complex in the repair of DNA double-strand break by non-homologous end joining and the completion of V(D)J recombination events. This gene functionally complements Chinese hamster xrs-6, a mutant defective in DNA double-strand break repair and in ability to undergo V(D)J recombination. A rare microsatellite polymorphism in this gene is associated with cancer in patients of varying radiosensitivity.



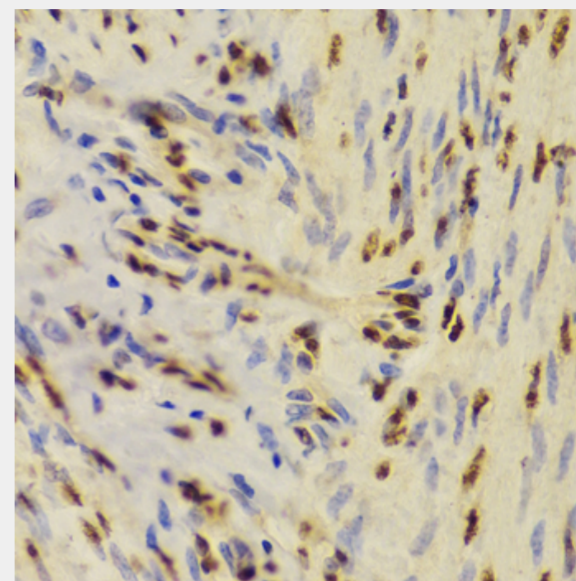
Western blot analysis of extracts of various cell lines, using XRCC5 antibody at 1:1000 dilution. Secondary antibody: HRP Goat Anti-Rabbit IgG (H+L) at 1:10000 dilution. Lysates/proteins: 25ug per lane. Blocking buffer: 3% nonfat dry milk in TBST. Detection: ECL Basic Kit. Exposure time: 60s.



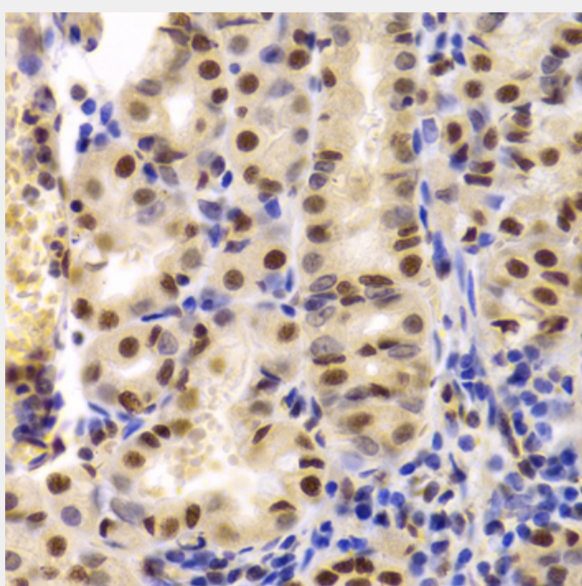
Immunofluorescence analysis of A549 cells using XRCC5 antibody. Blue: DAPI for nuclear staining.



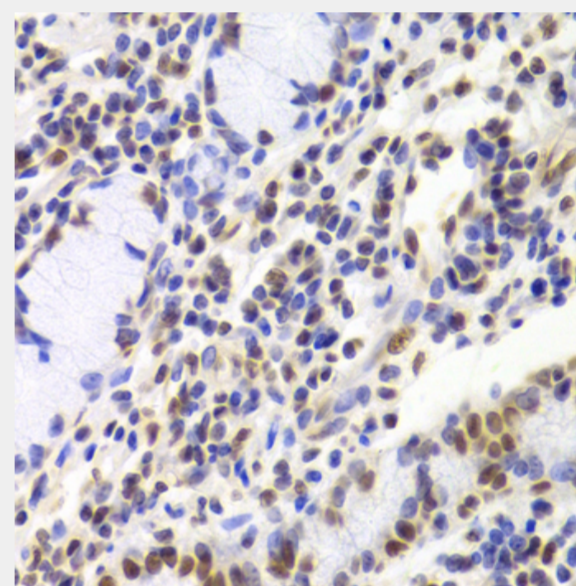
Immunofluorescence analysis of HeLa cells using XRCC5 antibody at dilution of 1:100 (40x lens). Blue: DAPI for nuclear staining.



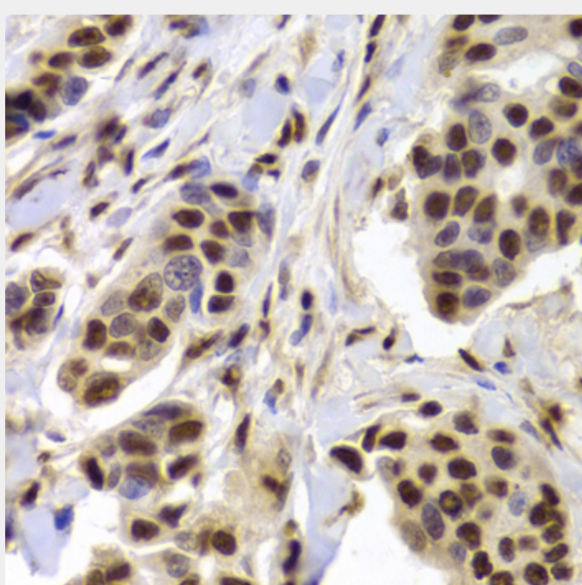
Immunohistochemistry of paraffin-embedded human adenomyosis using XRCC5 Antibody at dilution of 1:100 (40x lens).



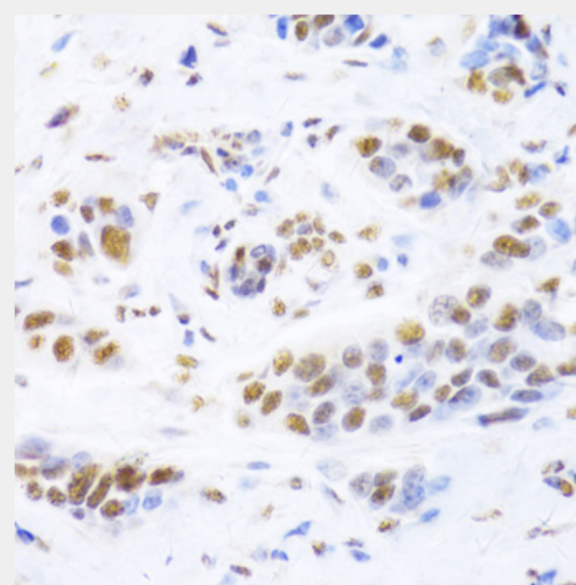
Immunohistochemistry of paraffin-embedded human stomach using XRCC5 Antibody at dilution of 1:100 (40x lens).



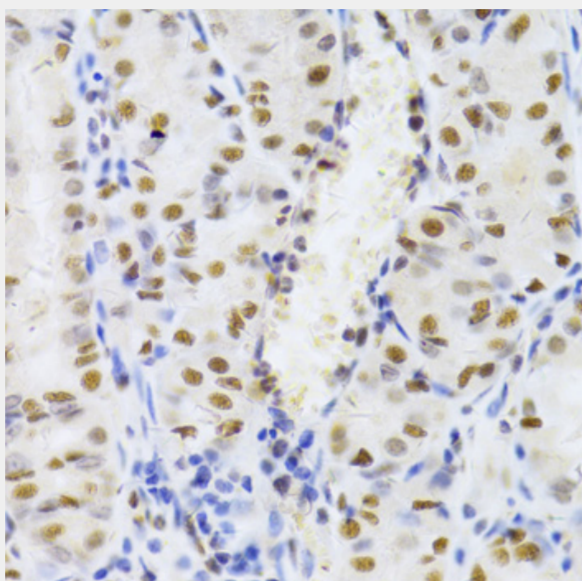
Immunohistochemistry of paraffin-embedded human gastric cancer using XRCC5 Antibody at dilution of 1:100 (40x lens).



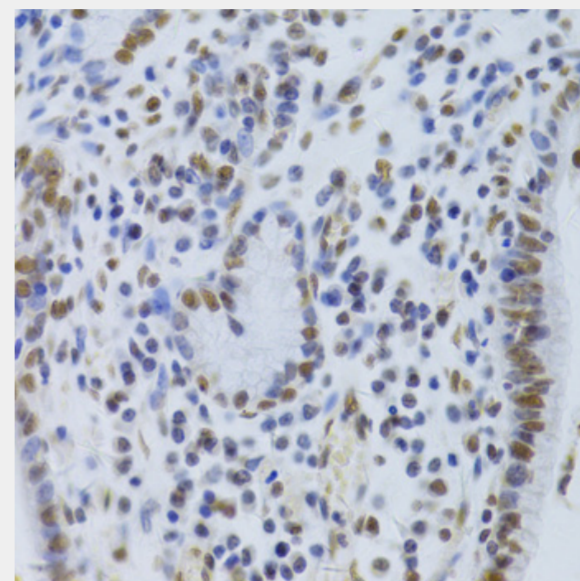
Immunohistochemistry of paraffin-embedded human breast cancer using XRCC5 Antibody at dilution of 1:100 (40x lens).



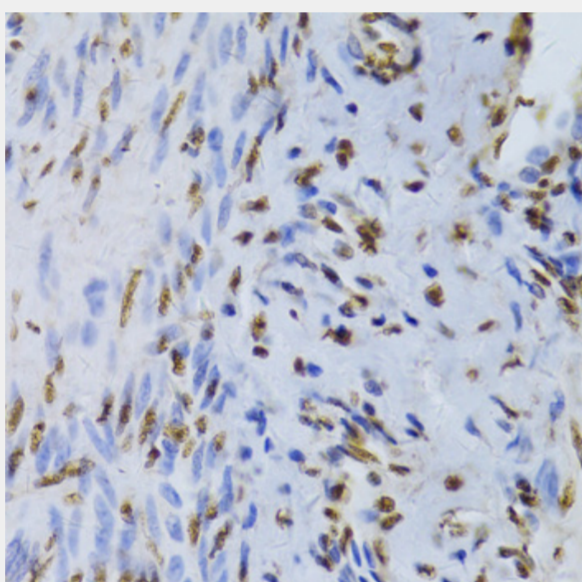
Immunohistochemistry of paraffin-embedded human breast cancer using XRCC5 Antibody at dilution of 1:100 (40x lens).



Immunohistochemistry of paraffin-embedded human stomach using XRCC5 Antibody at dilution of 1:100 (40x lens).



Immunohistochemistry of paraffin-embedded human gastric cancer using XRCC5 Antibody at dilution of 1:100 (40x lens).



Immunohistochemistry of paraffin-embedded human adenomyosis using XRCC5 Antibody at dilution of 1:100 (40x lens).

All products are for RESEARCH USE ONLY. Not for diagnostic & therapeutic purposes!